

Recombinant human PD1 protein (Active) ab174035

2 References [画像数 10](#)

製品の詳細

製品名	Recombinant human PD1 protein (Active)	
生理活性	Measured by its binding ability in a functional ELISA. Immobilized PD1 at 10 µg/ml (100 µl/well) can bind recombinant Human B7-H1 Fc chimera with a linear range of 0.005- 0.4 µg/ml.	
精製度	> 95 % SDS-PAGE. >90% as determined by SEC-HPLC. Purified by Immobilized metal affinity chromatography.	
エンドキシン・レベル	< 1.000 Eu/µg	
発現系	HEK 293 cells	
アクセッション番号	Q15116	
タンパク質長	Protein fragment	
Animal free	No	
由来	Recombinant	
生物種	Human	
配列	LDSPDRPWNPTFSPALLVVTEGDNATFTCSFSNTSEFVLN WYRMSPSN QTDKLAAPEDRSQPGQDCRFRVTQLPNGRDFHMSVVRARRN DSGTYLCG AISLAPKAQIKESLRAELRVTERRAEVPTAHPSPSRPAGQF Q	
予測される分子量	17 kDa including tags	
領域	25 to 167	
タグ	His tag C-Terminus	
配列の追加情報	(NP_005009.2)	

特性

Our **Abpromise guarantee** covers the use of **ab174035** in the following tested applications.

The application notes include recommended starting dilutions; optimal dilutions/concentrations should be determined by the end user.

アプリケーション	HPLC
	SDS-PAGE

Functional Studies

ELISA

製品の状態

Lyophilized

備考

For long term storage, store at lyophilized state at -20°C or lower. After reconstitution, store under sterile conditions for 3 months at -70°C or 12 months at 4-8°C at lyophilized state. Avoid repeated freeze-thaw cycles.

前処理および保存

保存方法および安定性

Shipped at 4°C. Store at 4°C prior to reconstitution. Store at -20°C or -80°C. Please see notes section.

pH: 7.40

Constituents: PBS, 5% Trehalose

The formulation is lot specific. Please contact our Technical Support team for details

This product is an active protein and may elicit a biological response in vivo, handle with caution.

再構成

This information is lot specific. Please contact our Technical Support team for details

関連情報

機能

Possible cell death inducer, in association with other factors.

関連疾患

Genetic variation in PDCD1 is associated with susceptibility to systemic lupus erythematosus type 2 (SLEB2) [MIM:605218]. Systemic lupus erythematosus is a chronic, inflammatory and often febrile multisystemic disorder of connective tissue. It affects principally the skin, joints, kidneys and serosal membranes. It is thought to represent a failure of the regulatory mechanisms of the autoimmune system.

配列類似性

Contains 1 Ig-like V-type (immunoglobulin-like) domain.

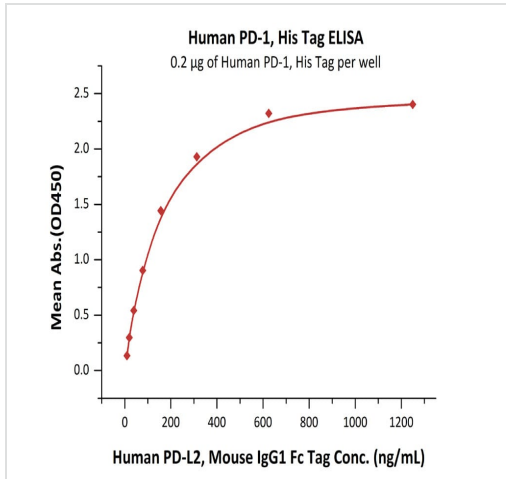
発生段階

Induced at programmed cell death.

細胞内局在

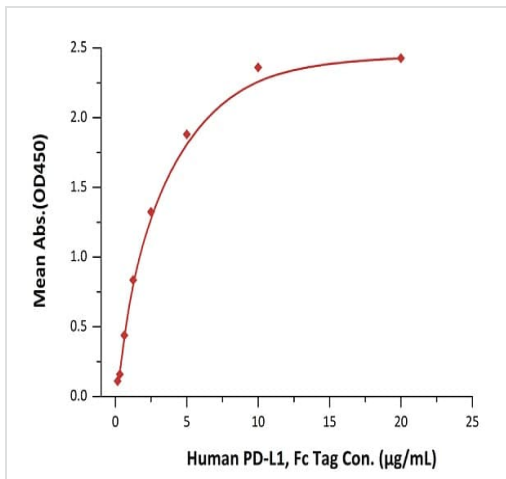
Membrane.

画像



Immobilized ab174035 at 2 µg/mL (100 µL/well) can bind Human PD-L2, Mouse IgG1 Fc Tag with a linear range of 10-156 ng/mL.

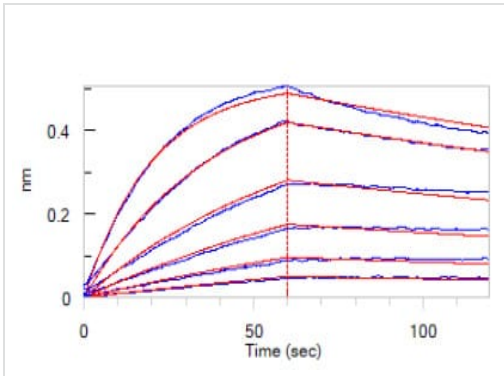
ELISA - Recombinant human PD1 protein (Active)
(ab174035)



Immobilized ab174035 at 0.2µg/mL (100 µL/well) binds Human PD-L1, Fc Tag.

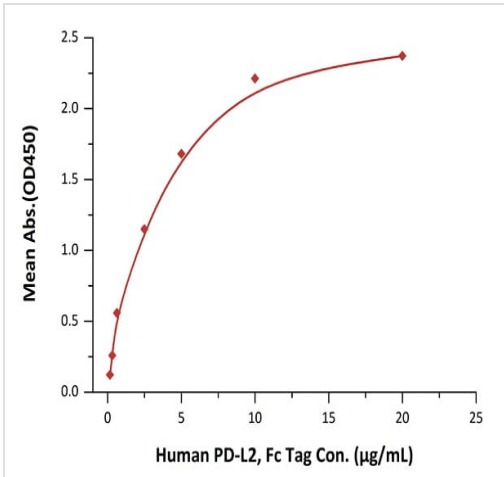
Linear range of 0.31-1.25 µg/mL (QC tested).

Functional Studies - Recombinant human PD1 protein (ab174035)



Functional Studies - Recombinant human PD1 protein (Active) (ab174035)

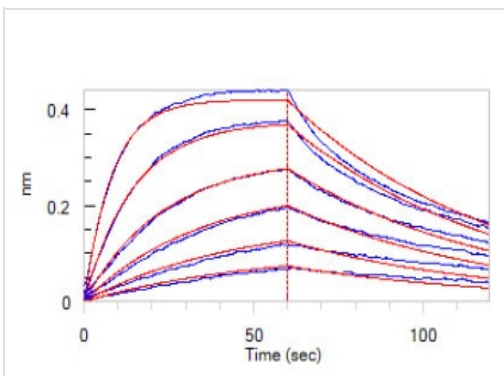
Loaded Human PD-1 (His Tag) (HPLC verified) on HIS1K Biosensor can bind Human PD-L2 (Fc Tag) (HPLC verified) with an affinity constant of 16.3 nM as determined in bli assay (ForteBio Octet Red96e) (QC tested).



Functional Studies - Recombinant human PD1 protein (ab174035)

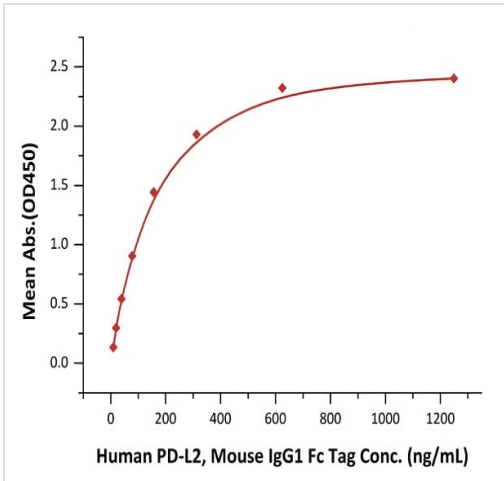
Immobilized ab174035 at 0.2 µg/mL (100 µl/well) binds Human PD-L2, Fc Tag.

Linear range of 0.16-2.5 µg/mL (QC tested).



Functional Studies - Recombinant human PD1 protein (Active) (ab174035)

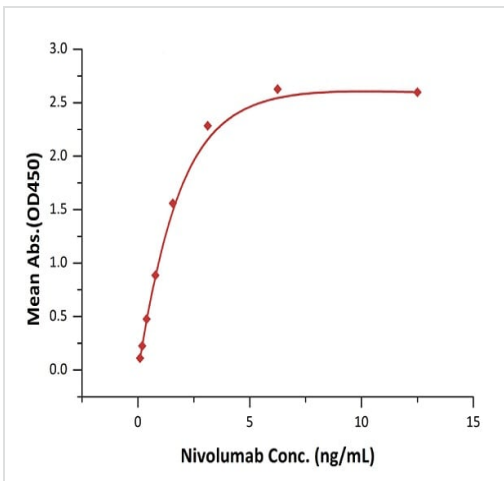
Loaded Human PD-1 (His Tag) (HPLC verified) on HIS1K Biosensor can bind Human PD-L1 (Fc Tag) (HPLC verified) with an affinity constant of 38.9 nM as determined in bli assay (ForteBio Octet Red96e) (QC tested).



Immobilized ab174035 at 2 µg/mL (100 µL/well) binds Human PD-L2, Mouse IgG1 Fc Tag.

Linear range of 10-156 ng/mL (Routinely tested).

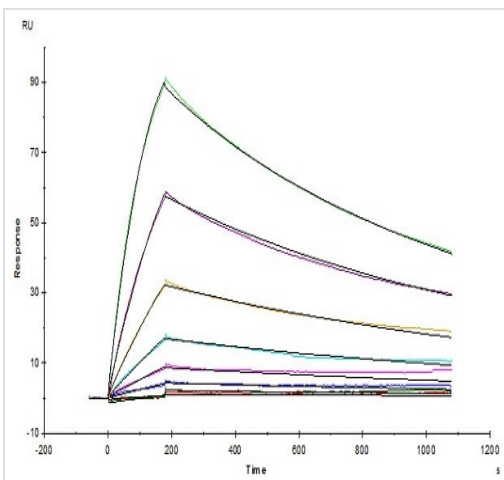
Functional Studies - Recombinant human PD1 protein (ab174035)



Immobilized ab174035 at 2 µg/mL (100 µL/well) binds Nivolumab.

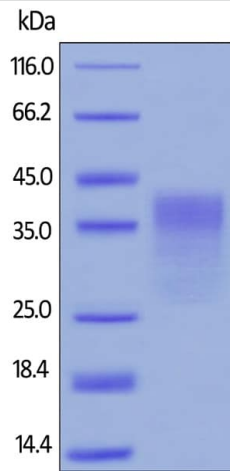
Linear range of 0.1-3 ng/mL (Routinely tested).

Functional Studies - Recombinant human PD1 protein (ab174035)



Opdivo(Nivolumab), captured on CM5 chip via anti-human IgG Fc antibodies surface, binds ab174035 with an affinity constant of 4.94 nM, as determined in an SPR assay (Biacore T200) (Routinely tested).

Functional Studies - Recombinant human PD1 protein (ab174035)

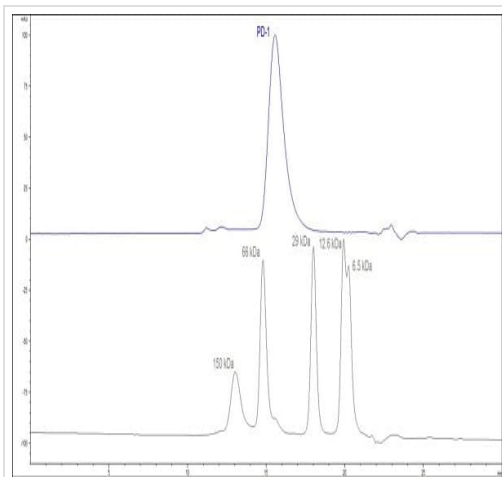


SDS-PAGE - Recombinant human PD1 protein
(ab174035)

Reduced ab174035 on SDS-PAGE, stained overnight with Coomassie Blue.

The purity of the protein is greater than 95%.

The protein migrates as 31-44kDa under reducing conditions, due to glycosylation.



HPLC - Recombinant human PD1 protein
(ab174035)

The purity of ab174035 was greater than 90%, as determined by SEC-HPLC.

Please note: All products are "FOR RESEARCH USE ONLY. NOT FOR USE IN DIAGNOSTIC PROCEDURES"

Our Abpromise to you: Quality guaranteed and expert technical support

- Replacement or refund for products not performing as stated on the datasheet
- Valid for 12 months from date of delivery
- Response to your inquiry within 24 hours
- We provide support in Chinese, English, French, German, Japanese and Spanish
- Extensive multi-media technical resources to help you
- We investigate all quality concerns to ensure our products perform to the highest standards

If the product does not perform as described on this datasheet, we will offer a refund or replacement. For full details of the Abpromise, please visit <https://www.abcam.co.jp/abpromise> or contact our technical team.

Terms and conditions

- Guarantee only valid for products bought direct from Abcam or one of our authorized distributors