

### Recombinant human PD-L1 protein (Active) ab280943

画像数 5

#### 製品の詳細

製品名	Recombinant human PD-L1 protein (Active)
生理活性	Fully biologically active measured by its ability to inhibit anti-CD3 and anti-CD8 antibody induced T-cell expansion. ED <sub>50</sub> for this effect is ≤500 ng/mL with a specific activity of 0.2 x 10 <sup>4</sup> units/mg.
精製度	≥ 95 % SDS-PAGE. =95% by HPLC
エンドトキシン・レベル	≤0.005 Eu/μg
発現系	HEK 293 cells
アクセッション番号	<b><u>Q9NZQ7</u></b>
タンパク質長	Protein fragment
Animal free	Yes
キャリア・フリー	はい
由来	Recombinant
生物種	Human
配列	FTVTVPKDLY VVEYGSNMTI ECKFPVEKQL DLAALIVYWE MEDKNIIQFV HGEEDLKVQH SSYRQRARLL KDQLSLGNAA LQITDVKLQD AGVYRCMISY GGADYKRITV KVNAPYNKIN QRILVVDVPT SEHELTCQAE GYPKAEVIWT SSDHQVLSGK TTTTNSKREE KLFNVTSTLR INTTTNEIFY CTFRRLDPEE NHTAELVIPE LPLAHPNER
予測される分子量	25 kDa
実際の分子量	25 kDa
分子量情報	Predicted MW is 25250.68 Da (+/- 10 Da by ESI-TOF). Observed MW is 25097.90 Da. M-100 due to loss of C-terminal arginine.
領域	19 to 238
配列の追加情報	N-terminal glycine.

#### 特性

Our **Abpromise guarantee** covers the use of **ab280943** in the following tested applications.

The application notes include recommended starting dilutions; optimal dilutions/concentrations should be determined by the end user.

**アプリケーション**  
Mass Spectrometry  
Sandwich ELISA  
SDS-PAGE  
HPLC  
Functional Studies

**製品の状態**  
Lyophilized

## 前処理および保存

---

**保存方法および安定性**  
Shipped at Room Temperature. Store at Room Temperature.  
pH: 7.40  
Constituents: 0.727% Dibasic monohydrogen potassium phosphate, 0.248% Monobasic dihydrogen potassium phosphate, 10.26% Trehalose

Buffer lyophilized from.

This product is an active protein and may elicit a biological response in vivo, handle with caution.

**再構成**  
Reconstitute with phosphate buffered saline. Store lyophilized form at room temperature.  
Reconstitute, aliquot and store at -80°C for 12 months or +4°C for 1 week. Avoid repeated freeze-thaw. Lyophilized contents may appear as either a translucent film or a white powder. This variance does not affect the quality of the product. Lyophilized contents may appear as either a translucent film or a white powder. This variance does not affect the quality of the product.

## 関連情報

---

**機能**  
Involved in the costimulatory signal, essential for T-cell proliferation and production of IL10 and IFNG, in an IL2-dependent and a PD1-independent manner. Interaction with PD1 inhibits T-cell proliferation and cytokine production.

**組織特異性**  
Highly expressed in the heart, skeletal muscle, placenta and lung. Weakly expressed in the thymus, spleen, kidney and liver. Expressed on activated T- and B-cells, dendritic cells, keratinocytes and monocytes.

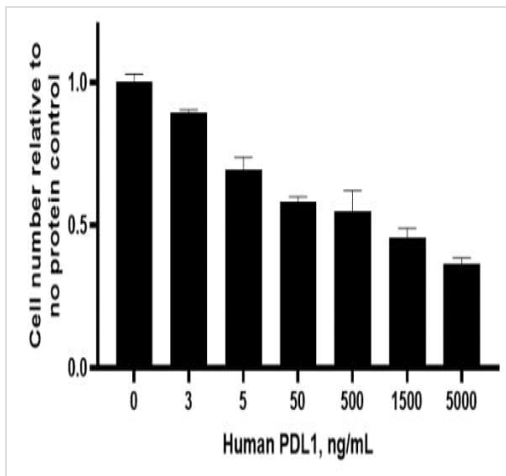
**配列類似性**  
Belongs to the immunoglobulin superfamily. BTN/MOG family.  
Contains 1 Ig-like C2-type (immunoglobulin-like) domain.  
Contains 1 Ig-like V-type (immunoglobulin-like) domain.

**細胞内局在**  
Cell membrane and Endomembrane system.

---

## 画像

---



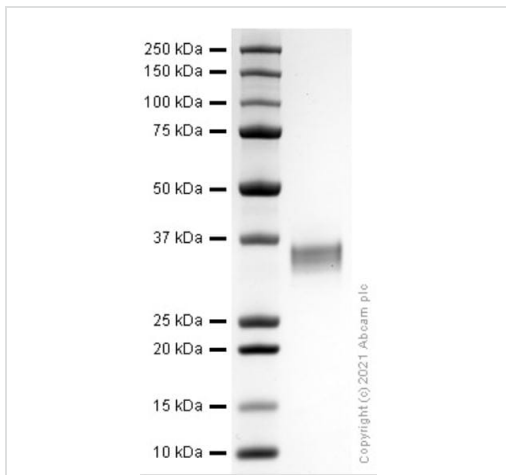
Functional Studies - Recombinant human PD-L1 protein (ab280943)

Functional analysis of an280943.

Fully biologically active measured by its ability to inhibit anti-CD3 and anti-CD8 antibody induced T-cell expansion.  $ED_{50}$  for this effect is  $\leq 500$  ng/mL with a specific activity of  $0.2 \times 10^4$  units/mg.

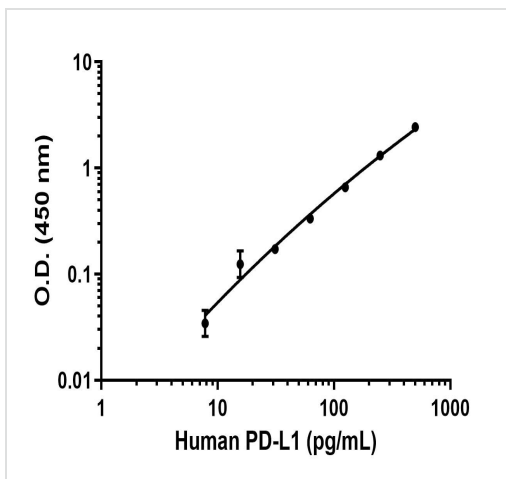
Cell based assay testing is performed on the first lot of protein only and is provided as a reference for protein activity; subsequent lots of protein must pass all biophysical quality control parameters that meet the same parameters as the first lot.

Lot: GR3381126-2



SDS-PAGE - Recombinant Human PD-L1 protein (ab280943)

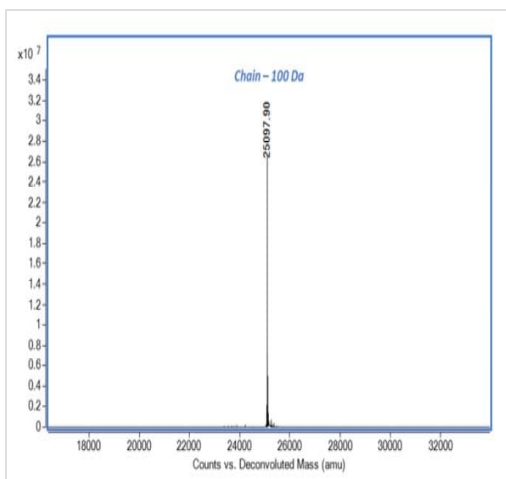
SDS-PAGE analysis of ab280943.



Sandwich ELISA - Recombinant human PD-L1 protein (Active) (ab280943)

Sandwich ELISA - Recombinant human PD-L1 protein standard curve.

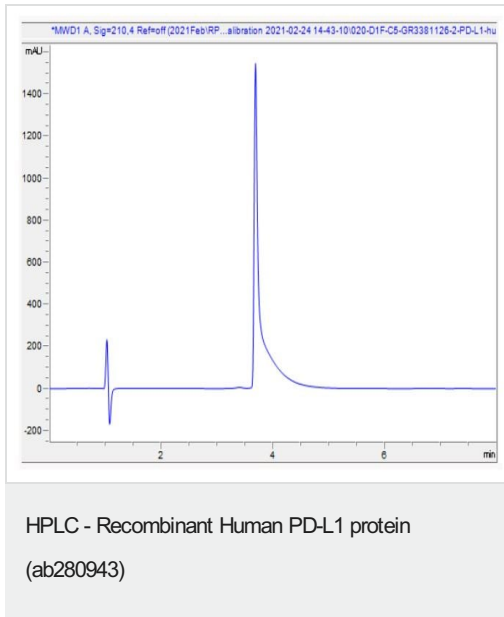
Background subtracted standard curve using Human/Monkey PD-L1 [28-8] Antibody Pair - BSA and Azide free (**ab253485**) and Recombinant human PD-L1 protein (Active) (ab280943) in sandwich ELISA. The ELISA was performed using the components of the corresponding SimpleStep® kit, which uses the same antibody pair with a different formulation and format.



Mass Spectrometry - Recombinant Human PD-L1 protein (ab280943)

Mass determination by ESI-TOF.

Predicted MW is 25250.68 Da (+/- 10 Da by ESI-TOF). Observed MW is 25097.90 Da. M-100 due to loss of C-terminal arginine.



HPLC analysis of ab280943.

**Please note:** All products are "FOR RESEARCH USE ONLY. NOT FOR USE IN DIAGNOSTIC PROCEDURES"

### Our Abpromise to you: Quality guaranteed and expert technical support

---

- Replacement or refund for products not performing as stated on the datasheet
- Valid for 12 months from date of delivery
- Response to your inquiry within 24 hours
- We provide support in Chinese, English, French, German, Japanese and Spanish
- Extensive multi-media technical resources to help you
- We investigate all quality concerns to ensure our products perform to the highest standards

If the product does not perform as described on this datasheet, we will offer a refund or replacement. For full details of the Abpromise, please visit <https://www.abcam.co.jp/abpromise> or contact our technical team.

### Terms and conditions

---

- Guarantee only valid for products bought direct from Abcam or one of our authorized distributors