

Recombinant human PD-L1 protein (Active) ab182689

画像数 4

製品の詳細

製品名	Recombinant human PD-L1 protein (Active)
生理活性	<p>Measured by its binding ability in a functional ELISA. Immobilized ab182689 at 5 µg/mL (100 µL/well) can bind Recombinant human PD1 protein (Active) (Biotin) (ab246155) with a linear range of 0.002-0.25 µg/mL.</p> <p>Measured by its binding ability in a BLI assay. Loaded Anti-Human PD-L1 MAb (Human IgG1) on AHC Biosensor, can bind ab182689 with an affinity constant of 0.891 nM as determined.</p> <p>Measured by its binding ability in a BLI assay. Loaded Recombinant human PD1 protein (Fc Chimera Active) (ab221398) on Protein A Biosensor, can bind ab182689 with an affinity constant of 2.2 µM as determined.</p>
精製度	> 95 % SDS-PAGE.
エンドトキシン・レベル	< 1.000 Eu/µg
発現系	HEK 293 cells
アクセッション番号	Q9NZQ7
タンパク質長	Protein fragment
Animal free	No
由来	Recombinant
生物種	Human
配列	<pre>FTVTVPKDLVVEYGSNMTIECKFPVEKQLDLAALIVYWEME DKNIIQFV HGEEDLKVQHSSYRQRARLLKDKQLSLGNAALQITDVKLQDAG VYRCMISY GGADYKRITVKVNAPYKNINQRILVVDPVVTSEHELTCQAEGY PKAEVIWT SSDHQVLSGKTTTTNSKREEKLFNVTSTLRINTTTNEIFYCT FRRLDPEE NHTAELVIPELPLAHPNER</pre>
予測される分子量	28 kDa including tags
領域	19 to 238
タグ	StrepII tag C-Terminus
配列の追加情報	Extracellular domain. C terminal Strep II-tag. NP_054862.1.

特性

Our **Abpromise guarantee** covers the use of **ab182689** in the following tested applications.

The application notes include recommended starting dilutions; optimal dilutions/concentrations should be determined by the end user.

アプリケーション	SDS-PAGE Functional Studies ELISA
製品の状態	Lyophilized
備考	Reconstitute with sterile deionized water to a concentration of 200 µg/ml.

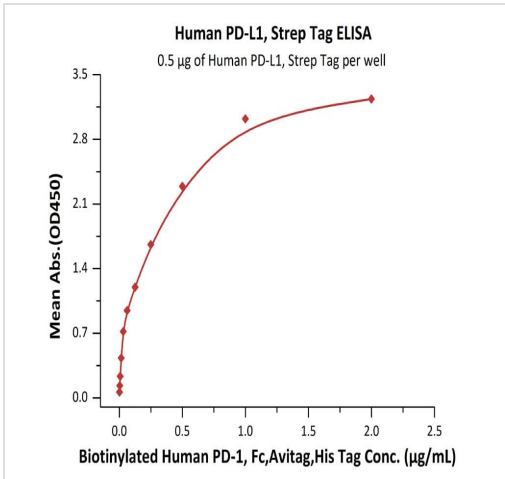
前処理および保存

保存方法および安定性	Shipped at 4°C. Upon delivery aliquot. Store at -80°C. Please see notes section. Reconstitute for long term storage. pH: 7.40 Constituents: 5% Trehalose, 95% PBS This product is an active protein and may elicit a biological response in vivo, handle with caution.
再構成	Reconstitute with sterile deionized water to a concentration of 200 µg/ml.

関連情報

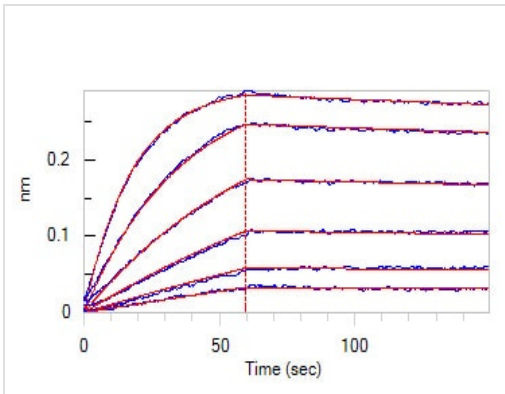
機能	Involved in the costimulatory signal, essential for T-cell proliferation and production of IL10 and IFNG, in an IL2-dependent and a PDCD1-independent manner. Interaction with PDCD1 inhibits T-cell proliferation and cytokine production.
組織特異性	Highly expressed in the heart, skeletal muscle, placenta and lung. Weakly expressed in the thymus, spleen, kidney and liver. Expressed on activated T- and B-cells, dendritic cells, keratinocytes and monocytes.
配列類似性	Belongs to the immunoglobulin superfamily. BTN/MOG family. Contains 1 Ig-like C2-type (immunoglobulin-like) domain. Contains 1 Ig-like V-type (immunoglobulin-like) domain.
細胞内局在	Cell membrane and Endomembrane system.

画像



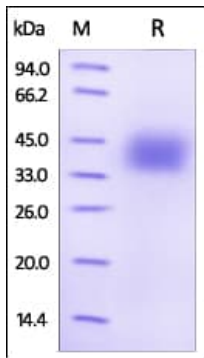
ELISA - Recombinant human PD-L1 protein (Active) (ab182689)

Immobilized ab182689 at 5 µg/mL (100 µL/well) can bind Recombinant human PD1 protein (Active) (Biotin) ([ab246155](#)) with a linear range of 0.002-0.25 µg/mL.



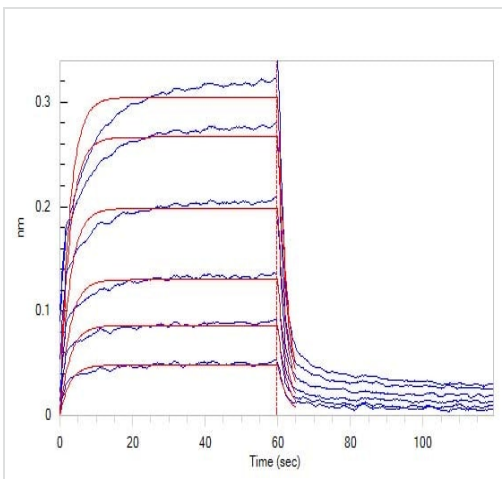
Functional Studies - Recombinant human PD-L1 protein (Active) (ab182689)

Loaded Anti-Human PD-L1 MAb (Human IgG1) on AHC Biosensor, can bind ab182689 with an affinity constant of 0.891 nM as determined in BLI assay.



SDS-PAGE - Recombinant human PD-L1 protein
(ab182689)

Human PD-L1, Strep Tag on SDS-PAGE under reducing (R) condition. The gel was stained overnight with Coomassie Blue. The protein migrates as 35-42 kDa due to glycosylation.



Functional Studies - Recombinant human PD-L1
protein (Active) (ab182689)

Loaded Recombinant human PD1 protein (Fc Chimera Active) (**ab221398**) on Protein A Biosensor, can bind ab182689 with an affinity constant of 2.2 μM as determined in BLI assay.

Please note: All products are "FOR RESEARCH USE ONLY. NOT FOR USE IN DIAGNOSTIC PROCEDURES"

Our Abpromise to you: Quality guaranteed and expert technical support

- Replacement or refund for products not performing as stated on the datasheet
- Valid for 12 months from date of delivery
- Response to your inquiry within 24 hours
- We provide support in Chinese, English, French, German, Japanese and Spanish
- Extensive multi-media technical resources to help you

- We investigate all quality concerns to ensure our products perform to the highest standards

If the product does not perform as described on this datasheet, we will offer a refund or replacement. For full details of the Abpromise, please visit <https://www.abcam.co.jp/abpromise> or contact our technical team.

Terms and conditions

- Guarantee only valid for products bought direct from Abcam or one of our authorized distributors