

### Recombinant human PAI1 (mutated S119C) protein ab92830

画像数 1

#### 製品の詳細

製品名	Recombinant human PAI1 (mutated S119C) protein
生理活性	90 (+/-) 5% active by uPA titration Kinetic Data: Second order rate constants for inhibition of: uPA = $6.3 \times 10^6 \text{ M}^{-1}\text{s}^{-1}$ tPA = $5.7 \times 10^6 \text{ M}^{-1}\text{s}^{-1}$
精製度	> 95 % SDS-PAGE. > 98% pure by SDS PAGE
発現系	Escherichia coli
タンパク質長	Full length protein
Animal free	No
由来	Recombinant
生物種	Human
修飾	mutated S119C
製品の詳細	Recombinant human PAI1 (mutated S119) protein

#### 特性

Our **Abpromise guarantee** covers the use of **ab92830** in the following tested applications.

The application notes include recommended starting dilutions; optimal dilutions/concentrations should be determined by the end user.

アプリケーション	Functional Studies SDS-PAGE
製品の状態	Liquid
備考	Solubility: > 2 mg/mL and < 5 mg/mL

This mutant contains a Ser to Cys replacement around the vitronectin binding site. Incorporation of an NBD labels allows for the reporting of binding to vitronectin.

#### 前処理および保存

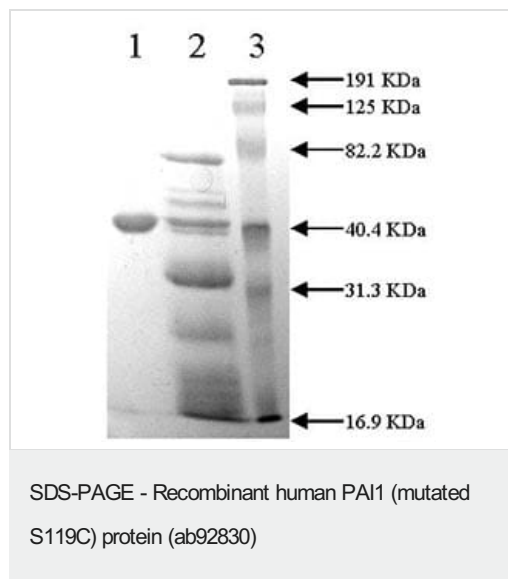
保存方法および安定性	Shipped on dry ice. Upon delivery aliquot and store at -80°C. Avoid freeze / thaw cycles. pH: 6.60 Constituents: 0.82% Sodium phosphate, 0.0292% EDTA, 0.58% Sodium chloride
------------	--

This product is an active protein and may elicit a biological response in vivo, handle with caution.

## 関連情報

機能	This inhibitor acts as 'bait' for tissue plasminogen activator, urokinase, and protein C. Its rapid interaction with TPA may function as a major control point in the regulation of fibrinolysis.
組織特異性	Found in plasma and platelets and in endothelial, hepatoma and fibrosarcoma cells.
関連疾患	Defects in SERPINE1 are the cause of plasminogen activator inhibitor-1 deficiency (PAI-1D) [MIM:613329]. It is a hematologic disorder characterized by increased bleeding after trauma, injury, or surgery. Affected females have menorrhagia. The bleeding defect is due to increased fibrinolysis of fibrin blood clots due to deficiency of plasminogen activator inhibitor-1, which inhibits tissue and urinary activators of plasminogen. Note=High concentrations of SERPINE1 seem to contribute to the development of venous but not arterial occlusions.
配列類似性	Belongs to the serpin family.
翻訳後修飾	Inactivated by proteolytic attack of the urokinase-type (u-PA) and the tissue-type (TPA), cleaving the 369-Arg-Met-370 bond.
細胞内局在	Secreted.

## 画像



10% SDS-PAGE analysis of ab92830

Lane 1: **ab92839** (3μg) Reduced

Lane 2: **ab92839** (3μg) + uPA (10μg) Reduced

Lane 3: Molecular weight markers

**Please note:** All products are "FOR RESEARCH USE ONLY. NOT FOR USE IN DIAGNOSTIC PROCEDURES"

## Our Abpromise to you: Quality guaranteed and expert technical support

- Replacement or refund for products not performing as stated on the datasheet
- Valid for 12 months from date of delivery
- Response to your inquiry within 24 hours

- We provide support in Chinese, English, French, German, Japanese and Spanish
- Extensive multi-media technical resources to help you
- We investigate all quality concerns to ensure our products perform to the highest standards

If the product does not perform as described on this datasheet, we will offer a refund or replacement. For full details of the Abpromise, please visit <https://www.abcam.co.jp/abpromise> or contact our technical team.

#### **Terms and conditions**

---

- Guarantee only valid for products bought direct from Abcam or one of our authorized distributors