

Product datasheet

Recombinant Human Nrf2 protein ab114160

画像数 1

製品の詳細

製品名	Recombinant Human Nrf2 protein
発現系	Wheat germ
アクセッション番号	Q16236
タンパク質長	Protein fragment
Animal free	No
由来	Recombinant
生物種	Human
配列	FAQLQLDEETGEFLPIQPAQHIQSETSGSANYSQVAHIPKSD ALYFDDCM QLLAQTFFVDDNEVSSATFQSLVPDIPGHIESPVFIATNQA QSPETSVA
予測される分子量	37 kDa including tags
領域	71 to 170
タグ	GST tag N-Terminus

特性

Our **Abpromise guarantee** covers the use of **ab114160** in the following tested applications.

The application notes include recommended starting dilutions; optimal dilutions/concentrations should be determined by the end user.

アプリケーション	Western blot ELISA SDS-PAGE
製品の状態	Liquid

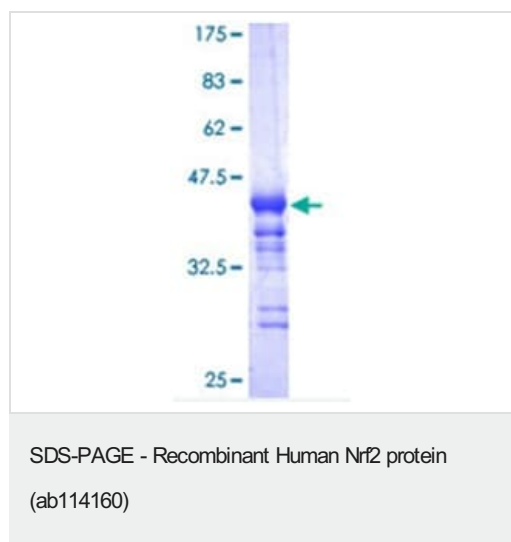
前処理および保存

保存方法および安定性	Shipped on dry ice. Upon delivery aliquot and store at -80°C. Avoid freeze / thaw cycles. pH: 8 Constituents: 0.3% Glutathione, 0.79% Tris HCl
------------	--

関連情報

機能	Transcription activator that binds to antioxidant response (ARE) elements in the promoter regions of target genes. Important for the coordinated up-regulation of genes in response to oxidative stress. May be involved in the transcriptional activation of genes of the beta-globin cluster by mediating enhancer activity of hypersensitive site 2 of the beta-globin locus control region.
組織特異性	Widely expressed. Highest expression in adult muscle, kidney, lung, liver and in fetal muscle.
配列類似性	Belongs to the bZIP family. CNC subfamily. Contains 1 bZIP domain.
ドメイン	Acidic activation domain in the N-terminus, and DNA binding domain in the C-terminus.
翻訳後修飾	Phosphorylation of Ser-40 by PKC in response to oxidative stress dissociates NFE2L2 from its cytoplasmic inhibitor KEAP1, promoting its translocation into the nucleus.
細胞内局在	Cytoplasm > cytosol. Nucleus. Cytosolic under unstressed conditions, translocates into the nucleus upon induction by electrophilic agents.

画像



12.5% SDS-PAGE analysis of ab114160, stained with Coomassie Blue.

Please note: All products are "FOR RESEARCH USE ONLY. NOT FOR USE IN DIAGNOSTIC PROCEDURES"

Our Abpromise to you: Quality guaranteed and expert technical support

- Replacement or refund for products not performing as stated on the datasheet
- Valid for 12 months from date of delivery
- Response to your inquiry within 24 hours
- We provide support in Chinese, English, French, German, Japanese and Spanish
- Extensive multi-media technical resources to help you
- We investigate all quality concerns to ensure our products perform to the highest standards

If the product does not perform as described on this datasheet, we will offer a refund or replacement. For full details of the Abpromise, please visit <https://www.abcam.co.jp/abpromise> or contact our technical team.

Terms and conditions

- Guarantee only valid for products bought direct from Abcam or one of our authorized distributors