

## Product datasheet

# Recombinant Human NKIRAS1 protein ab123143

画像数 1

### 製品の詳細

---

製品名	Recombinant Human NKIRAS1 protein
精製度	> 95 % SDS-PAGE. ab123143 was purified using conventional chromatography.
発現系	Escherichia coli
アクセッション番号	<b><u>Q9NYS0</u></b>
タンパク質長	Full length protein
Animal free	No
由来	Recombinant
生物種	Human
配列	MGSSHHHHHSSGLVPRGSHMGKCKVVVCGLLSVGKTAILE QLLYGNHT IGMEDCETMEDVYMASVETDRGVKEQLHLYDTRGLQEGVELP KHYFSFAD GFVLVYSVNNLESFQRVELLKKKEIDKFKDKKEVAIVVLGNKI DLSEQRQV DAEVAQQWAKSEKVRLEWVTVTDRKTLIEPFTLLASKLSQPQ SKSSFPLP GRKNKGNSNSEN
予測される分子量	24 kDa including tags
領域	1 to 192
タグ	His tag N-Terminus

### 特性

---

Our **Abpromise guarantee** covers the use of **ab123143** in the following tested applications.

The application notes include recommended starting dilutions; optimal dilutions/concentrations should be determined by the end user.

アプリケーション	SDS-PAGE Mass Spectrometry
質量分析	MALDI-TOF
製品の状態	Liquid

### 前処理および保存

## 保存方法および安定性

Shipped at 4°C. Store at +4°C short term (1-2 weeks). Upon delivery aliquot. Store at -20°C or -80°C. Avoid freeze / thaw cycle.

pH: 8.00

Constituents: 0.02% DTT, 0.32% Tris HCl, 20% Glycerol (glycerin, glycerine)

## 関連情報

### 機能

Atypical Ras-like protein that acts as a potent regulator of NF-kappa-B activity by preventing the degradation of NF-kappa-B inhibitor beta (NFKBIB) by most signals, explaining why NFKBIB is more resistant to degradation. May act by blocking phosphorylation of NFKBIB and mediating cytoplasmic retention of p65/RELA NF-kappa-B subunit. It is unclear whether it acts as a GTPase. Both GTP- and GDP-bound forms block phosphorylation of NFKBIB.

### 組織特異性

Widely expressed.

### 配列類似性

Belongs to the small GTPase superfamily. Ras family. KappaB-Ras subfamily.

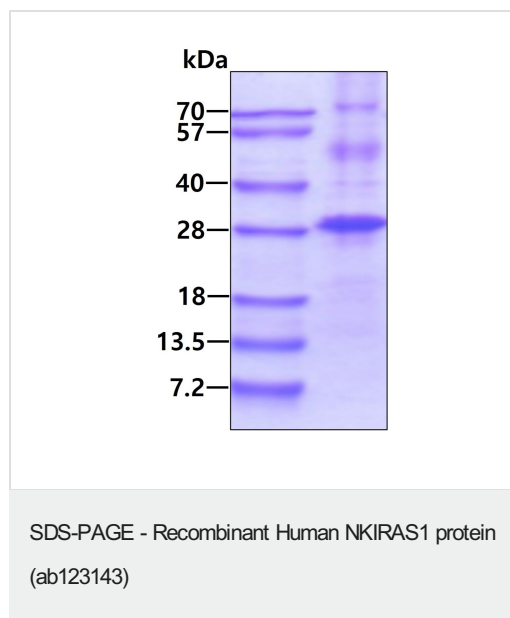
### ドメイン

In contrast to other members of the Ras family, the members of the KappaB-Ras subfamily do not contain the conserved Gly and Gln residues in positions 13 and 65, which are replaced by Leu residues, and are therefore similar to the constitutively active forms of oncogenic forms of Ras. This suggests that members of this family are clearly different from other small GTPases proteins.

### 細胞内局在

Cytoplasm.

## 画像



SDS-PAGE analysis of ab123143 (3 µg).

**Please note:** All products are "FOR RESEARCH USE ONLY. NOT FOR USE IN DIAGNOSTIC PROCEDURES"

## Our Abpromise to you: Quality guaranteed and expert technical support

- Replacement or refund for products not performing as stated on the datasheet

- Valid for 12 months from date of delivery
- Response to your inquiry within 24 hours
  
- We provide support in Chinese, English, French, German, Japanese and Spanish
- Extensive multi-media technical resources to help you
- We investigate all quality concerns to ensure our products perform to the highest standards

If the product does not perform as described on this datasheet, we will offer a refund or replacement. For full details of the Abpromise, please visit <https://www.abcam.co.jp/abpromise> or contact our technical team.

### **Terms and conditions**

---

- Guarantee only valid for products bought direct from Abcam or one of our authorized distributors