

# Recombinant Human NIPP1 protein ab131705

**1 References** [画像数 1](#)

### 製品の詳細

製品名	Recombinant Human NIPP1 protein		
精製度	> 90 % SDS-PAGE. ab131705 is purified using conventional chromatography techniques		
発現系	Escherichia coli		
アクセッション番号	<b><u>Q12972</u></b>		
タンパク質長	Full length protein		
Animal free	No		
由来	Recombinant		
生物種	Human		
配列	MAAAANS	GSS LPL	FDCPTWA GKPPPGLHLD
	VVKGD	KLIEK LIIDE	KKYYL FGRNPDLCDF
	TIDHQ	SCSRV HAAL	VYHKHL KRVFLIDLNS
	THGT	FLGHIR LEP	HKPQQIP IDSTVSFGAS
	TRAY	TREKP QTL	PSAVKGD EKMGGEDDEL
	KGLL	GLPEEE TEL	DNLTEFN TAHNKRISTL
	TIEE	GNLDIQ RPK	RKRKNSR VTFSEDEII
	NPED	VDPSVG RFR	NMVQTAV VPVKKRVEG
	PGSL	GLEESG SRR	MQNFAFS GGLYGGLPPT
	HSEAG	SQPHG IHG	TALIGGL PMPYPNLAPD
	VDLT	PVVPSA VNM	NPAPNPA VYNPEAVNEP
	KKKK	YAKEAW PG	KKPTPSLL IVEHHHHHH
予測される分子量	40 kDa including tags		
領域	1 to 351		
タグ	His tag C-Terminus		

### 特性

Our **Abpromise guarantee** covers the use of **ab131705** in the following tested applications.

The application notes include recommended starting dilutions; optimal dilutions/concentrations should be determined by the end user.

アプリケーション	SDS-PAGE
	Mass Spectrometry
質量分析	MALDI-TOF

**製品の状態**

Liquid

**前処理および保存**

---

**保存方法および安定性**

Shipped at 4°C. Store at +4°C short term (1-2 weeks). Upon delivery aliquot. Store at -20°C or -80°C. Avoid freeze / thaw cycle.

pH: 8.00

Constituents: 0.03% DTT, 0.32% Tris HCl, 20% Glycerol (glycerin, glycerine), 1.17% Sodium chloride

**関連情報**

---

**機能**

Inhibitor subunit of the major nuclear protein phosphatase-1 (PP-1). It has RNA-binding activity but does not cleave RNA and may target PP-1 to RNA-associated substrates. May also be involved in pre-mRNA splicing. Binds DNA and might act as a transcriptional repressor. Seems to be required for cell proliferation.

Isoform Gamma is a site-specific single-strand endoribonuclease that cleaves single strand RNA 3' to purines and pyrimidines in A+U-rich regions. It generates 5'-phosphate termini at the site of cleavage. This isoform does not inhibit PP-1. May be implicated in mRNA splicing.

**組織特異性**

Ubiquitously expressed, with highest levels in heart and skeletal muscle, followed by brain, placenta, lung, liver and pancreas. Less abundant in kidney. The concentration and ratio between isoforms is cell-type dependent. Isoform Alpha (>90%) and isoform Beta were found in brain, heart and kidney. Isoform Gamma is mainly found in B-cells and T-lymphocytes, and has been found in 293 embryonic kidney cells.

**配列類似性**

Contains 1 FHA domain.

**ドメイン**

Has a basic N- and C-terminal and an acidic central domain.

**翻訳後修飾**

May be inactivated by phosphorylation on Ser-199 or Ser-204 (By similarity). Phosphorylated by Lyn in vitro on Tyr-264, and also on Tyr-335 in the presence of RNA.

**細胞内局在**

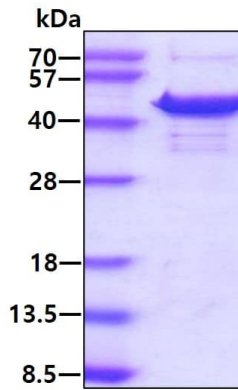
Nucleus. Nucleus speckle. Primarily, but not exclusively, nuclear and Cytoplasm. Found mainly in the cytoplasm.

---

**画像**

---

SDS-PAGE analysis of ab131705 at 3µg under reducing condition.



SDS-PAGE - Recombinant Human NIPP1 protein  
(ab131705)

**Please note:** All products are "FOR RESEARCH USE ONLY. NOT FOR USE IN DIAGNOSTIC PROCEDURES"

#### **Our Abpromise to you: Quality guaranteed and expert technical support**

---

- Replacement or refund for products not performing as stated on the datasheet
- Valid for 12 months from date of delivery
- Response to your inquiry within 24 hours
  
- We provide support in Chinese, English, French, German, Japanese and Spanish
- Extensive multi-media technical resources to help you
- We investigate all quality concerns to ensure our products perform to the highest standards

If the product does not perform as described on this datasheet, we will offer a refund or replacement. For full details of the Abpromise, please visit <https://www.abcam.co.jp/abpromise> or contact our technical team.

#### **Terms and conditions**

---

- Guarantee only valid for products bought direct from Abcam or one of our authorized distributors