

Recombinant Human NIPBL protein ab131913

[1 References](#) [画像数 1](#)

製品の詳細

製品名	Recombinant Human NIPBL protein
発現系	Wheat germ
アクセッション番号	<u>Q6KC79-2</u>
タンパク質長	Protein fragment
Animal free	No
由来	Recombinant
生物種	Human
配列	MKCLPENSAPLIEFANVSQGILLMLLKQHLKNLCGFSDSKI QKYSPPSES AKVYDKAINRKTGVHFHPKQTLDFLRSDMANSKITEEVKRSI VKQYLDFK LLMEHLDPDEEEEEGEVSASTNARNKAITSLGGGSPKNNTA AETEDDES DGEDRGGGTSGVRRRRSQRISQRIT
予測される分子量	46 kDa including tags
領域	2524 to 2697

特性

Our **Abpromise guarantee** covers the use of **ab131913** in the following tested applications.

The application notes include recommended starting dilutions; optimal dilutions/concentrations should be determined by the end user.

アプリケーション	ELISA Western blot SDS-PAGE
製品の状態	Liquid
備考	This product was previously labelled as IDN3.

前処理および保存

保存方法および安定性 Shipped on dry ice. Upon delivery aliquot and store at -80°C. Avoid freeze / thaw cycles.

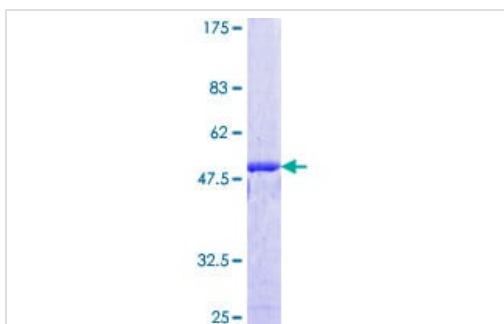
pH: 8.00

Constituents: 0.3% Glutathione, 0.79% Tris HCl

関連情報

機能	Probably plays a structural role in chromatin. Involved in sister chromatid cohesion, possibly by interacting with the cohesin complex.
組織特異性	Widely expressed. Highly expressed in heart, skeletal muscle, fetal and adult liver, fetal and adult kidney. Expressed at intermediates level in thymus, placenta, peripheral leukocyte and small intestine. Weakly or not expressed in brain, colon, spleen and lung.
関連疾患	Cornelia de Lange syndrome 1
配列類似性	Belongs to the SCC2/Nipped-B family. Contains 5 HEAT repeats.
発生段階	In embryos, it is expressed in developing limbs and later in cartilage primordia of the ulna and of various hand bones. Sites of craniofacial expression include the cartilage primordium of the basioccipital and basisphenoid skull bones and elsewhere in the head and face, including a region encompassing the mesenchyme adjacent to the cochlear canal. Also expressed in the spinal column, notochord and surface ectoderm sclerotome and what seem to be migrating myoblasts. Expressed in the developing heart in the atrial and ventricular myocardium and in the ventricular tubeculae but absent in the endocardial cushions. Also expressed in the developing esophagus, trachea and midgut loops, in the bronchi of the lung and in the tubules of the metanephros. Expression in organs and tissues not typically affected in CDL (e.g. the developing trachea, bronchi, esophagus, heart and kidney) may reflect a bias towards underreporting of more subtle aspects of the phenotype or problems that typically present later in life. Expressed in the mesenchyme surrounding the cochlear canal possibly reflecting the hearing impairment commonly found. Weakly or not expressed in embryonic brain.
ドメイン	Contains one Pro-Xaa-Val-Xaa-Leu (PxVxL) motif, which is required for interaction with chromoshadow domains. This motif requires additional residues -7, -6, +4 and +5 of the central Val which contact the chromoshadow domain.
細胞内局在	Nucleus.

画像



ab131913 on a 12.5% SDS-PAGE Stained with Coomassie Blue.

SDS-PAGE - Recombinant Human NIPBL protein
(ab131913)

Please note: All products are "FOR RESEARCH USE ONLY. NOT FOR USE IN DIAGNOSTIC PROCEDURES"

Our Abpromise to you: Quality guaranteed and expert technical support

- Replacement or refund for products not performing as stated on the datasheet
- Valid for 12 months from date of delivery
- Response to your inquiry within 24 hours

- We provide support in Chinese, English, French, German, Japanese and Spanish
- Extensive multi-media technical resources to help you
- We investigate all quality concerns to ensure our products perform to the highest standards

If the product does not perform as described on this datasheet, we will offer a refund or replacement. For full details of the Abpromise, please visit <https://www.abcam.co.jp/abpromise> or contact our technical team.

Terms and conditions

- Guarantee only valid for products bought direct from Abcam or one of our authorized distributors