

Recombinant Human Nephrin protein ab114263

画像数 1

製品の詳細

製品名	Recombinant Human Nephrin protein
発現系	Wheat germ
アクセッション番号	<u>O60500</u>
タンパク質長	Protein fragment
Animal free	No
由来	Recombinant
生物種	Human
配列	GFWALPENLTVVEGASVELRCGVSTPGSAVQWAKDGLLLGPD PRIPGFPR YRLEGDPARGEFHLHIEACDLSDDAEYECQVGRSEMGPEL
予測される分子量	36 kDa including tags
領域	33 to 122
タグ	GST tag N-Terminus

特性

Our **Abpromise guarantee** covers the use of **ab114263** in the following tested applications.

The application notes include recommended starting dilutions; optimal dilutions/concentrations should be determined by the end user.

アプリケーション	SDS-PAGE Western blot ELISA
製品の状態	Liquid
備考	

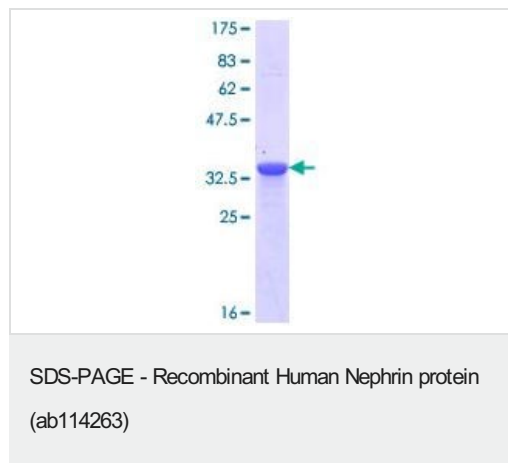
前処理および保存

保存方法および安定性	Shipped on dry ice. Upon delivery aliquot and store at -80°C. Avoid freeze / thaw cycles. pH: 8.00 Constituents: 0.3% Glutathione, 0.79% Tris HCl
------------	---

関連情報

機能	Seems to play a role in the development or function of the kidney glomerular filtration barrier. Regulates glomerular vascular permeability. May anchor the podocyte slit diaphragm to the actin cytoskeleton. Plays a role in skeletal muscle formation through regulation of myoblast fusion.
組織特異性	Specifically expressed in podocytes of kidney glomeruli.
関連疾患	Defects in NPHS1 are the cause of nephrotic syndrome type 1 (NPHS1) [MIM:256300]; also known as Finnish congenital nephrosis (CNF). A renal disease characterized clinically by proteinuria, hypoalbuminemia, hyperlipidemia, and edema. Kidney biopsies show non-specific histologic changes such as focal segmental glomerulosclerosis and diffuse mesangial proliferation. Some affected individuals have an inherited steroid-resistant form and progress to end-stage renal failure.
配列類似性	Belongs to the immunoglobulin superfamily. Contains 1 fibronectin type-III domain. Contains 8 Ig-like C2-type (immunoglobulin-like) domains.
発生段階	In 23-week-old embryo found in epithelial podocytes of the periphery of mature and developing glomeruli.
翻訳後修飾	Phosphorylated on tyrosine residues.
細胞内局在	Cell membrane. Predominantly located at podocyte slit diaphragm between podocyte foot processes. Also associated with podocyte apical plasma membrane.

画像



ab114263 analysed on a 12.5% SDS-PAGE stained with Coomassie Blue.

Please note: All products are "FOR RESEARCH USE ONLY. NOT FOR USE IN DIAGNOSTIC PROCEDURES"

Our Promise to you: Quality guaranteed and expert technical support

- Replacement or refund for products not performing as stated on the datasheet
- Valid for 12 months from date of delivery
- Response to your inquiry within 24 hours

- We provide support in Chinese, English, French, German, Japanese and Spanish
- Extensive multi-media technical resources to help you
- We investigate all quality concerns to ensure our products perform to the highest standards

If the product does not perform as described on this datasheet, we will offer a refund or replacement. For full details of the Abpromise, please visit <https://www.abcam.co.jp/abpromise> or contact our technical team.

Terms and conditions

- Guarantee only valid for products bought direct from Abcam or one of our authorized distributors