

# Recombinant human NEK11 protein ab125544

画像数 5

### 製品の詳細

製品名	Recombinant human NEK11 protein
生理活性	The specific activity of ab125544 was determined to be 25 nmol/min/mg as per activity assay protocol.
精製度	> 90 % SDS-PAGE. Assessed by densitometry. Affinity purified.
発現系	Baculovirus infected Sf9 cells
アクセッション番号	<b><u>Q8NG66</u></b>
タンパク質長	Full length protein
Animal free	No
由来	Recombinant
生物種	Human
予測される分子量	110 kDa including tags
領域	1 to 645

### 特性

Our **Abpromise guarantee** covers the use of **ab125544** in the following tested applications.

The application notes include recommended starting dilutions; optimal dilutions/concentrations should be determined by the end user.

アプリケーション	Western blot Functional Studies SDS-PAGE
製品の状態	Liquid
備考	<b><u>ab64311</u></b> (Myelin Basic Protein protein) can be utilized as a substrate for assessing kinase activity

### 前処理および保存

保存方法および安定性	Shipped on dry ice. Upon delivery aliquot and store at -80°C. Avoid freeze / thaw cycles. pH: 7.50 Constituents: 0.004% EGTA, 0.002% PMSF, 0.004% DTT, 0.79% Tris HCl, 0.003% EDTA, 25%
------------	---

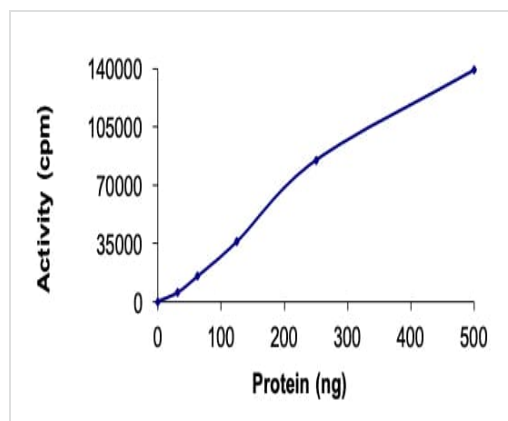
Glycerol (glycerin, glycerine), 0.88% Sodium chloride

This product is an active protein and may elicit a biological response in vivo, handle with caution.

## 関連情報

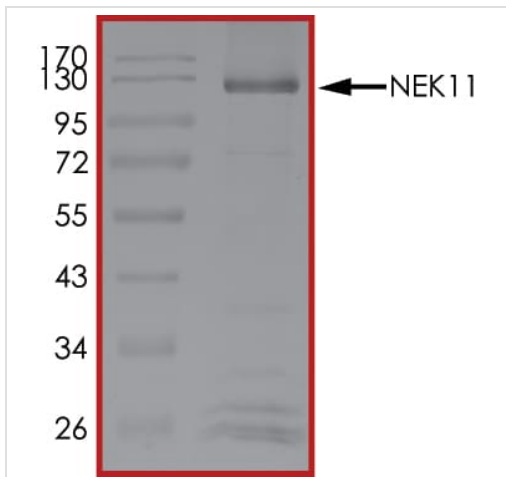
機能	Possible role in S-phase checkpoint mechanism.
組織特異性	Poorly expressed in cerebellum, trachea, lung, appendix, and uterus.
配列類似性	Belongs to the protein kinase superfamily. NEK Ser/Thr protein kinase family. NIMA subfamily. Contains 1 protein kinase domain.
発生段階	Predominantly expressed at S/G2/M phase.
翻訳後修飾	Phosphorylated.
細胞内局在	Nucleus. Nucleus > nucleolus. Nuclear during interphase but moves to the polar microtubules during prometaphase and metaphase. Accumulates in the nucleolus in G1/S-arrested cells.

## 画像



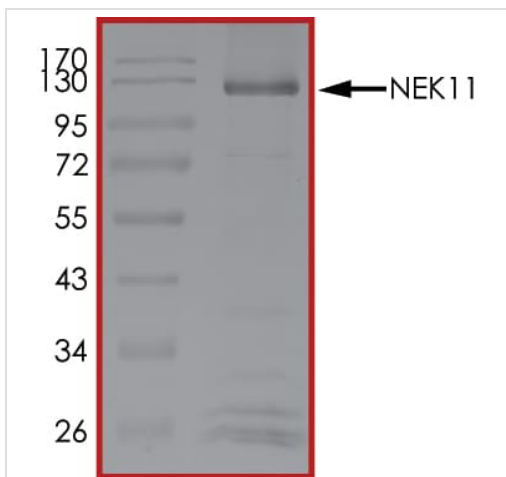
The specific activity of NEK11 (ab125544) was determined to be 21 nmol/min/mg as per activity assay protocol

Functional Studies - Recombinant human NEK11 protein (ab125544)



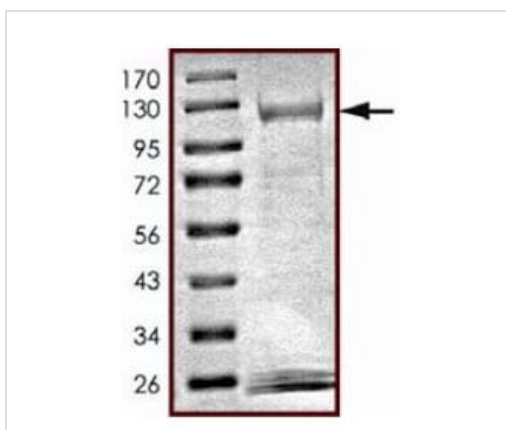
SDS-PAGE - Recombinant human NEK11 protein  
(ab125544)

SDS PAGE analysis of ab125544



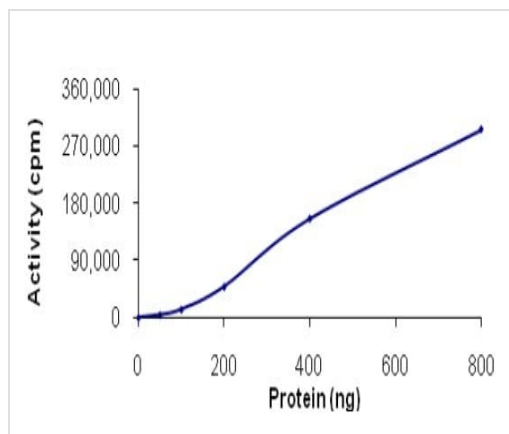
SDS-PAGE - Recombinant human NEK11 protein  
(ab125544)

SDS PAGE analysis of ab125544



SDS-PAGE - Recombinant human NEK11 protein  
(ab125544)

SDS-PAGE analysis of ab125544.



Functional Studies - Recombinant human NEK11 protein (ab125544)

The specific activity of ab125544 was determined to be 25nmol/min/mg.

**Please note:** All products are "FOR RESEARCH USE ONLY. NOT FOR USE IN DIAGNOSTIC PROCEDURES"

### Our Abpromise to you: Quality guaranteed and expert technical support

---

- Replacement or refund for products not performing as stated on the datasheet
- Valid for 12 months from date of delivery
- Response to your inquiry within 24 hours
- We provide support in Chinese, English, French, German, Japanese and Spanish
- Extensive multi-media technical resources to help you
- We investigate all quality concerns to ensure our products perform to the highest standards

If the product does not perform as described on this datasheet, we will offer a refund or replacement. For full details of the Abpromise, please visit <https://www.abcam.co.jp/abpromise> or contact our technical team.

### Terms and conditions

---

- Guarantee only valid for products bought direct from Abcam or one of our authorized distributors