

Recombinant human MYLK2 protein ab84800

画像数 5

製品の詳細

製品名	Recombinant human MYLK2 protein
生理活性	Specific activity: 270nmol/min/mg.
精製度	> 75 % Densitometry. Affinity purified.
発現系	Baculovirus infected Sf9 cells
タンパク質長	Full length protein
Animal free	No
由来	Recombinant
生物種	Human
タグ	His tag N-Terminus

特性

Our **Abpromise guarantee** covers the use of **ab84800** in the following tested applications.

The application notes include recommended starting dilutions; optimal dilutions/concentrations should be determined by the end user.

アプリケーション	Western blot Functional Studies
製品の状態	Liquid
備考	ab60014 (Mouse MYL9 full length protein) can be utilized as a substrate for assessing Kinase activity

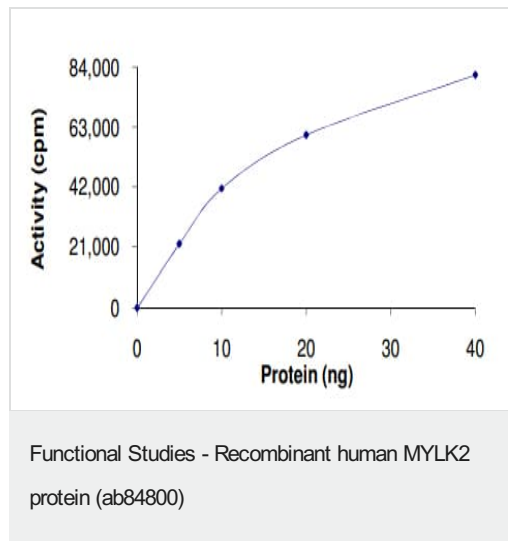
前処理および保存

保存方法および安定性	Shipped on dry ice. Upon delivery aliquot and store at -80°C. Avoid freeze / thaw cycles. pH: 7.00 Preservative: 1.02% Imidazole Constituents: 0.00174% PMSF, 0.82% Sodium phosphate, 0.00308% DTT, 25% Glycerol (glycerin, glycerine), 1.74% Sodium chloride This product is an active protein and may elicit a biological response in vivo, handle with caution.
------------	--

関連情報

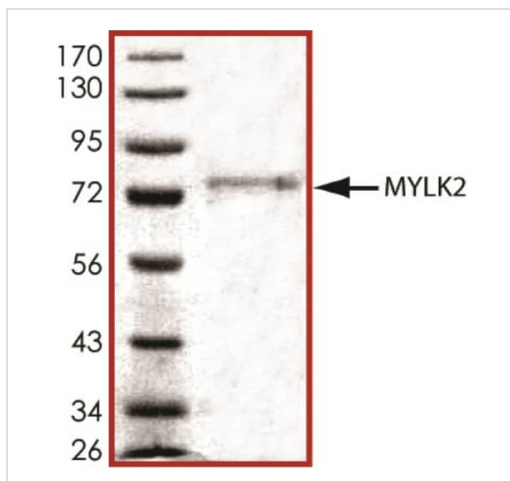
機能	Implicated in the level of global muscle contraction and cardiac function. Phosphorylates a specific serine in the N-terminus of a myosin light chain.
組織特異性	Heart and skeletal muscles. Increased expression in the apical tissue compared to the interventricular septal tissue.
関連疾患	Defects in MYLK2 are a cause of familial hypertrophic cardiomyopathy (CMH) [MIM:192600]; also designated FHC or HCM. Familial hypertrophic cardiomyopathy is a hereditary heart disorder characterized by ventricular hypertrophy, which is usually asymmetric and often involves the interventricular septum. The symptoms include dyspnea, syncope, collapse, palpitations, and chest pain. They can be readily provoked by exercise. The disorder has inter- and intrafamilial variability ranging from benign to malignant forms with high risk of cardiac failure and sudden cardiac death.
配列類似性	Belongs to the protein kinase superfamily. CAMK Ser/Thr protein kinase family. Contains 1 protein kinase domain.
細胞内局在	Cytoplasm. Colocalizes with phosphorylated myosin light chain (RLCP) at filaments of the myofibrils.

画像



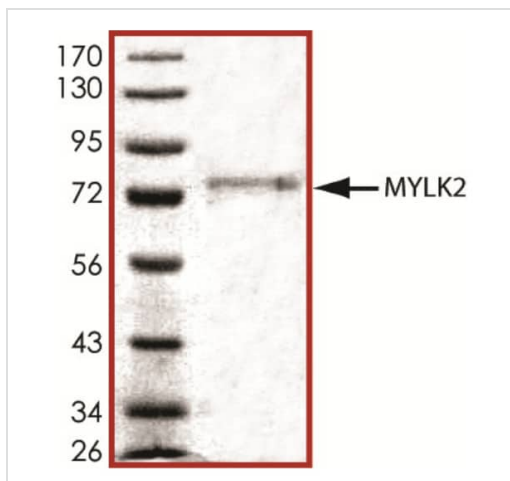
The specific activity of MYLK2 (ab84800) was determined to be 238 nmol/min/mg as per activity assay protocol

SDS PAGE analysis of ab84800



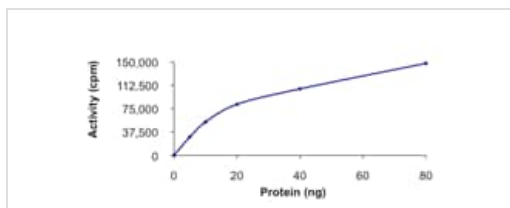
SDS-PAGE - Recombinant human MYLK2 protein (ab84800)

SDS PAGE analysis of ab84800



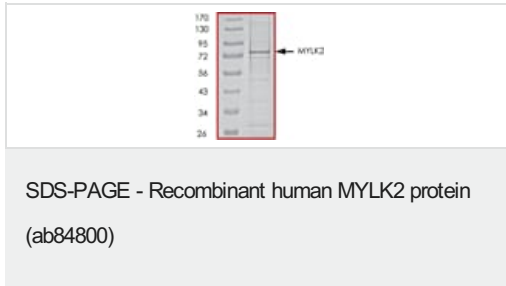
SDS-PAGE - Recombinant human MYLK2 protein (ab84800)

Specific activity of ab84800



Functional Studies - Recombinant human MYLK2 protein (ab84800)

SDS page analysis of ab84800



Please note: All products are "FOR RESEARCH USE ONLY. NOT FOR USE IN DIAGNOSTIC PROCEDURES"

Our Abpromise to you: Quality guaranteed and expert technical support

- Replacement or refund for products not performing as stated on the datasheet
- Valid for 12 months from date of delivery
- Response to your inquiry within 24 hours
- We provide support in Chinese, English, French, German, Japanese and Spanish
- Extensive multi-media technical resources to help you
- We investigate all quality concerns to ensure our products perform to the highest standards

If the product does not perform as described on this datasheet, we will offer a refund or replacement. For full details of the Abpromise, please visit <https://www.abcam.co.jp/abpromise> or contact our technical team.

Terms and conditions

- Guarantee only valid for products bought direct from Abcam or one of our authorized distributors