

Recombinant Human MS2 protein - BSA and Azide free ab174041

画像数 1

製品の詳細

製品名	Recombinant Human MS2 protein - BSA and Azide free	
精製度	> 90 % SDS-PAGE.	
エンドキシン・レベル	< 1.000 Eu/μg	
発現系	HEK 293 cells	
アクセッション番号	<u>P78325-1</u>	
タンパク質長	Protein fragment	
Animal free	No	
キャリア・フリー	はい	
由来	Recombinant	
生物種	Human	
配列	<p>IAPSRPWALMEQYEVVLPWRLPGPRVRRALPSHLGLHPERVS YVLGATGH NFTLHLRKNRDLLGSGYTETYTAANGSEVTEQPRGQDHCFYQ GHVEGYPD SAASLSTCAGLRGFFQVGSDLHLIEPLDEGGEGGRHAVYQAE HLLQTAGT CGVSDDSLGSLLGPRTAAVFRPRPGDSLPSRETRYVELYVVV DNAEFQML GSEAAVRHRVLEVVNHVDKLYQKLNFRVVLVGLEIWN SQDRF HVSPDPSV TLENLLTWQARQRTRRHLHDNVQLITGVDFGTGTVGFARVSA MSHSSGA VNQDHSKNPVGVACTMAHEMGHNLGMDHDENVQGCRCQERFE AGRCIMAG SIGSSFPRMFSDCSQAYLESFLERPQSVCLANAPDLSHLVGG PVCGNLFV ERGEQDCGPPEDCRNRCCNSTTCQLAEGAQCAHGTCQCECK VKPAGELC RPKKDMCDLEEFCDGRHPECPEDAFQENGTG</p>	
予測される分子量	72 kDa including tags	
分子量情報	This protein has a calculated MW of 53.8 kDa, which migrates as a 130-150 kDa band in DTT-	

reduced SDS-PAGE due to glycosylation. Two main fragments bands are visible with apparent MW of 58-68 kDa and 35-40 kDa respectively in reduced SDS-PAGE as a result of its being prone to proteolytic cleavage.

領域	17 to 497
タグ	His tag C-Terminus
製品の詳細	Recombinant Human MS2 protein (BSA and azide free)

特性

Our **Abpromise guarantee** covers the use of **ab174041** in the following tested applications.

The application notes include recommended starting dilutions; optimal dilutions/concentrations should be determined by the end user.

アプリケーション	SDS-PAGE
製品の状態	Lyophilized
備考	Lyophilized from 0.22 µm filtered solution. This product is stable after storage at: -20°C to -70°C for 12 months in lyophilized state; -70°C for 3 months under sterile conditions after reconstitution.

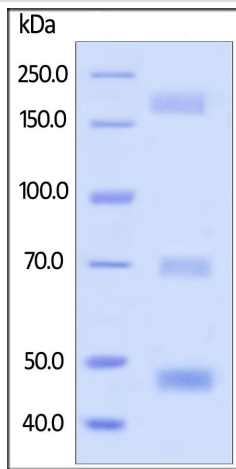
前処理および保存

保存方法および安定性	Shipped at 4°C. Upon delivery aliquot. Store at -20°C or -80°C. Avoid freeze / thaw cycle. Please see notes section. pH: 7.4 Constituents: 0.88% Sodium chloride, 0.61% Tris, 0.11% Calcium chloride, 5% Trehalose
再構成	Reconstitute with sterile deionized water to a concentration of 200 µg/ml.

関連情報

機能	Possible involvement in extravasation of leukocytes.
組織特異性	Expressed on neutrophils and monocytes.
配列類似性	Contains 1 disintegrin domain. Contains 1 EGF-like domain. Contains 1 peptidase M12B domain.
細胞内局在	Membrane.

画像



SDS-PAGE - Recombinant Human MS2 protein -
BSA and Azide free (ab174041)

SDS-PAGE of reduced ab174041 stained overnight with Coomassie Blue. The protein migrates as 180-220 kDa due to glycosylation. Two main fragments are visible with apparent molecular weight of 69-73 kDa and 46-48 kDa as a result of its being prone to proteolytic cleavage.

Please note: All products are "FOR RESEARCH USE ONLY. NOT FOR USE IN DIAGNOSTIC PROCEDURES"

Our Abpromise to you: Quality guaranteed and expert technical support

- Replacement or refund for products not performing as stated on the datasheet
- Valid for 12 months from date of delivery
- Response to your inquiry within 24 hours
- We provide support in Chinese, English, French, German, Japanese and Spanish
- Extensive multi-media technical resources to help you
- We investigate all quality concerns to ensure our products perform to the highest standards

If the product does not perform as described on this datasheet, we will offer a refund or replacement. For full details of the Abpromise, please visit <https://www.abcam.co.jp/abpromise> or contact our technical team.

Terms and conditions

- Guarantee only valid for products bought direct from Abcam or one of our authorized distributors