

Recombinant Human MKP-1 protein ab114331

[1 References](#) [画像数 1](#)

製品の詳細

製品名 Recombinant Human MKP-1 protein

発現系 Wheat germ

アクセッション番号 **P28562**

タンパク質長 Full length protein

Animal free No

由来 Recombinant

生物種 Human

配列 MVMEVGTLLDA GGLRALLGER AAQCLLLDCR
SFFAFNAGHI AGSVNVRVST IVRRRAKGM
GLEHIVPNAE LRGRLLAGAY HAVVLLDERS
AALDGAKRDG TLALAAGALC REARAAQVFF
LKGGEAFSA SCPELCSKQS TPMGLSLPLS
TSVPDSAESG CSSCSTPLYD QGGPVEILPF
LYLGSAYHAS RKDMLDALGI TALINVSANC
PNHFEGHYQY KSIPVEDNHK ADISSWFNEA
IDFIDSIKNA GGRVHVHCQA GISRSATICL
AYLMRTNRVK LDEAFEFVKQ RRSIISPNS
FMGQLLQFES QVLAPHCSAE AGSPAMAVLD
RGTSTTTVFN FPVSIPVHST NSALSYLQSP ITTSPSC

予測される分子量 66 kDa including tags

領域 1 to 367

特性

Our **Abpromise guarantee** covers the use of **ab114331** in the following tested applications.

The application notes include recommended starting dilutions; optimal dilutions/concentrations should be determined by the end user.

アプリケーション SDS-PAGE

Western blot

ELISA

製品の状態 Liquid

保存方法および安定性

Shipped on dry ice. Upon delivery aliquot and store at -80°C. Avoid freeze / thaw cycles.

pH: 8.00

Constituents: 0.3% Glutathione, 0.79% Tris HCl

関連情報

機能

Dual specificity phosphatase that dephosphorylates MAP kinase ERK2 on both 'Thr-183' and 'Tyr-185'.

組織特異性

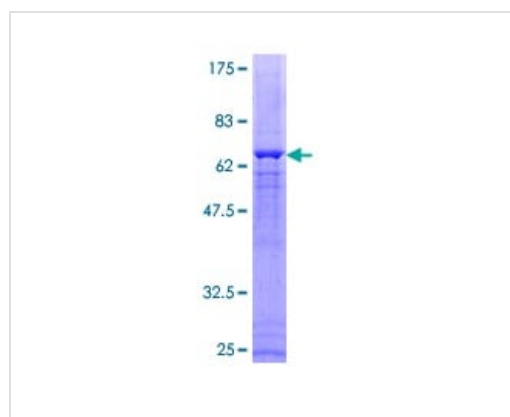
Expressed at high levels in the lung, liver placenta and pancreas. Moderate levels seen in the heart and skeletal muscle. Lower levels found in the brain and kidney.

配列類似性

Belongs to the protein-tyrosine phosphatase family. Non-receptor class dual specificity subfamily. Contains 1 rhodanese domain.

Contains 1 tyrosine-protein phosphatase domain.

画像



ab114331 analysed on a 12.5% SDS-PAGE gel stained with Coomassie Blue

SDS-PAGE - Recombinant Human MKP-1 protein (ab114331)

Please note: All products are "FOR RESEARCH USE ONLY. NOT FOR USE IN DIAGNOSTIC PROCEDURES"

Our Abpromise to you: Quality guaranteed and expert technical support

- Replacement or refund for products not performing as stated on the datasheet
- Valid for 12 months from date of delivery
- Response to your inquiry within 24 hours
- We provide support in Chinese, English, French, German, Japanese and Spanish
- Extensive multi-media technical resources to help you
- We investigate all quality concerns to ensure our products perform to the highest standards

If the product does not perform as described on this datasheet, we will offer a refund or replacement. For full details of the Abpromise,

please visit <https://www.abcam.co.jp/abpromise> or contact our technical team.

Terms and conditions

- Guarantee only valid for products bought direct from Abcam or one of our authorized distributors