

Recombinant Human METTL3 protein ab163377

画像数 1

製品の詳細

製品名	Recombinant Human METTL3 protein
発現系	Wheat germ
タンパク質長	Full length protein
Animal free	No
由来	Recombinant
生物種	Human
配列	MSDTWSSIQAHHKQLDSLRLRERLQRRRKQDSGHLDLRNPEAAL SPTFRSDS PVPTAPTSGGPKPSTASAVPELATDPELEKLLHHLSDLALT LPTDAVSI CLAISTPDAPATQDGVESLLQKFAAQELIEVKRGLLQDDAHP TLVTYADH SKLSAMMGAVAEKKGPEVAGTVTGQKRRAEQDSTTVAAFAS SLVSGLNS SASEPAKEPAKKSRRKHAASDVLEIESLLNQSTKEQQSKKV SQEILELL NTTTAKEQSIVEKFRSRGRAQVQEFCDYGTKEECMKASADR PCRKLHFR RIINKHTDESLGDCSFLNTCFHMDTCKYVHYEIDACMDSEAP GSKDHTPS QELALTQSVGGDSSADRLFPPQWICCDIRYLDVSIKFAVV MADPPWDI HMELPYGTLTDEMRRLNIPVLQDDGFLFLWVTGRAMELGRE CLNLWGYE RVDEIIWVKTNQLQRIIRTGRTGHWLNHGKEHCLVGKGNPQ GFNQGLDC DVIVAEVRSTSHKPDEIYGMIERLSPGTRKIELFGRPHNVQP NWITLGNQ LDGIHLLDPDVVARFKQRYPDGIISKPKNL
領域	1 to 580
タグ	GST tag N-Terminus

特性

Our **Abpromise guarantee** covers the use of **ab163377** in the following tested applications.

The application notes include recommended starting dilutions; optimal dilutions/concentrations should be determined by the end user.

アプリケーション Western blot

ELISA

製品の状態 Liquid

備考

前処理および保存

保存方法および安定性 Shipped on dry ice. Upon delivery aliquot and store at -80°C. Avoid freeze / thaw cycles.

pH: 8.00

Constituents: 0.31% Glutathione, 0.79% Tris HCl

関連情報

機能 N6-methyltransferase that methylates adenosine residues of some mRNAs. N6-methyladenosine (m6A), which is present at internal sites of some mRNAs, may play a role in the efficiency of mRNA splicing, transport or translation.

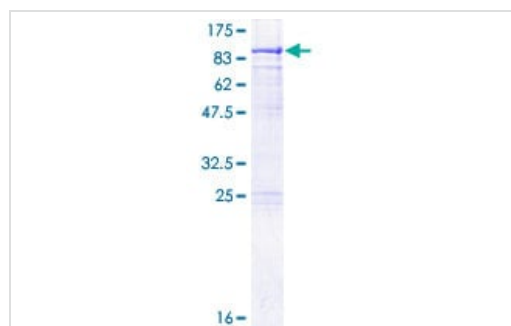
組織特異性 Widely expressed at low level. Expressed in spleen, thymus, prostate, testis, ovary, small intestine, colon and peripheral blood leukocytes.

配列類似性 Belongs to the MT-A70-like family.

翻訳後修飾 Phosphorylated upon DNA damage, probably by ATM or ATR.

細胞内局在 Nucleus speckle. Colocalizes with speckles in interphase nuclei. Suggesting that it may be associated with nuclear pre-mRNA splicing components.

画像



ab163377 on a 12.5% SDS-PAGE stained with Coomassie Blue.

SDS-PAGE - Recombinant Human METTL3 protein
(ab163377)

Please note: All products are "FOR RESEARCH USE ONLY. NOT FOR USE IN DIAGNOSTIC PROCEDURES"

Our Abpromise to you: Quality guaranteed and expert technical support

- Replacement or refund for products not performing as stated on the datasheet
- Valid for 12 months from date of delivery
- Response to your inquiry within 24 hours

- We provide support in Chinese, English, French, German, Japanese and Spanish
- Extensive multi-media technical resources to help you
- We investigate all quality concerns to ensure our products perform to the highest standards

If the product does not perform as described on this datasheet, we will offer a refund or replacement. For full details of the Abpromise, please visit <https://www.abcam.co.jp/abpromise> or contact our technical team.

Terms and conditions

- Guarantee only valid for products bought direct from Abcam or one of our authorized distributors