

Recombinant Human MEK2 protein ab124543

画像数 1

製品の詳細

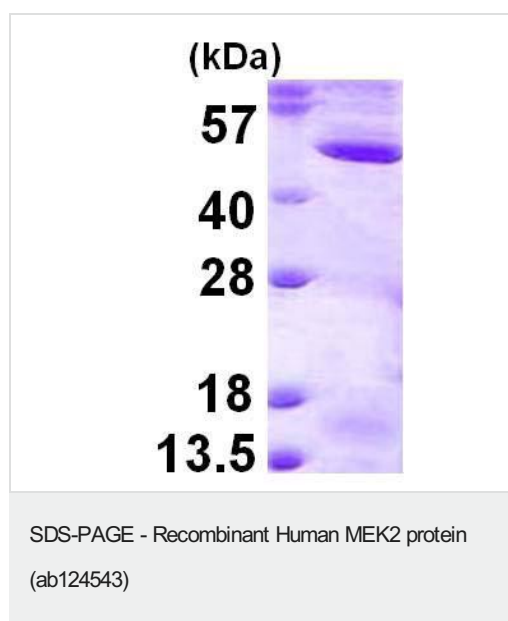
製品名	Recombinant Human MEK2 protein
精製度	> 90 % SDS-PAGE. ab124543 was purified using conventional chromatography techniques.
発現系	Escherichia coli
アクセッション番号	<u>P36507</u>
タンパク質長	Full length protein
Animal free	No
由来	Recombinant
生物種	Human
配列	<p>MGSSHHHHHHSSGLVPRGSHMGSHMLARRKPVLPAITINP TIAEGPSPTS EGASEANLVDLQKKLEELDEQKKRLEAFLTQKAKVGELK DDDFERIS ELGAGNGGVVTKVQHRPSGLIMARKLIHLEIKPAIRNQIIRE LQVLHECN SPYIVGFYGFYSDGEISICMEHMDGGSLDQVLKEAKRIPEE ILGKVSIA VLRGLAYLREKHQIMHRDVKPSNILVNSRGEIKLCDFGVSGQ LIDSMANS FVGTRSYMAPERLQGTHYSVQSDIWSMGLSLVELAVGRYPIIP PPDAKELE AIFGRPVVDGEEGEPHSISPRPRPPGRPVSGHGMDSRPAMAI FELLDYIV NEPPPKLPNGVFTPDFQEFVNKCLIKNPAERADLKMLTNHTF IKRSEVEE VDFAGWLCKTLRLNQPGTPTRTAV</p>
予測される分子量	47 kDa including tags
領域	1 to 400
タグ	His tag N-Terminus

特性

Our **Abpromise guarantee** covers the use of **ab124543** in the following tested applications.

The application notes include recommended starting dilutions; optimal dilutions/concentrations should be determined by the end user.

アプリケーション	SDS-PAGE
	Mass Spectrometry
質量分析	MALDI-TOF
製品の状態	Liquid
前処理および保存	
保存方法および安定性	<p>Shipped at 4°C. Store at +4°C short term (1-2 weeks). Upon delivery aliquot. Store at -20°C or -80°C. Avoid freeze / thaw cycle.</p> <p>pH: 8.00</p> <p>Constituents: 0.32% Tris HCl, 10% Glycerol (glycerin, glycerine), 0.58% Sodium chloride</p>
関連情報	
機能	Catalyzes the concomitant phosphorylation of a threonine and a tyrosine residue in a Thr-Glu-Tyr sequence located in MAP kinases. Activates the ERK1 and ERK2 MAP kinases.
関連疾患	<p>Defects in MAP2K2 are a cause of cardiofaciocutaneous syndrome (CFC syndrome) [MIM:115150]; also known as cardio-facio-cutaneous syndrome. CFC syndrome is characterized by a distinctive facial appearance, heart defects and mental retardation. Heart defects include pulmonic stenosis, atrial septal defects and hypertrophic cardiomyopathy. Some affected individuals present with ectodermal abnormalities such as sparse, friable hair, hyperkeratotic skin lesions and a generalized ichthyosis-like condition. Typical facial features are similar to Noonan syndrome. They include high forehead with bitemporal constriction, hypoplastic supraorbital ridges, downslanting palpebral fissures, a depressed nasal bridge, and posteriorly angulated ears with prominent helices. The inheritance of CFC syndrome is autosomal dominant.</p>
配列類似性	<p>Belongs to the protein kinase superfamily. STE Ser/Thr protein kinase family. MAP kinase kinase subfamily.</p> <p>Contains 1 protein kinase domain.</p>
翻訳後修飾	<p>MAPKK is itself dependent on Ser/Thr phosphorylation for activity catalyzed by MAP kinase kinase kinases (RAF or MEKK1).</p> <p>Acetylation of Ser-222 and Ser-226 by Yersinia yopJ prevents phosphorylation and activation, thus blocking the MAPK signaling pathway.</p>
画像	



15% SDS-PAGE analysis of 3 µg ab124543.

Please note: All products are "FOR RESEARCH USE ONLY. NOT FOR USE IN DIAGNOSTIC PROCEDURES"

Our Abpromise to you: Quality guaranteed and expert technical support

- Replacement or refund for products not performing as stated on the datasheet
- Valid for 12 months from date of delivery
- Response to your inquiry within 24 hours
- We provide support in Chinese, English, French, German, Japanese and Spanish
- Extensive multi-media technical resources to help you
- We investigate all quality concerns to ensure our products perform to the highest standards

If the product does not perform as described on this datasheet, we will offer a refund or replacement. For full details of the Abpromise, please visit <https://www.abcam.co.jp/abpromise> or contact our technical team.

Terms and conditions

- Guarantee only valid for products bought direct from Abcam or one of our authorized distributors