

Recombinant human MEK1 protein ab63209

画像数 5

製品の詳細

製品名	Recombinant human MEK1 protein		
生理活性	Specific activity: 325 nmol/min/mg. Specific activity: 325 nmol/min/mg.		
精製度	> 95 % SDS-PAGE. Affinity purified.		
発現系	Baculovirus infected Sf9 cells		
タンパク質長	Full length protein		
Animal free	No		
由来	Recombinant		
生物種	Human		
配列	> 402 aa MSPILGYWKI KGLVQPTRLL LEYLEEKYEE HLYERDEGDK WRNKKFELGL EFPNLPPYYID 60 GDVKLTQSMA IIRYIADKHN MLGGCPKERA EISMLEGAVL DIRYGVSRIA YSKDFETLKV 120 DFLSKLPEML KMFEDRLCHK TYLNGDHVTH PDFMLYDALD VVLYMDPMCL DAFPKLVCFK 180 KRIEAIPQID KYLKSSKYIA WPLQGWQATF GGGDHPPKSD LVPRGSMPKK KPTPIQLNPA 240 PDGSAVNGTS SAETNLEALQ KKLEEELELDE QQRKRLEAFL TQKQKVSELK DDDFEKISEL 300 GAGNGGVVFK VSHKPSGLVM ARKLIHLEIK PAIRNQIIRE LQVLHECNSP YIVGFYGAFFY 360 SDGEISICME HMDGGSLDQV LKKAGRIPEQ ILGKVSIAVI KGLTYLREKH KIMHRDVKPS 420 NILVNSRGEI KLCDFGVSGQ LIDSMANSFV GTRSYMSPER LQGTHYSVQS DIWSMGLSLV 480 EMAVGRYPIP PPDAKELELM FGCQVEGDAA ETPPRPRTPG RPLSSYGMDS RPPMAIFELL 540 DYIVNEPPPK LPSGVFSLEF QDFVNKCLIK NPAERADLKQ LMVHAFIKRS DAEEVDFAFW 600 LCSTIGLNQP STPTHAAGV 619		
実際の分子量	72 kDa		

特性

Our **Abpromise guarantee** covers the use of **ab63209** in the following tested applications.

The application notes include recommended starting dilutions; optimal dilutions/concentrations should be determined by the end user.

アプリケーション

SDS-PAGE

Functional Studies

製品の状態

Liquid

備考

ab126906 (Human ERK1 full length protein) and **ab64311** (Myelin Basic Protein protein) can be utilized as a substrate for assessing kinase activity

前処理および保存

保存方法および安定性

Shipped on dry ice. Upon delivery aliquot and store at -80°C. Avoid freeze / thaw cycles.

pH: 7.50

Constituents: 0.0038% EGTA, 0.00174% PMSF, 0.00385% DTT, 0.79% Tris HCl, 0.00292% EDTA, 25% Glycerol (glycerin, glycerine), 0.87% Sodium chloride

This product is an active protein and may elicit a biological response in vivo, handle with caution.

関連情報

機能

Catalyzes the concomitant phosphorylation of a threonine and a tyrosine residue in a Thr-Glu-Tyr sequence located in MAP kinases. Activates ERK1 and ERK2 MAP kinases.

組織特異性

Widely expressed, with extremely low levels in brain.

関連疾患

Defects in MAP2K1 are a cause of cardiofaciocutaneous syndrome (CFC syndrome) [MIM:115150]; also known as cardio-facio-cutaneous syndrome. CFC syndrome is characterized by a distinctive facial appearance, heart defects and mental retardation. Heart defects include pulmonic stenosis, atrial septal defects and hypertrophic cardiomyopathy. Some affected individuals present with ectodermal abnormalities such as sparse, friable hair, hyperkeratotic skin lesions and a generalized ichthyosis-like condition. Typical facial features are similar to Noonan syndrome. They include high forehead with bitemporal constriction, hypoplastic supraorbital ridges, downslanting palpebral fissures, a depressed nasal bridge, and posteriorly angulated ears with prominent helices. The inheritance of CFC syndrome is autosomal dominant.

配列類似性

Belongs to the protein kinase superfamily. STE Ser/Thr protein kinase family. MAP kinase kinase subfamily.

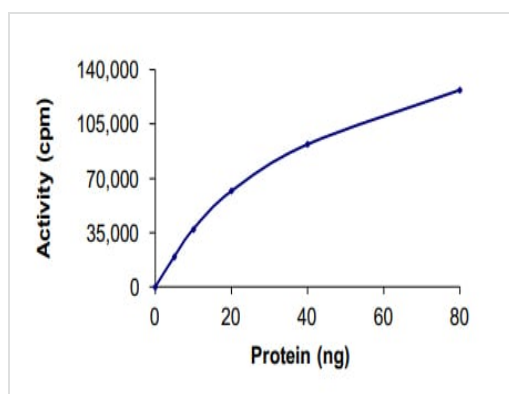
Contains 1 protein kinase domain.

翻訳後修飾

Phosphorylation on Ser/Thr by MAP kinase kinase kinases (RAF or MEKK1) regulates positively the kinase activity.

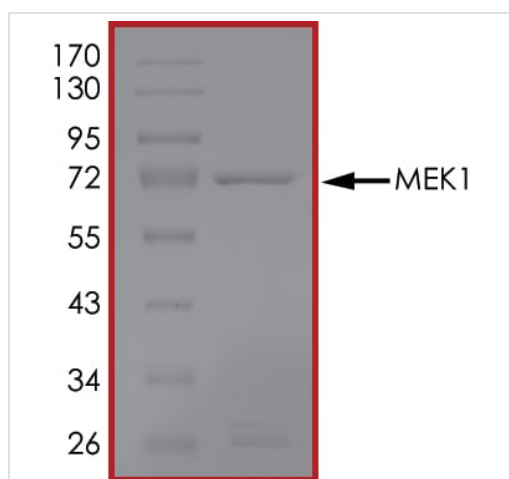
Acetylation by Yersinia yopJ prevents phosphorylation and activation, thus blocking the MAPK signaling pathway.

画像



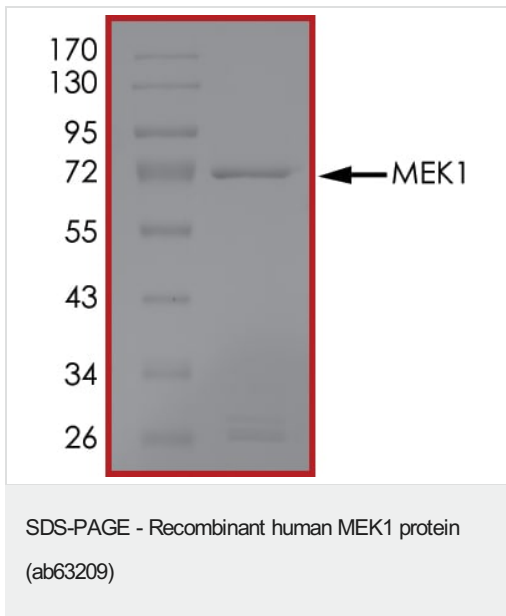
The specific activity of MEK1 (ab63209) was determined to be 280 nmol/min/mg as per activity assay protocol

Functional Studies - Recombinant human MEK1 protein (ab63209)

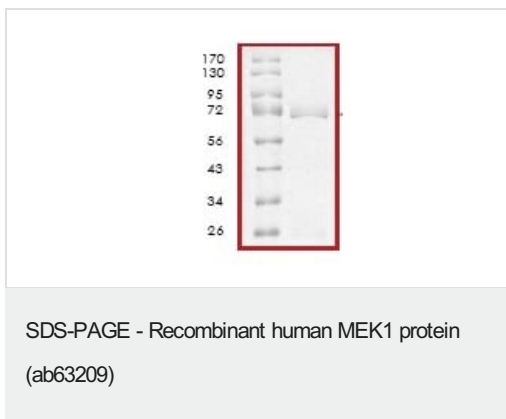


SDS PAGE analysis of ab63209

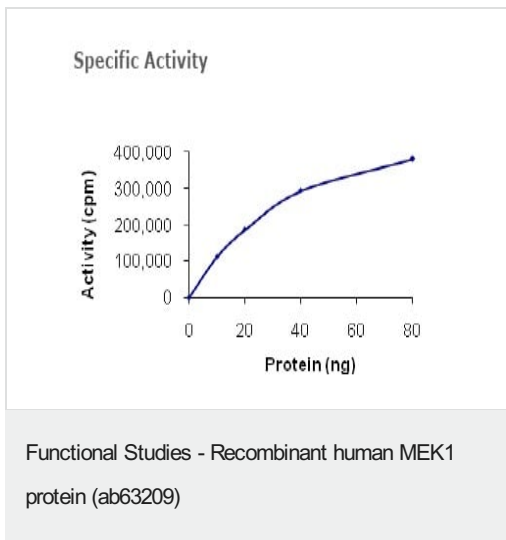
SDS-PAGE - Recombinant human MEK1 protein (ab63209)



SDS PAGE analysis of ab63209



SDS Page analysis of ab63209



Specific activity standard curve of ab63209

Please note: All products are "FOR RESEARCH USE ONLY. NOT FOR USE IN DIAGNOSTIC PROCEDURES"

Our Abpromise to you: Quality guaranteed and expert technical support

- Replacement or refund for products not performing as stated on the datasheet

- Valid for 12 months from date of delivery
- Response to your inquiry within 24 hours
- We provide support in Chinese, English, French, German, Japanese and Spanish
- Extensive multi-media technical resources to help you
- We investigate all quality concerns to ensure our products perform to the highest standards

If the product does not perform as described on this datasheet, we will offer a refund or replacement. For full details of the Abpromise, please visit <https://www.abcam.co.jp/abpromise> or contact our technical team.

Terms and conditions

- Guarantee only valid for products bought direct from Abcam or one of our authorized distributors