

Recombinant Human MEF2D protein ab152520

画像数 1

製品の詳細

製品名	Recombinant Human MEF2D protein
発現系	Wheat germ
アクセッション番号	<u>Q14814-4</u>
タンパク質長	Full length protein
Animal free	No
由来	Recombinant
生物種	Human
配列	MGRKKIQIRITDERNRRVTFTKRKFGLMKKAYELSVLCDCE IALIIFNH SNKLFQYASTDMDKVLLKYTEYNEPHESRTNADIETLRKKG FNGCDSPE PDGEDSLEQSPLLEDKYRRASEELDGLFRRYGSTVPAPNFAM PVTVPVSN QSSLQFSNPSGSLVTPSLVTSSLTDPRLSPQQPALQRNSVS PGLPQRPA SAGAMLGGDLNSANGACSPVGNGYVSARASPGLLPVANGNS LNKVIPAK SPPPPTHSTQLGAPSRKPDLRVITSQAGKGLMHHLNNAQRLG VSQSTHSL TTPVVS VATPSLLSQGLPFSSMPTAYNTDYQLTSAELSSLPA FSSPGGLS LGNVTAWQQPQQPQQPQQPQQPQQPQQPQQPQQPQQPQQ PPQQQSHL VPVLSNLIPGSPLPHVGAALVTTHPHISIKSEPVSPSRER SPAPPPPA VFPAARPEPGDGLSSPAGGSYETGDRDDGRGDFGPTLGLLRP APEPEAEG SAVKRMRLDTWTLK
予測される分子量	82 kDa including tags
領域	1 to 514
タグ	GST tag N-Terminus

特性

Our **Abpromise guarantee** covers the use of **ab152520** in the following tested applications.

The application notes include recommended starting dilutions; optimal dilutions/concentrations should be determined by the end user.

アプリケーション
ELISA
Western blot
SDS-PAGE

製品の状態
Liquid
備考

前処理および保存

保存方法および安定性
Shipped on dry ice. Upon delivery aliquot and store at -80°C. Avoid freeze / thaw cycles.
pH: 8.00
Constituents: 0.31% Glutathione, 0.79% Tris HCl

関連情報

機能
Transcriptional activator which binds specifically to the MEF2 element, 5'-YTA[AT](4)TAR-3', found in numerous muscle-specific, growth factor- and stress-induced genes. Mediates cellular functions not only in skeletal and cardiac muscle development, but also in neuronal differentiation and survival. Plays diverse roles in the control of cell growth, survival and apoptosis via p38 MAPK signaling in muscle-specific and/or growth factor-related transcription. Plays a critical role in the regulation of neuronal apoptosis.

配列類似性
Belongs to the MEF2 family.
Contains 1 MADS-box domain.
Contains 1 Mef2-type DNA-binding domain.

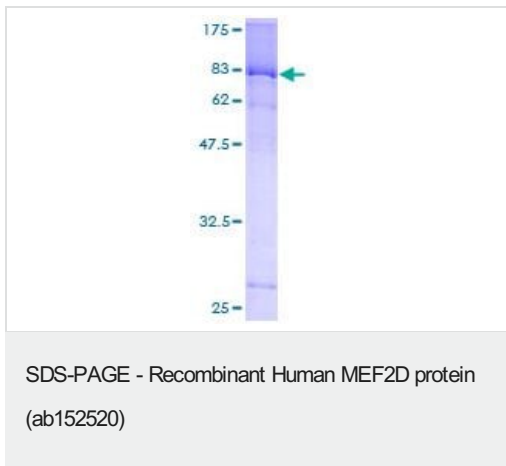
発生段階
Present in myotubes and also in undifferentiated myoblasts.

ドメイン
The beta domain, missing in a number of isoforms, is required for enhancement of transcriptional activity.

翻訳後修飾
Phosphorylated on Ser-444 by CDK5 is required for Lys-439 sumoylation and inhibits transcriptional activity. In neurons, enhanced CDK5 activity induced by neurotoxins promotes caspase 3-mediated cleavage leading to neuron apoptosis. Phosphorylation on Ser-180 can be enhanced by EGF.
Acetylated on Lys-439 by CREBBP. Deacetylated by SIRT1.
Sumoylated on Lys-439 by SUMO2 but not SUMO1; which inhibits transcriptional activity and myogenic activity. Desumoylated by SENP3.
Proteolytically cleaved in cerebellar granule neurons on several sites by caspase 7 following neurotoxicity. Preferentially cleaves the CDK5-mediated hyperphosphorylated form which leads to neuron apoptosis and transcriptional inactivation.

細胞内局在
Nucleus. Translocated by HDAC4 to nuclear dots.

画像



12.5% SDS-PAGE analysis of ab152520 stained with Coomassie Blue.

Please note: All products are "FOR RESEARCH USE ONLY. NOT FOR USE IN DIAGNOSTIC PROCEDURES"

Our Abpromise to you: Quality guaranteed and expert technical support

- Replacement or refund for products not performing as stated on the datasheet
- Valid for 12 months from date of delivery
- Response to your inquiry within 24 hours
- We provide support in Chinese, English, French, German, Japanese and Spanish
- Extensive multi-media technical resources to help you
- We investigate all quality concerns to ensure our products perform to the highest standards

If the product does not perform as described on this datasheet, we will offer a refund or replacement. For full details of the Abpromise, please visit <https://www.abcam.co.jp/abpromise> or contact our technical team.

Terms and conditions

- Guarantee only valid for products bought direct from Abcam or one of our authorized distributors