

# Recombinant Human MCL1 protein ab131682

[2 References](#) [画像数 1](#)

### 製品の詳細

製品名	Recombinant Human MCL1 protein
精製度	> 90 % SDS-PAGE. ab131682 was purified using conventional chromatography techniques.
発現系	Escherichia coli
アクセッション番号	<b><u>Q07820</u></b>
タンパク質長	Protein fragment
Animal free	No
由来	Recombinant
生物種	Human
配列	MGSSHHHHHH SSGLVPRGSH MFGLKRNAVI GLNLYCGGAG LGAGSGGATR PGGRLATEK EASARREIGG GEAGAVIGGS AGASPPSTLT PDSRRVARPP PIGAEVPDVT ATPARLLFFA PTRRAAPLEE MEAPAADAIM SPEEELDGYE PEPLGKRPAV LPLELVGES GNNTSTDGSL PSTPPPAEEE EDELYRQSLE IISRYLREQA TGAKDTPMG RSGATSRKAL ETLRRVGDGV QRNHETAFQG MLRKLDIKNE DDVKLSLRVM IHFVSDGVTN WGRIVTLISF GAFVAKHLKT INQESCIEPL AESITDVLVR TKRDWLVKQR GWDGFVEFFH VEDLEGG
予測される分子量	37 kDa including tags
領域	1 to 327
タグ	His tag N-Terminus

### 特性

Our **Abpromise guarantee** covers the use of **ab131682** in the following tested applications.

The application notes include recommended starting dilutions; optimal dilutions/concentrations should be determined by the end user.

アプリケーション	SDS-PAGE Mass Spectrometry
質量分析	MALDI-TOF

**製品の状態**

Liquid

**前処理および保存****保存方法および安定性**

Shipped at 4°C. Store at +4°C short term (1-2 weeks). Upon delivery aliquot. Store at -20°C or -80°C. Avoid freeze / thaw cycle.

pH: 8.00

Constituents: 0.03% DTT, 0.32% Tris HCl, 20% Glycerol (glycerin, glycerine), 1.17% Sodium chloride

**関連情報****機能**

Involved in the regulation of apoptosis versus cell survival, and in the maintenance of viability but not of proliferation. Mediates its effects by interactions with a number of other regulators of apoptosis. Isoform 1 inhibits apoptosis. Isoform 2 promotes apoptosis.

**配列類似性**

Belongs to the Bcl-2 family.

**翻訳後修飾**

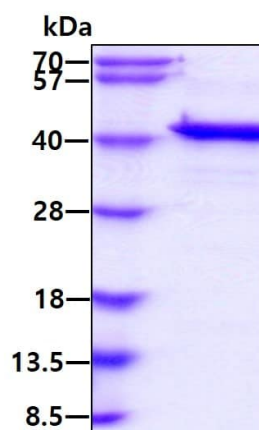
Cleaved by CASP3 during apoptosis. In intact cells cleavage occurs preferentially after Asp-127, yielding a pro-apoptotic 28 kDa C-terminal fragment.

Rapidly degraded in the absence of phosphorylation on Thr-163 in the PEST region.

Phosphorylated on Thr-163. Treatment with taxol or okadaic acid induces phosphorylation on additional sites.

**細胞内局在**

Membrane. Cytoplasm. Mitochondrion. Nucleus > nucleoplasm. Cytoplasmic, associated with mitochondria.

**画像**

SDS-PAGE - Recombinant Human MCL1 protein  
(ab131682)

**Please note:** All products are "FOR RESEARCH USE ONLY. NOT FOR USE IN DIAGNOSTIC PROCEDURES"

## **Our Abpromise to you: Quality guaranteed and expert technical support**

---

- Replacement or refund for products not performing as stated on the datasheet
- Valid for 12 months from date of delivery
- Response to your inquiry within 24 hours
  
- We provide support in Chinese, English, French, German, Japanese and Spanish
- Extensive multi-media technical resources to help you
- We investigate all quality concerns to ensure our products perform to the highest standards

If the product does not perform as described on this datasheet, we will offer a refund or replacement. For full details of the Abpromise, please visit <https://www.abcam.co.jp/abpromise> or contact our technical team.

## **Terms and conditions**

---

- Guarantee only valid for products bought direct from Abcam or one of our authorized distributors