

Product datasheet

Recombinant Human MASH1/Achaete-scute homolog 1 protein ab114273

画像数 1

製品の詳細

製品名	Recombinant Human MASH1/Achaete-scute homolog 1 protein
発現系	Wheat germ
アクセッション番号	P50553
タンパク質長	Protein fragment
Animal free	No
由来	Recombinant
生物種	Human
配列	GFATLREHVPNGAANKKMSKVETLRSAVEYIRALQQLLDEHD AVSAAFQA GVLSPITISPNYSNDLNSMAGSPVSSYSSEDEGSYDPLSPREEQ LLDFTNWF
予測される分子量	37 kDa including tags
領域	137 to 236

特性

Our **Abpromise guarantee** covers the use of **ab114273** in the following tested applications.

The application notes include recommended starting dilutions; optimal dilutions/concentrations should be determined by the end user.

アプリケーション	ELISA SDS-PAGE Western blot
製品の状態	Liquid

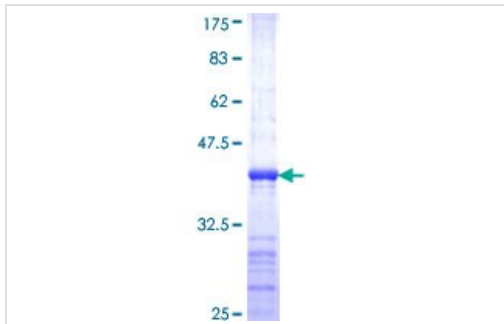
前処理および保存

保存方法および安定性	Shipped on dry ice. Upon delivery aliquot and store at -80°C. Avoid freeze / thaw cycles. pH: 8.00 Constituents: 0.3% Glutathione, 0.79% Tris HCl
------------	---

関連情報

機能	May play a role at early stages of development of specific neural lineages in most regions of the CNS, and of several lineages in the PNS. Essential for the generation of olfactory and autonomic neurons. Activates transcription by binding to the E box (5'-CANNTG-3').
配列類似性	Contains 1 basic helix-loop-helix (bHLH) domain.
細胞内局在	Nucleus.

画像



12.5% SDS-PAGE analysis of ab114273 stained with Coomassie Blue.

SDS-PAGE - Recombinant Human
MASH1/Achaete-scute homolog 1 protein
(ab114273)

Please note: All products are "FOR RESEARCH USE ONLY. NOT FOR USE IN DIAGNOSTIC PROCEDURES"

Our Abpromise to you: Quality guaranteed and expert technical support

- Replacement or refund for products not performing as stated on the datasheet
- Valid for 12 months from date of delivery
- Response to your inquiry within 24 hours

- We provide support in Chinese, English, French, German, Japanese and Spanish
- Extensive multi-media technical resources to help you
- We investigate all quality concerns to ensure our products perform to the highest standards

If the product does not perform as described on this datasheet, we will offer a refund or replacement. For full details of the Abpromise, please visit <https://www.abcam.co.jp/abpromise> or contact our technical team.

Terms and conditions

- Guarantee only valid for products bought direct from Abcam or one of our authorized distributors