

Recombinant human MAP4K1/HPK1 protein ab107953

画像数 5

製品の詳細

製品名	Recombinant human MAP4K1/HPK1 protein
生理活性	The Specific activity of ab107953 was determined to be 125 nmol/min/mg.
精製度	> 75 % SDS-PAGE. Purity was determined to be >75% by densitometry. Affinity purified.
発現系	Baculovirus infected Sf9 cells
アクセッション番号	<u>Q92918</u>
タンパク質長	Protein fragment
Animal free	No
由来	Recombinant
生物種	Human
予測される分子量	65 kDa including tags
領域	1 to 346

特性

Our **Abpromise guarantee** covers the use of **ab107953** in the following tested applications.

The application notes include recommended starting dilutions; optimal dilutions/concentrations should be determined by the end user.

アプリケーション	SDS-PAGE Western blot Functional Studies
製品の状態	Liquid
備考	<u>ab64311</u> (Myelin Basic Protein protein) can be utilized as a substrate for assessing kinase activity This product was previously labelled as MAP4K1

前処理および保存

保存方法および安定性	Shipped on dry ice. Upon delivery aliquot and store at -80°C. Avoid freeze / thaw cycles. pH: 7.50
------------	---

Constituents: 0.307% Glutathione, 0.00174% PMSF, 0.00385% DTT, 0.79% Tris HCl, 0.00292% EDTA, 25% Glycerol (glycerin, glycerine), 0.87% Sodium chloride

This product is an active protein and may elicit a biological response in vivo, handle with caution.

関連情報

機能

May play a role in the response to environmental stress. Appears to act upstream of the JUN N-terminal pathway. May play a role in hematopoietic lineage decisions and growth regulation.

組織特異性

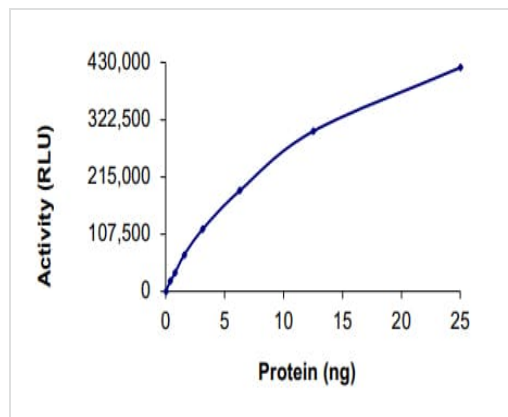
Expressed primarily in hematopoietic organs, including bone marrow, spleen and thymus. Also expressed at very low levels in lung, kidney, mammary glands and small intestine.

配列類似性

Belongs to the protein kinase superfamily. STE Ser/Thr protein kinase family. STE20 subfamily. Contains 1 CNH domain.

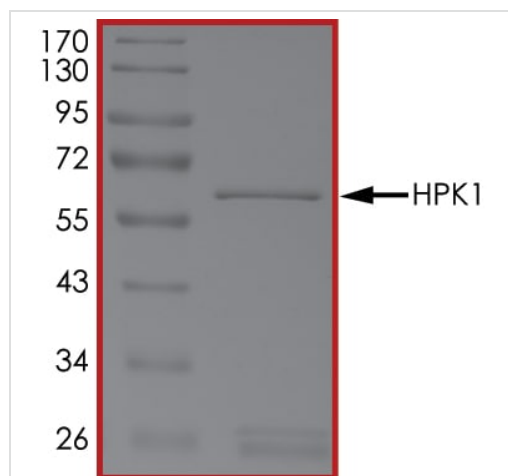
Contains 1 protein kinase domain.

画像



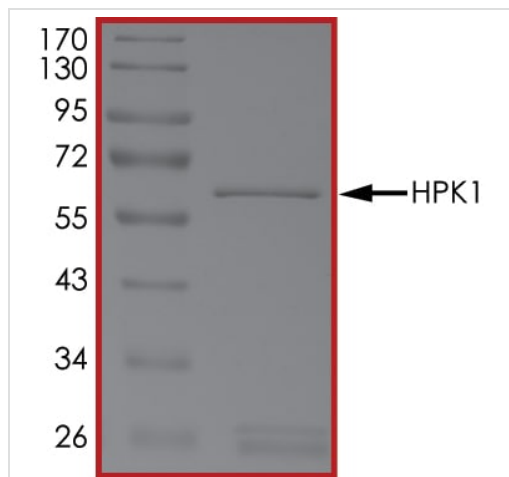
The specific activity of MAP4K1/HPK1 (ab107953) was determined to be 110 nmol/min/mg as per activity assay protocol and was equivalent to 144 nmol/min/mg as per radiometric assay

Functional Studies - Recombinant human
MAP4K1/HPK1 protein (ab107953)



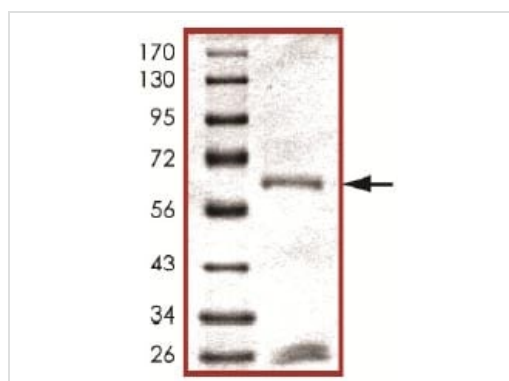
SDS PAGE analysis of ab107953

SDS-PAGE - Recombinant human MAP4K1/HPK1
protein (ab107953)



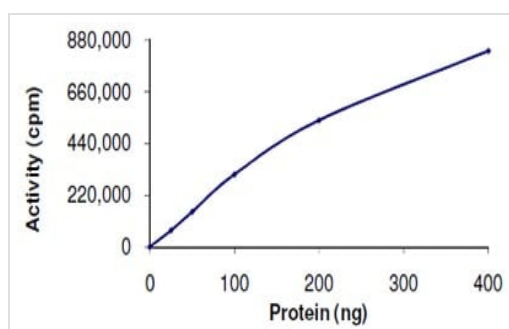
SDS PAGE analysis of ab107953

SDS-PAGE - Recombinant human MAP4K1/HPK1 protein (ab107953)



SDS-PAGE showing ab107953 at approximately 65kDa.

SDS-PAGE - Recombinant human MAP4K1/HPK1 protein (ab107953)



Kinase Assay demonstrating specific activity of ab107953.

Functional Studies - Recombinant human MAP4K1/HPK1 protein (ab107953)

Please note: All products are "FOR RESEARCH USE ONLY. NOT FOR USE IN DIAGNOSTIC PROCEDURES"

Our Abpromise to you: Quality guaranteed and expert technical support

- Replacement or refund for products not performing as stated on the datasheet
- Valid for 12 months from date of delivery
- Response to your inquiry within 24 hours
- We provide support in Chinese, English, French, German, Japanese and Spanish
- Extensive multi-media technical resources to help you
- We investigate all quality concerns to ensure our products perform to the highest standards

If the product does not perform as described on this datasheet, we will offer a refund or replacement. For full details of the Abpromise, please visit <https://www.abcam.co.jp/abpromise> or contact our technical team.

Terms and conditions

- Guarantee only valid for products bought direct from Abcam or one of our authorized distributors