

Recombinant human MAP3K1 protein ab104027

画像数 5

製品の詳細

| | |
|-------------|--|
| 製品名 | Recombinant human MAP3K1 protein |
| 生理活性 | The Specific activity of ab104027 was determined to be 820 nmol/min/mg. |
| 精製度 | > 75 % SDS-PAGE. Purity was determined to be >75% by densitometry. Affinity purified. |
| 発現系 | Baculovirus infected Sf9 cells |
| アクセッション番号 | <u>Q13233</u> |
| タンパク質長 | Protein fragment |
| Animal free | No |
| 由来 | Recombinant |
| 生物種 | Human |
| 予測される分子量 | 155 kDa including tags |
| 領域 | 664 to 1512 |

特性

Our **Abpromise guarantee** covers the use of **ab104027** in the following tested applications.

The application notes include recommended starting dilutions; optimal dilutions/concentrations should be determined by the end user.

| | |
|----------|--|
| アプリケーション | SDS-PAGE Functional Studies |
| 製品の状態 | Liquid |
| 備考 | <u>ab126919</u> (Human MEK1 full length protein), <u>ab126906</u> (Human ERK1 full length protein) and <u>ab64311</u> (Myelin Basic Protein protein) can be utilized as a substrate for assessing kinase activity |

This product was previously labelled as MEKK1

Abcam has not and does not intend to apply for the REACH Authorisation of customers' uses of products that contain European Authorisation list (Annex XIV) substances.
It is the responsibility of our customers to check the necessity of application of REACH Authorisation, and any other relevant authorisations, for their intended uses.

前処理および保存

保存方法および安定性

Shipped on dry ice. Upon delivery aliquot and store at -80°C. Avoid freeze / thaw cycles.

pH: 7.50

Constituents: 0.307% Glutathione, 0.01% Triton-X-100, 0.00174% PMSF, 0.00385% DTT, 0.79% Tris HCl, 0.00292% EDTA, 25% Glycerol (glycerin, glycerine), 0.87% Sodium chloride

This product is an active protein and may elicit a biological response in vivo, handle with caution.

関連情報

機能

Component of a protein kinase signal transduction cascade. Activates the ERK and JNK kinase pathways by phosphorylation of MAP2K1 and MAP2K4. Activates CHUK and IKBKB, the central protein kinases of the NF-kappa-B pathway.

配列類似性

Belongs to the protein kinase superfamily. STE Ser/Thr protein kinase family. MAP kinase kinase kinase subfamily.

Contains 1 protein kinase domain.

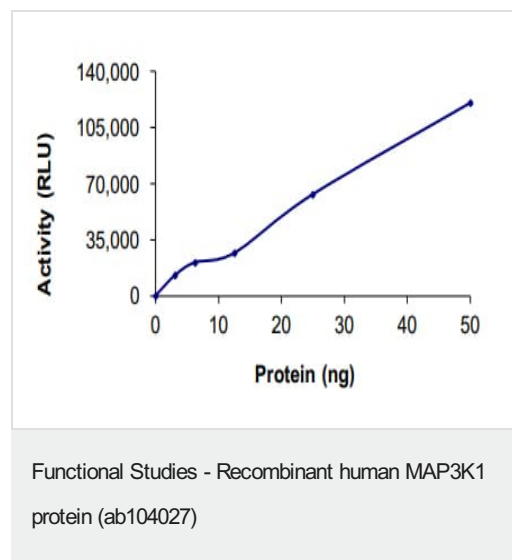
Contains 1 RING-type zinc finger.

Contains 1 SWIM-type zinc finger.

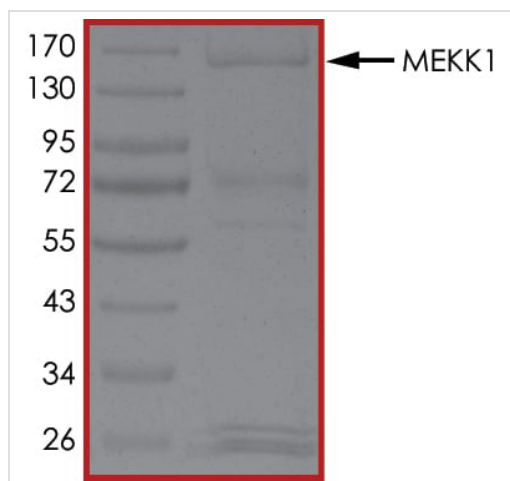
翻訳後修飾

Autophosphorylated.

画像

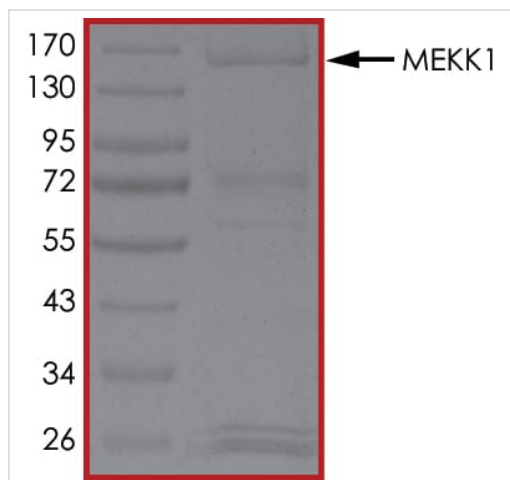


The specific activity of MAP3K1 (ab104027) was determined to be 8.5 nmol/min/mg as per activity assay protocol and was equivalent to 820 nmol/min/mg as per radiometric assay



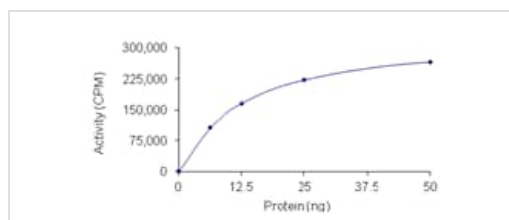
SDS PAGE analysis of ab104027

SDS-PAGE - Recombinant human MAP3K1 protein
(ab104027)



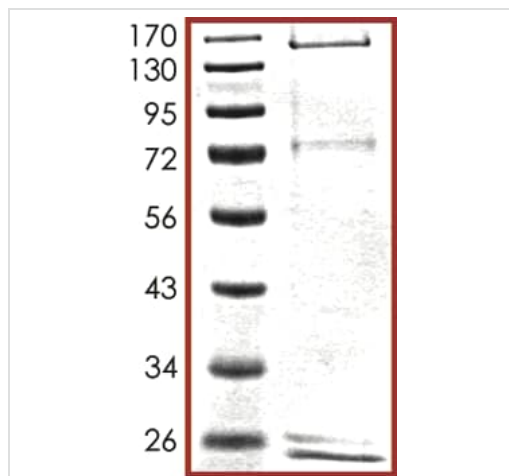
SDS PAGE analysis of ab104027

SDS-PAGE - Recombinant human MAP3K1 protein
(ab104027)



Kinase Assay demonstrating specific activity of ab104027.

Functional Studies - Recombinant human MAP3K1 protein (ab104027)



SDS-PAGE showing ab104027 at approximately 155kDa.

SDS-PAGE - Recombinant human MAP3K1 protein (ab104027)

Please note: All products are "FOR RESEARCH USE ONLY. NOT FOR USE IN DIAGNOSTIC PROCEDURES"

Our Abpromise to you: Quality guaranteed and expert technical support

- Replacement or refund for products not performing as stated on the datasheet
- Valid for 12 months from date of delivery
- Response to your inquiry within 24 hours
- We provide support in Chinese, English, French, German, Japanese and Spanish
- Extensive multi-media technical resources to help you
- We investigate all quality concerns to ensure our products perform to the highest standards

If the product does not perform as described on this datasheet, we will offer a refund or replacement. For full details of the Abpromise, please visit <https://www.abcam.co.jp/abpromise> or contact our technical team.

Terms and conditions

- Guarantee only valid for products bought direct from Abcam or one of our authorized distributors