

Recombinant Human LKB1 protein ab119736

1 References [画像数 1](#)

製品の詳細

製品名	Recombinant Human LKB1 protein
精製度	> 90 % SDS-PAGE. The purity was determined to be 90% by densitometry. Affinity purified.
発現系	Baculovirus infected Sf9 cells
アクセッション番号	<u>Q15831</u>
タンパク質長	Full length protein
Animal free	No
由来	Recombinant
生物種	Human
予測される分子量	85 kDa including tags
領域	1 to 433

特性

Our **Abpromise guarantee** covers the use of **ab119736** in the following tested applications.

The application notes include recommended starting dilutions; optimal dilutions/concentrations should be determined by the end user.

アプリケーション	Western blot
	SDS-PAGE

製品の状態	Liquid
-------	--------

前処理および保存

保存方法および安定性	Shipped on dry ice. Upon delivery aliquot and store at -80°C. Avoid freeze / thaw cycles. pH: 7.50 Constituents: 0.31% Glutathione, 0.002% PMSF, 0.003% DTT, 0.79% Tris HCl, 0.003% EDTA, 25% Glycerol (glycerin, glycerine), 0.29% Sodium chloride
------------	---

関連情報

機能	Essential role in G1 cell cycle arrest. Phosphorylates and activates members of the AMPK-related
----	--

組織特異性

subfamily of protein kinases. Tumor suppressor.

関連疾患

Ubiquitously expressed. Strongest expression in testis and fetal liver.

Defects in STK11 are a cause of Peutz-Jeghers syndrome (PJS) [MIM:175200]. PJS is a rare hereditary disease in which there is predisposition to benign and malignant tumors of many organ systems. PJS is an autosomal dominant disorder characterized by melanocytic macules of the lips, multiple gastrointestinal hamartomatous polyps and an increased risk for various neoplasms, including gastrointestinal cancer.

Defects in STK11 have been associated with testicular tumors (TEST) [MIM:273300]. A common solid malignancy in males. Germ cell tumors of the testis constitute 95% of all testicular neoplasms.

配列類似性

Belongs to the protein kinase superfamily. CAMK Ser/Thr protein kinase family. LKB1 subfamily. Contains 1 protein kinase domain.

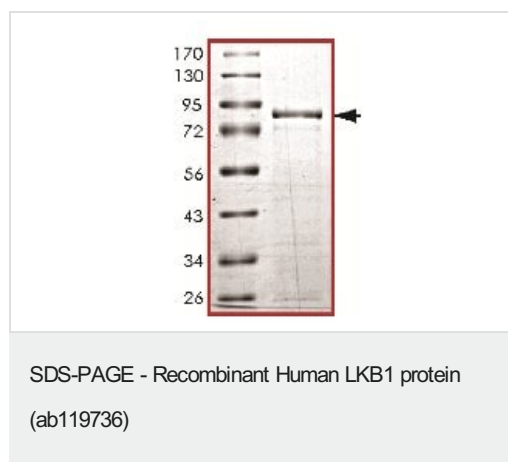
翻訳後修飾

Phosphorylated by a cAMP-dependent protein kinase.

細胞内局在

Nucleus. Cytoplasm. Relocates to the cytoplasm when bound to CAB39 and STRAD or CAB39 and ALS2CR2.

画像



The purity was determined to be >90% by densitometry.

Please note: All products are "FOR RESEARCH USE ONLY. NOT FOR USE IN DIAGNOSTIC PROCEDURES"

Our Abpromise to you: Quality guaranteed and expert technical support

- Replacement or refund for products not performing as stated on the datasheet
- Valid for 12 months from date of delivery
- Response to your inquiry within 24 hours
- We provide support in Chinese, English, French, German, Japanese and Spanish
- Extensive multi-media technical resources to help you
- We investigate all quality concerns to ensure our products perform to the highest standards

If the product does not perform as described on this datasheet, we will offer a refund or replacement. For full details of the Abpromise, please visit <https://www.abcam.co.jp/abpromise> or contact our technical team.

Terms and conditions

- Guarantee only valid for products bought direct from Abcam or one of our authorized distributors