

Recombinant Human LEF1 protein ab132092

画像数 1

製品の詳細

製品名	Recombinant Human LEF1 protein
発現系	Wheat germ
アクセッション番号	Q9UJU2
タンパク質長	Full length protein
Animal free	No
由来	Recombinant
生物種	Human
配列	MPQLSGGGGGGGDPELCATDEMIPFKDEGDPQKEKIFAEIS HPEEGDL ADIKSSLVNESEIIPASNGHEVARQAQTSQEPYHDKAREHPD DGKHPDGG LYNKGPSYSSYSGYIMPMNNDPYMSNGSLSPPIPRTSNKV PVVQPSHA VHPLTPLITYSDEHFSPGSHPSHIPSDVNSKQGMSRHPPAPD IPTFYPLS PGGVGQITPPLGWQQPVYPITGGFRQPYPSSLSVDTSMSRF SHHMIPGP PGPHTTGIPHPAIVTPQVKQEHPTDSDLMHVKPQHEQRKEQ EPKRPHIK KPLNAFMLYMKEMRANVVAECTLKESAAINQILGRRWHALSR EEQAKYYE LARKERQLHMQLYPGWSARDNYGKKKKRKRREKLQESASGTGP RMTAAYI
予測される分子量	70 kDa including tags
領域	1 to 399
タグ	GST tag N-Terminus

特性

Our **Abpromise guarantee** covers the use of **ab132092** in the following tested applications.

The application notes include recommended starting dilutions; optimal dilutions/concentrations should be determined by the end user.

アプリケーション Western blot

SDS-PAGE

ELISA

製品の状態

Liquid

前処理および保存

保存方法および安定性

Shipped on dry ice. Upon delivery aliquot and store at -80°C. Avoid freeze / thaw cycles.

pH: 8.00

Constituents: 0.31% Glutathione, 0.79% Tris HCl

関連情報

機能

Participates in the Wnt signaling pathway. Activates transcription of target genes in the presence of CTNNB1 and EP300. May play a role in hair cell differentiation and follicle morphogenesis. TLE1, TLE2, TLE3 and TLE4 repress transactivation mediated by LEF1 and CTNNB1. Regulates T-cell receptor alpha enhancer function. Binds DNA in a sequence-specific manner. PIAG antagonizes both Wnt-dependent and Wnt-independent activation by LEF1 (By similarity). Isoform 3 lacks the CTNNB1 interaction domain and may be an antagonist for Wnt signaling. Isoform 5 transcriptionally activates the fibronectin promoter, binds to and represses transcription from the E-cadherin promoter in a CTNNB1-independent manner, and is involved in reducing cellular aggregation and increasing cell migration of pancreatic cancer cells. Isoform 1 transcriptionally activates MYC and CCND1 expression and enhances proliferation of pancreatic tumor cells.

組織特異性

Detected in thymus. Not detected in normal colon, but highly expressed in colon cancer biopsies and colon cancer cell lines. Expressed in several pancreatic tumors and weakly expressed in normal pancreatic tissue. Isoforms 1 and 5 are detected in several pancreatic cell lines.

配列類似性

Belongs to the TCF/LEF family.

Contains 1 HMG box DNA-binding domain.

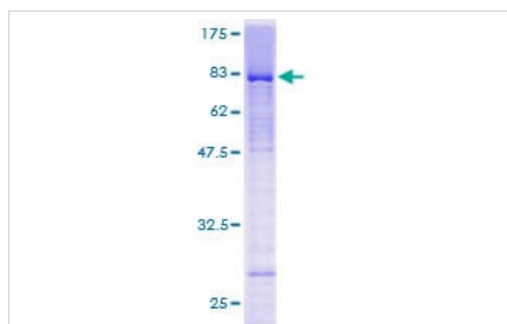
ドメイン

Proline-rich and acidic regions are implicated in the activation functions of RNA polymerase II transcription factors.

細胞内局在

Nucleus. Found in nuclear bodies upon PIASG binding.

画像



12.5% SDS-PAGE analysis of ab132092 stained with Coomassie Blue.

SDS-PAGE - Recombinant Human LEF1 protein
(ab132092)

Please note: All products are "FOR RESEARCH USE ONLY. NOT FOR USE IN DIAGNOSTIC PROCEDURES"

Our Abpromise to you: Quality guaranteed and expert technical support

- Replacement or refund for products not performing as stated on the datasheet
- Valid for 12 months from date of delivery
- Response to your inquiry within 24 hours

- We provide support in Chinese, English, French, German, Japanese and Spanish
- Extensive multi-media technical resources to help you
- We investigate all quality concerns to ensure our products perform to the highest standards

If the product does not perform as described on this datasheet, we will offer a refund or replacement. For full details of the Abpromise, please visit <https://www.abcam.co.jp/abpromise> or contact our technical team.

Terms and conditions

- Guarantee only valid for products bought direct from Abcam or one of our authorized distributors