

Recombinant Human JAM-C protein ab134536

画像数 1

製品の詳細

製品名	Recombinant Human JAM-C protein
精製度	> 90 % SDS-PAGE. ab134536 is purified using conventional chromatography techniques.
発現系	Escherichia coli
アクセッション番号	<u>Q9BX67</u>
タンパク質長	Protein fragment
Animal free	No
由来	Recombinant
生物種	Human
配列	MGSSHHHHHSSGLVPRGSHMGSMVNLKSSNRTPVVQEFESV ELSCIITD SQTSDPRIEWKKIQDEQTTYVFFDNKIQGDLAGRAEILGKTS LKIWNVTR RDSALYRCEVVARNDRKEIDEIVIELTVQVKPVTPVCRVPA VPVGKMAT LHCQESGHRPHYSWYRNDVPLPTDSRANPRFRNSSFHLNS ETGTLVFT AVHKDDSGQYYCIASNDAGSARCEEQEMEVDLN
予測される分子量	26 kDa including tags
領域	32 to 241
タグ	His tag N-Terminus

特性

Our **Abpromise guarantee** covers the use of **ab134536** in the following tested applications.

The application notes include recommended starting dilutions; optimal dilutions/concentrations should be determined by the end user.

アプリケーション	Mass Spectrometry SDS-PAGE
質量分析	MALDI-TOF
製品の状態	Liquid
備考	Previously labelled as Junctional Adhesion Molecule C.

前処理および保存

保存方法および安定性

Shipped at 4°C. Store at +4°C short term (1-2 weeks). Upon delivery aliquot. Store at -20°C or -80°C. Avoid freeze / thaw cycle.

pH: 8.00

Constituents: 0.08% DTT, 0.32% Tris HCl, 0.06% EDTA, 50% Glycerol (glycerin, glycerine), 1.17% Sodium chloride

関連情報

機能

Participates in cell-cell adhesion. It is a counterreceptor for ITGAM, mediating leukocyte-platelet interactions and is involved in the regulation of transepithelial migration of polymorphonuclear neutrophils (PMN). The soluble form is a mediator of angiogenesis.

組織特異性

Highest expression in placenta, brain and kidney. Significant expression is detected on platelets. Expressed in intestinal mucosa cells. Expressed in the vascular endothelium. Found in serum (at protein level). Also detected in the synovial fluid of patients with rheumatoid arthritis, psoriatic arthritis or osteoarthritis (at protein level).

関連疾患

Defects in JAM3 are the cause of hemorrhagic destruction of the brain with subependymal calcification and cataracts (HDBSCC) [MIM:613730]. A syndrome characterized by congenital cataracts and severe brain abnormalities apparently resulting from hemorrhagic destruction of the brain tissue, including the cerebral white matter and basal ganglia. Patients manifest profound developmental delay, and other neurologic features included seizures, spasticity, and hyperreflexia. Brain imaging shows multifocal intraparenchymal hemorrhage with associated liquefaction and massive cystic degeneration, and calcification in the subependymal region and in brain tissue.

配列類似性

Belongs to the immunoglobulin superfamily.

Contains 1 Ig-like C2-type (immunoglobulin-like) domain.

Contains 1 Ig-like V-type (immunoglobulin-like) domain.

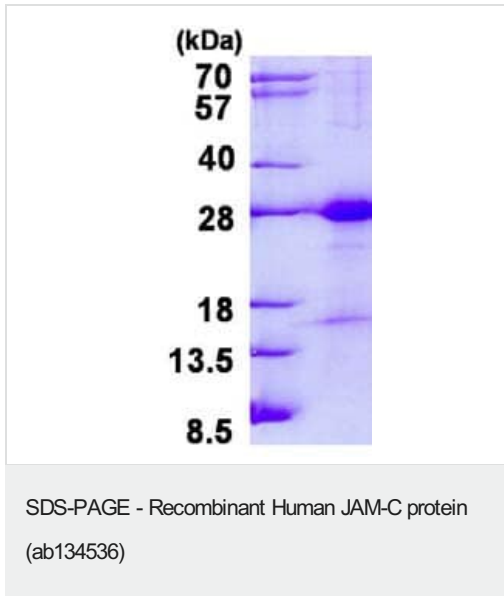
翻訳後修飾

Proteolytically cleaved from endothelial cells surface into a soluble form by ADAM10 and ADAM17; the release of soluble JAM3 is increased by proinflammatory factors.

細胞内局在

Cell membrane. Cell junction > desmosome. Secreted > extracellular space. In epithelial cells, it is expressed at desmosomes but not at tight junctions. Localizes at the cell surface of endothelial cells; treatment of endothelial cells with vascular endothelial growth factor stimulates recruitment of JAM3 to cell-cell contacts.

画像



15% SDS-PAGE analysis of 3 µg ab134536.

Please note: All products are "FOR RESEARCH USE ONLY. NOT FOR USE IN DIAGNOSTIC PROCEDURES"

Our Abpromise to you: Quality guaranteed and expert technical support

- Replacement or refund for products not performing as stated on the datasheet
- Valid for 12 months from date of delivery
- Response to your inquiry within 24 hours
- We provide support in Chinese, English, French, German, Japanese and Spanish
- Extensive multi-media technical resources to help you
- We investigate all quality concerns to ensure our products perform to the highest standards

If the product does not perform as described on this datasheet, we will offer a refund or replacement. For full details of the Abpromise, please visit <https://www.abcam.co.jp/abpromise> or contact our technical team.

Terms and conditions

- Guarantee only valid for products bought direct from Abcam or one of our authorized distributors