

Recombinant Human ITIH1/SHAP protein ab114721

画像数 1

製品の詳細

製品名	Recombinant Human ITIH1/SHAP protein
発現系	Wheat germ
アクセッション番号	<u>P19827</u>
タンパク質長	Full length protein
Animal free	No
由来	Recombinant
生物種	Human
配列	MDGAMGPRGLLLCMYLVSLLLILQAMPALGSATGRSKSSEKRQ AVDTAVDG VFIRSLKVNCKVTSRFAHYVVTSQVVNTANEAREVAFDLEIP KTAFISDF AVTADGNAFIGDIKDKVTAWKQYRKAASGENAGLVRASGRT MEQFTIHL TVNPQSKVTFQLTYEEVLKRNHMQYEIVIKVKPKQLVHHFEI DVDIFEPQ GISKLDAQASFLPKELAAQTIKKSFSGKKGHVLFRTVTSQQQ SCPTCSTS LLNGHFVKVTDVSRDKICDLLVANNHFAHFFAPQNLTMNKN VVFVIDIS GSMRGQKVKQTKKALLKILGDMQPGDYFDLVLFGTRVQSWKG SLVQASEA NLQAAQDFVRGFSLDEATNLNGLLRGIEILNQVQESLPELS NHASILIM LTDGDPTEGVTDRSQILKNVRNAIRGRFPLYNLGFGHNVDFN FLEVMSME NNGRAQRIYEDHDATQQLQGFYSQVAKPLLVDVDLQYPQDAV LALTQNH KQYYEGSEIVVAGRIADNKQSSFKADVQAHGEGQEFSTCLV DEEEMKKL LRERGHMLENHVERLWAYLTIQELLAKRMKVDREVRANLSSQ ALRMSLDY GFVTPLTSMIRGMADQDGLKPTIDKPSSEDSPPLEMLGPRRT FVLSALQP SPTHSSNTQRLPDRVTGVDTDPHFIIHVPQKEDTLFCNINE EPGVILSL

VQDPNTGFSVNGQLIGNKARSPGQHDGTYFGRLGIANPATDF
QLEVTPQN
ITLNPGFGGPVFSWRDQAVLRQDGVVVTINKKRNLVSVDDG
GTFEVVLH
RVWKGSSVHQDFLGFYVLDSHRMSARTHGLLGQFFHPIGFEV
SDIHPGSD
PTKPDATMVVRNRRLTVTRGLQKDYSKDPWHGAEVSCWFIHN
NGAGLIDG AYTDYIVPDIF

予測される分子量 126 kDa including tags
領域 1 to 911

特性

Our **Abpromise guarantee** covers the use of **ab114721** in the following tested applications.

The application notes include recommended starting dilutions; optimal dilutions/concentrations should be determined by the end user.

アプリケーション ELISA
SDS-PAGE
Western blot

製品の状態 Liquid

備考 This product was previously labelled as ITIH1.

前処理および保存

保存方法および安定性 Shipped on dry ice. Upon delivery aliquot and store at -80°C. Avoid freeze / thaw cycles.
pH: 8.00
Constituents: 0.3% Glutathione, 0.79% Tris HCl

関連情報

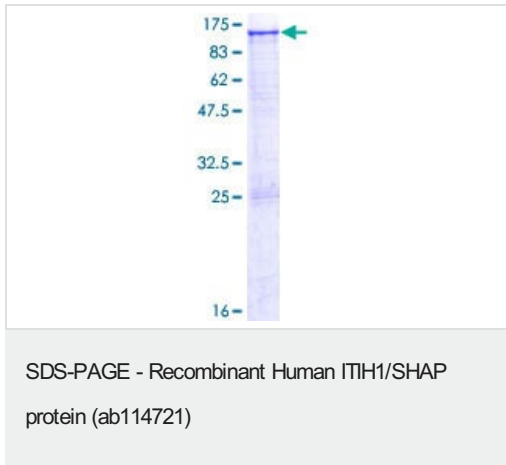
機能 May act as a carrier of hyaluronan in serum or as a binding protein between hyaluronan and other matrix protein, including those on cell surfaces in tissues to regulate the localization, synthesis and degradation of hyaluronan which are essential to cells undergoing biological processes.
Contains a potential peptide which could stimulate a broad spectrum of phagocytotic cells.

配列類似性 Belongs to the ITIH family.
Contains 1 VIT domain.
Contains 1 VWFA domain.

翻訳後修飾 Heavy chains are linked to bikunin via chondroitin 4-sulfate esterified to the alpha-carboxyl of the C-terminal aspartate after propeptide cleavage.
The S-linked glycan is composed of two 6-carbon sugars, possibly Glc or Gal.

細胞内局在 Secreted.

画像



12.5% SDS-PAGE Stained with Coomassie Blue

Please note: All products are "FOR RESEARCH USE ONLY. NOT FOR USE IN DIAGNOSTIC PROCEDURES"

Our Abpromise to you: Quality guaranteed and expert technical support

- Replacement or refund for products not performing as stated on the datasheet
- Valid for 12 months from date of delivery
- Response to your inquiry within 24 hours
- We provide support in Chinese, English, French, German, Japanese and Spanish
- Extensive multi-media technical resources to help you
- We investigate all quality concerns to ensure our products perform to the highest standards

If the product does not perform as described on this datasheet, we will offer a refund or replacement. For full details of the Abpromise, please visit <https://www.abcam.co.jp/abpromise> or contact our technical team.

Terms and conditions

- Guarantee only valid for products bought direct from Abcam or one of our authorized distributors