

Recombinant Human IP3 receptor protein ab158779

画像数 1

製品の詳細

|             |   |
|-------------|---|
| 製品名         | Recombinant Human IP3 receptor protein  |
| 発現系         | Wheat germ  |
| タンパク質長      | Protein fragment  |
| Animal free | No  |
| 由来          | Recombinant   |
| 生物種         | Human   |
| 配列          | EHTCETLLMCIVTVLSHGLRSGGGVGDVLRKPSKEEPLFAAR<br>VIYDLLFF<br>FMVIIIVLNLIFGVIIDTFADLRSEKQKKEEILKTTCFICGL<br>ERDKFDNK TVTFEEHI |
| 領域          | 2470 to 2577  |
| タグ          | GST tag N-Terminus  |

特性

Our **Abpromise guarantee** covers the use of **ab158779** in the following tested applications.

The application notes include recommended starting dilutions; optimal dilutions/concentrations should be determined by the end user.

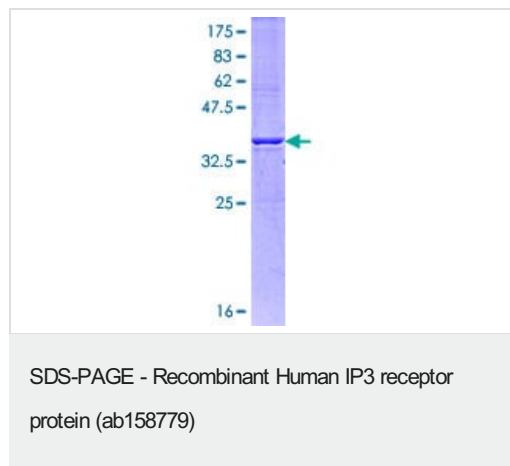
|          |              |
|----------|--------------|
| アプリケーション | Western blot |
|          | ELISA        |
| 製品の状態    | Liquid       |
| 備考       |              |

前処理および保存

|            |  |
|------------|--|
| 保存方法および安定性 | Shipped on dry ice. Upon delivery aliquot and store at -80°C. Avoid freeze / thaw cycles.<br>pH: 8.00<br>Constituents: 0.31% Glutathione, 0.79% Tris HCl |
|------------|--|

|       |   |
|-------|---|
| 機能    | Intracellular channel that mediates calcium release from the endoplasmic reticulum following stimulation by inositol 1,4,5-trisphosphate.   |
| 組織特異性 | Widely expressed.   |
| 関連疾患  | Defects in ITPR1 are the cause of spinocerebellar ataxia type 15 (SCA15) (SCA15) [MIM:606658]. Spinocerebellar ataxia is a clinically and genetically heterogeneous group of cerebellar disorders. Patients show progressive incoordination of gait and often poor coordination of hands, speech and eye movements, due to degeneration of the cerebellum with variable involvement of the brainstem and spinal cord. SCA15 is an autosomal dominant cerebellar ataxia (ADCA). It is very slow progressing form with a wide range of onset, ranging from childhood to adult. Most patients remain ambulatory. |
| 配列類似性 | Belongs to the InsP3 receptor family.<br>Contains 5 MIR domains.  |
| ドメイン  | The receptor contains a calcium channel in its C-terminal extremity. Its large N-terminal cytoplasmic region has the ligand-binding site in the N-terminus and modulatory sites in the middle portion immediately upstream of the channel region.   |
| 翻訳後修飾 | Phosphorylated by cAMP kinase. Phosphorylation prevents the ligand-induced opening of the calcium channels.<br>Phosphorylated on tyrosine residues.   |
| 細胞内局在 | Endoplasmic reticulum membrane.   |

## 画像



ab158779 on a 12.5% SDS-PAGE stained with Coomassie Blue.

**Please note:** All products are "FOR RESEARCH USE ONLY. NOT FOR USE IN DIAGNOSTIC PROCEDURES"

## Our Abpromise to you: Quality guaranteed and expert technical support

- Replacement or refund for products not performing as stated on the datasheet
- Valid for 12 months from date of delivery
- Response to your inquiry within 24 hours
- We provide support in Chinese, English, French, German, Japanese and Spanish
- Extensive multi-media technical resources to help you

- We investigate all quality concerns to ensure our products perform to the highest standards

If the product does not perform as described on this datasheet, we will offer a refund or replacement. For full details of the Abpromise, please visit <https://www.abcam.co.jp/abpromise> or contact our technical team.

### **Terms and conditions**

---

- Guarantee only valid for products bought direct from Abcam or one of our authorized distributors