

Recombinant Human Integrin beta 7 protein ab114397

画像数 1

製品の詳細

製品名	Recombinant Human Integrin beta 7 protein
発現系	Wheat germ
アクセッション番号	<u>P26010</u>
タンパク質長	Full length protein
Animal free	No
由来	Recombinant
生物種	Human
配列	MVALPMVLVLLLVL SRGESELD AKIPSTGDATEWRNPHLSML GSCQPAPS CQKCILSHPSCAWCKQLNFTASGEAEARRCARREELLARGCP LEELEEPR GQQEVLQDQPLSQGARGEGATQLAPQRRVTLRPGEPQQLQV RFLRAEGY PVDLYYLMDSL SYSMKDDL ERVRQLGHALLVRLQEVTHSVRIG FGSFVDKT VLPFVSTVPSKLRHPCPTRLERCQSPFSFHHVLSLTGDAQAF EREVGRQS VSGNLDSPEGGFDAILQAALCQEQIGWRNVSRLLVFTSDDTF HTAGDGKL GGIFMPSDGHCHLDSNGLYSRSTEFDYPSVGQVAQALSAANI QPIFAVTS AALPVYQELSKLIPKSAVGELSEDSSNVVQLIMDAYNSLSST VTLEHSSL PPGVHISYESQCEGPEKREGKAEDRGQCNHVRINQTVTFWVS LQATHCLP EPHLLRLRALGFSEELIVELHTLDCNCSDTQPQAPHCS DGQ GHLQCGVC SCAPGRLGRLCECSVAELSSPDLESGCRAPNGTGPLCSGKGH CQCGRCSC SGQSSGHLCEDDASCERHEGILCGGFGRQCQGVCHCHANRT GRACECSG DMDSCISPEGGLCSGHGRCKCNRCQCLDGYYGALCDQCPGCK TPCERHRD CAECGAFRTGPLATNCSTACAHTNVTLALAPILDDGWCKERT LDNQLFFF

LVEDDARGTVVLRVVRPQEKGADHTQAIIVLGCVGGIVAVGLGL
VLAYRLSV
EIIYDRREYSRFEKEQQQLNWKQDSNPLYKSAITTTINPRFQE
ADSPTL

予測される分子量 114 kDa including tags
領域 1 to 798

特性

Our **Abpromise guarantee** covers the use of **ab114397** in the following tested applications.

The application notes include recommended starting dilutions; optimal dilutions/concentrations should be determined by the end user.

アプリケーション SDS-PAGE
Western blot
ELISA

製品の状態 Liquid

前処理および保存

保存方法および安定性 Shipped on dry ice. Upon delivery aliquot and store at -80°C. Avoid freeze / thaw cycles.
pH: 8.00
Constituents: 0.3% Glutathione, 0.79% Tris HCl

関連情報

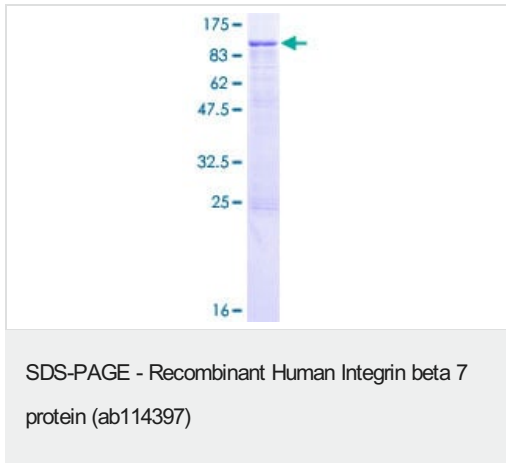
機能 Integrin alpha-4/beta-7 (Peyer patches-specific homing receptor LPAM-1) is an adhesion molecule that mediates lymphocyte migration and homing to gut-associated lymphoid tissue (GALT). Integrin alpha-4/beta-7 interacts with the cell surface adhesion molecules MADCAM1 which is normally expressed by the vascular endothelium of the gastrointestinal tract. Interacts also with VCAM1 and fibronectin, an extracellular matrix component. It recognizes one or more domains within the alternatively spliced CS-1 region of fibronectin. Interactions involves the tripeptide L-D-T in MADCAM1, and L-D-V in fibronectin. Binds to HIV-1 gp120, thereby allowing the virus to enter GALT, which is thought to be the major trigger of AIDS disease. Interaction would involve a tripeptide L-D-I in HIV-1 gp120. Integrin alpha-E/beta-7 (HML-1) is a receptor for E-cadherin.

組織特異性 Expressed in a variety of leukocyte lines.

配列類似性 Belongs to the integrin beta chain family.
Contains 1 VWFA domain.

ドメイン Domain I contains three cation-binding sites: the ligand-integrin-binding site (LIMBS), the metal ion-dependent adhesion site (MIDAS), and the adjacent to MIDAS site (ADMIDAS). In the absence of a ligand or in calcium-dependent binding, only ADMIDAS is occupied. In magnesium-dependent binding all three sites bind metal ions. LIMBS positively modify ligand binding whereas ADMIDAS negatively modify ligand binding.

細胞内局在 Membrane.



ab114397 analysed on a 12.5% SDS-PAGE gel stained with Coomassie Blue.

Please note: All products are "FOR RESEARCH USE ONLY. NOT FOR USE IN DIAGNOSTIC PROCEDURES"

Our Abpromise to you: Quality guaranteed and expert technical support

- Replacement or refund for products not performing as stated on the datasheet
- Valid for 12 months from date of delivery
- Response to your inquiry within 24 hours
- We provide support in Chinese, English, French, German, Japanese and Spanish
- Extensive multi-media technical resources to help you
- We investigate all quality concerns to ensure our products perform to the highest standards

If the product does not perform as described on this datasheet, we will offer a refund or replacement. For full details of the Abpromise, please visit <https://www.abcam.co.jp/abpromise> or contact our technical team.

Terms and conditions

- Guarantee only valid for products bought direct from Abcam or one of our authorized distributors