

# Recombinant human Indoleamine 2, 3-dioxygenase protein (Active) ab219439

画像数 1

### 製品の詳細

製品名	Recombinant human Indoleamine 2, 3-dioxygenase protein (Active)	
生理活性	Specific activity is > 300 pmol/min/ug, and is defined as the amount of enzyme that hydrolyze 1.0 pmole of L-Tryptophan to N-formyl-L-kynurenine per minute at pH 6.5 at 25°C.	
精製度	> 90 % SDS-PAGE. ab219439 was purified by using conventional chromatography techniques.	
エンドトキシン・レベル	< 1.000 Eu/μg	
発現系	Escherichia coli	
アクセッション番号	<b>P14902</b>	
タンパク質長	Full length protein	
Animal free	No	
由来	Recombinant	
生物種	Human	
配列	<p>MGSSHHHHHSSGLVPRGSHMGSMAMENSWTISKEYHIDE            EVGFALPN            PQENLPDFYNDWMFIAKHLPLDIESGQLRERVEKLNMLSIDH            LTDHKSQR            LARLVLCITMAYVWGKGHDVRKVLPRNIAVPYCQLSKKLE            LPPILVYA            DCVLANWKKKDPNKPLTYENMDVLFSDRGDCSKGFFLVSL            VEIAAASA            IKVIPTVFKAMQMQRDTLLKALLEIASCLEKALQVFHQIHD            HVNPKAFF            SVLRIYLSGWKGNPQLSDGLVYEGFWEDPKEFAGGSAGQSSV            FQCFDVLL            GIQQTAGGGHAAQFLQDMRRYMPPAHRNFLCSLESNPSVREF            VLSKGDAG            LREAYDACVKALVSLRSYHLQIVTKYILIPASQQPKENKTSE            DPSKLEAK GTGGTDLMNFLKTVRSTTEKSLLEK</p>	
予測される分子量	48 kDa including tags	
領域	1 to 403	
タグ	His tag N-Terminus	

## 配列の追加情報

(NP\_002155).

## 特性

---

Our **Abpromise guarantee** covers the use of **ab219439** in the following tested applications.

The application notes include recommended starting dilutions; optimal dilutions/concentrations should be determined by the end user.

アプリケーション	SDS-PAGE Mass Spectrometry Functional Studies
質量分析	MALDI-TOF
製品の状態	Liquid

## 前処理および保存

---

### 保存方法および安定性

Shipped at 4°C. Store at +4°C short term (1-2 weeks). Upon delivery aliquot. Store at -20°C or -80°C. Avoid freeze / thaw cycle.

pH: 8.00

Constituents: 0.32% Tris HCl, 0.87% Sodium chloride, 20% Glycerol (glycerin, glycerine), 0.02% DTT

This product is an active protein and may elicit a biological response in vivo, handle with caution.

## 関連情報

---

### 機能

Catalyzes the cleavage of the pyrrol ring of tryptophan and incorporates both atoms of a molecule of oxygen.

### パスウェイ

Amino-acid degradation; L-tryptophan degradation via kynurenine pathway; L-kynurenine from L-tryptophan: step 1/2.

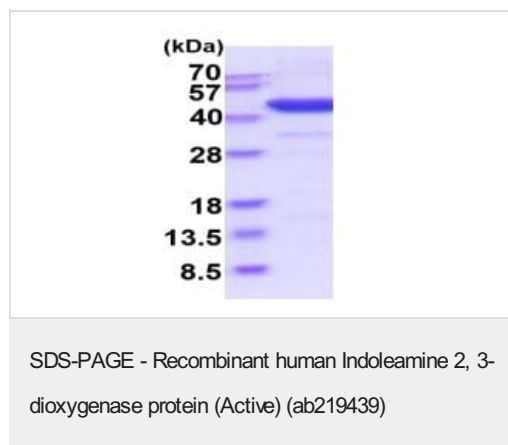
### 配列類似性

Belongs to the indoleamine 2,3-dioxygenase family.

---

## 画像

---



15% SDS-PAGE analysis of ab219439 (3µg).

**Please note:** All products are "FOR RESEARCH USE ONLY. NOT FOR USE IN DIAGNOSTIC PROCEDURES"

### **Our Abpromise to you: Quality guaranteed and expert technical support**

---

- Replacement or refund for products not performing as stated on the datasheet
- Valid for 12 months from date of delivery
- Response to your inquiry within 24 hours
  
- We provide support in Chinese, English, French, German, Japanese and Spanish
- Extensive multi-media technical resources to help you
- We investigate all quality concerns to ensure our products perform to the highest standards

If the product does not perform as described on this datasheet, we will offer a refund or replacement. For full details of the Abpromise, please visit <https://www.abcam.co.jp/abpromise> or contact our technical team.

### **Terms and conditions**

---

- Guarantee only valid for products bought direct from Abcam or one of our authorized distributors