

# Recombinant Human ILF3 protein ab132543

[1 References](#) [画像数 1](#)

### 製品の詳細

製品名	Recombinant Human ILF3 protein
発現系	Wheat germ
アクセッション番号	<b><u>Q12906-2</u></b>
タンパク質長	Full length protein
Animal free	No
由来	Recombinant
生物種	Human
配列	MRPMRIFVNDDRHVMMAKHSSVYPTQEELAVQNMVSHTERAL KAVSDWID EQEKGSSQAESDNMDVPPEDDSKEGAGEQKTEHMTRTLRGV MRVGLVAK GLLLKGDLDLELVLLCKEKPTTALLDKVADNLAIQLAAVTE KYEILQSV DDAAIVIKNTKEPPLSLTIHLTSPVVREEMEKVLAGETLSVN DPPDVLDR QKCLAALASLRHAKWFQARANGLKSCVIVIRVLRDLCTRPT WGPLRGWP LELLCEKSIGTANRPMGAGEALRRVLECLASGIVMPDGS GIYDPCEKEAT DAIGHLDRQQREDITQSAQHALRLAAFGQLHKVLGMDPLPSK MPKKPKNE NPVDYTVQIPPSTTYAITPMKRPMEEDGEKSPSKKKKKIQK KEEKAEP QAMNALMRLNQLKPLQYKLVSTGTPVHAPIFTMSVEVDGNS FEASGPSK KTAKLHVAVKVLQDMGLPTGAEGRDSSKGEDSAEETEAKPAV VAPAPVVE AVSTPSAAFPSDATAEQGPILTKHGKNPVMELNEKRRGLKYE LISETGGS HDKRFVMEVEVDGQKFQGAGSNKKVAKAYAALAALAEKLPD TPLALDANK KKRAPVPVRGGPKFAAKPHNPGFGMGGPMHNEVPPPNLRGR GRGGSIRG RGRGRGFGGANHGGYMNAGAGYGSYGYGNSATAGYSDFFTD CYGYHDFG SS

予測される分子量	103 kDa including tags
領域	1 to 702
タグ	GST tag N-Terminus

## 特性

---

Our **Abpromise guarantee** covers the use of **ab132543** in the following tested applications.

The application notes include recommended starting dilutions; optimal dilutions/concentrations should be determined by the end user.

アプリケーション	Western blot SDS-PAGE ELISA
製品の状態	Liquid
備考	This product was previously labelled as ILF3.

## 前処理および保存

---

保存方法および安定性	Shipped on dry ice. Upon delivery aliquot and store at -80°C. Avoid freeze / thaw cycles. pH: 8.00 Constituents: 0.31% Glutathione, 0.79% Tris HCl
------------	--

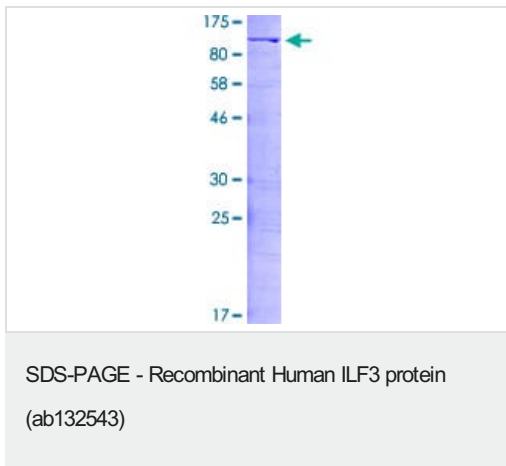
## 関連情報

---

機能	May facilitate double-stranded RNA-regulated gene expression at the level of post-transcription. Can act as a translation inhibitory protein which binds to coding sequences of acid beta-glucosidase (GCcase) and other mRNAs and functions at the initiation phase of GCcase mRNA translation, probably by inhibiting its binding to polysomes. Can regulate protein arginine N-methyltransferase 1 activity. May regulate transcription of the IL2 gene during T-cell activation. Can promote the formation of stable DNA-dependent protein kinase holoenzyme complexes on DNA.
組織特異性	Ubiquitous.
配列類似性	Contains 2 DRBM (double-stranded RNA-binding) domains. Contains 1 DZF domain.
翻訳後修飾	Phosphorylated by RNA-dependent protein kinase (EIF2AK2). Methylated by protein arginine N-methyltransferase 1. Arg-609 is dimethylated, probably to asymmetric dimethylarginine.
細胞内局在	Nucleus > nucleolus. Cytoplasm. Localized in cytoplasmic mRNP granules containing untranslated mRNAs.

## 画像

---



12.5% SDS-PAGE Stained with Coomassie Blue.

**Please note:** All products are "FOR RESEARCH USE ONLY. NOT FOR USE IN DIAGNOSTIC PROCEDURES"

### Our Abpromise to you: Quality guaranteed and expert technical support

---

- Replacement or refund for products not performing as stated on the datasheet
- Valid for 12 months from date of delivery
- Response to your inquiry within 24 hours
- We provide support in Chinese, English, French, German, Japanese and Spanish
- Extensive multi-media technical resources to help you
- We investigate all quality concerns to ensure our products perform to the highest standards

If the product does not perform as described on this datasheet, we will offer a refund or replacement. For full details of the Abpromise, please visit <https://www.abcam.co.jp/abpromise> or contact our technical team.

### Terms and conditions

---

- Guarantee only valid for products bought direct from Abcam or one of our authorized distributors