

# Recombinant human IL-1R-2 protein (Fc Chimera Active) ab221219

画像数 2

### 製品の詳細

<b>製品名</b>	Recombinant human IL-1R-2 protein (Fc Chimera Active)
<b>生理活性</b>	Measured by its binding ability in a functional ELISA. Immobilized Human IL-1 beta at 10 µg/mL (100 µL/well) can bind ab221219 with a linear range of 4-125 ng/mL.
<b>精製度</b>	> 95 % SDS-PAGE.
<b>エンドトキシン・レベル</b>	< 1.000 Eu/µg
<b>発現系</b>	HEK 293 cells
<b>アクセッション番号</b>	<b><u>P27930</u></b>
<b>タンパク質長</b>	Protein fragment
<b>Animal free</b>	No
<b>由来</b>	Recombinant
<b>生物種</b>	Human
<b>配列</b>	FTLQPAAHHTGAARSCRFRGRHYKREFRLEGEPPVALRCPQVPY WLWASVSP RINLTWHKNSARTVPGEEETRMWAQDGALWLLPALQEDSGT YVCTTRNA SYCDKMSIELRVFENTDAFLPFISYPQILTLSTSGVLVCPDL SEFTRDKT DVKIQWYKDSLLLDKDNEKFLSVRGTTTHLLVHDVALEDAGYY RCVLTFAH EGQQYNITRSIELRIKKKKEETIPVIISPLKTISASLGSRLT IPCKVFLG TGTPLTTMLWWTANDTHIESAYPGGRVTEGPRQEYSENNENY IEVPLIFD PVTREDLHMDFKCVVHNTLSFQTLRRTTVKE
<b>予測される分子量</b>	64 kDa including tags
<b>領域</b>	14 to 343
<b>タグ</b>	Fc tag C-Terminus
<b>配列の追加情報</b>	Extracellular domain fused with a human IgG1 Fc tag (Pro 100 - Lys 330; P01857) at the C-terminus (NP_004624.1).

## 特性

Our **Abpromise guarantee** covers the use of **ab221219** in the following tested applications.

The application notes include recommended starting dilutions; optimal dilutions/concentrations should be determined by the end user.

アプリケーション	Functional Studies SDS-PAGE
製品の状態	Lyophilized
備考	Previously labelled as IL1 Receptor II.

## 前処理および保存

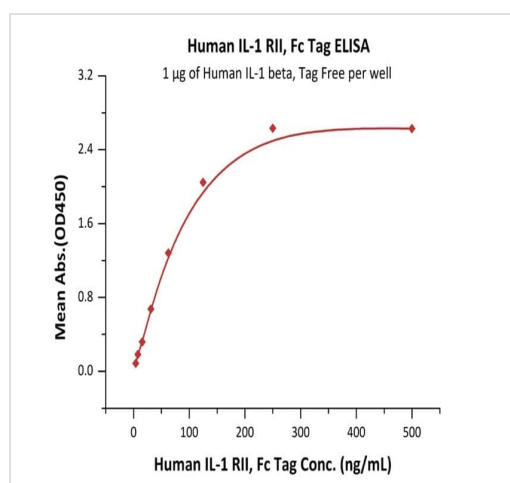
保存方法および安定性	Shipped at 4°C. Store at -20°C or -80°C. Avoid freeze / thaw cycle. pH: 7.4 Constituents: 0.61% Tris, 0.75% Glycine, 5% Trehalose  Lyophilized from 0.22 µm filtered solution. This product is an active protein and may elicit a biological response in vivo, handle with caution.
------------	--

再構成	Reconstitute with sterile deionized water to a concentration of 400 µg/ml.
-----	--

## 関連情報

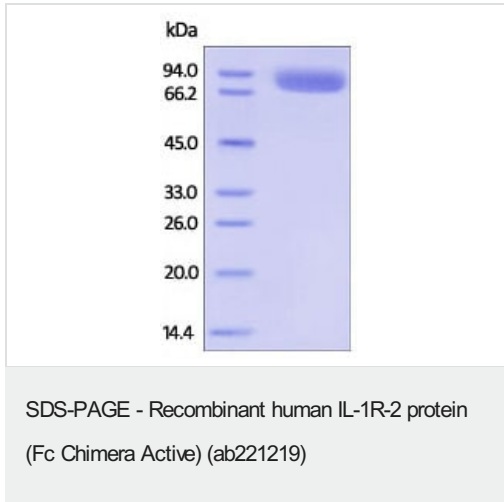
機能	Receptor for interleukin-1 alpha (IL-1A), beta (IL-1B), and interleukin-1 receptor antagonist protein (IL-1ra).
配列類似性	Belongs to the interleukin-1 receptor family. Contains 3 Ig-like C2-type (immunoglobulin-like) domains.
細胞内局在	Membrane.

## 画像



Immobilized Human IL-1 beta at 10 µg/mL (100 µL/well) can bind ab221219 with a linear range of 4-125 ng/mL.

Functional Studies - Recombinant human IL-1R-2 protein (Fc Chimera Active) (ab221219)



SDS-PAGE analysis of reduced ab221219 stained overnight with Coomassie Blue.

The protein migrates as 68-74 kDa on a SDS-PAGE gel under reducing conditions due to glycosylation.

**Please note:** All products are "FOR RESEARCH USE ONLY. NOT FOR USE IN DIAGNOSTIC PROCEDURES"

### Our Abpromise to you: Quality guaranteed and expert technical support

---

- Replacement or refund for products not performing as stated on the datasheet
- Valid for 12 months from date of delivery
- Response to your inquiry within 24 hours
  
- We provide support in Chinese, English, French, German, Japanese and Spanish
- Extensive multi-media technical resources to help you
- We investigate all quality concerns to ensure our products perform to the highest standards

If the product does not perform as described on this datasheet, we will offer a refund or replacement. For full details of the Abpromise, please visit <https://www.abcam.co.jp/abpromise> or contact our technical team.

### Terms and conditions

---

- Guarantee only valid for products bought direct from Abcam or one of our authorized distributors