

Recombinant human IL-13 receptor alpha 1 protein ab167745

画像数 2

製品の詳細

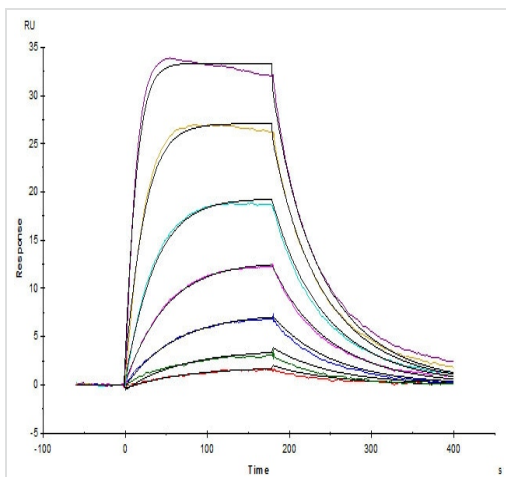
製品名	Recombinant human IL-13 receptor alpha 1 protein
生理活性	Measured by its binding ability in a functional ELISA. Immobilized rhIL13 receptor alpha 1 at 2 µg/mL (100 µL/well) can bind rhIL13 with a linear range of 0.1-10 ng/mL.
精製度	> 98 % SDS-PAGE. ab167745 was lyophilized from 0.22 µm filtered solution.
エンドトキシン・レベル	< 1.000 Eu/µg
発現系	HEK 293 cells
アクセッション番号	<u>P78552</u>
タンパク質長	Protein fragment
Animal free	No
由来	Recombinant
生物種	Human
配列	GGGGAAPTETQPPVTNLSVSVENLCTVIWTWNPPEGASSNCS LWYFSHFG DKQDKKIAPETRRSIEVPLNERICLQVGSQCSTNESEKPSIL VEKCISPP EGDPESAVTELQCIWHNLSYMKCSWL PGRNTSPDTNYTLYYW HRSLEKIH QCENIFREGQYFGCSFDLT KVVDSSFEQHSVQIMVKDNAGKI KPSFNIVP LTSRVKPDPPHIKNLSFHNDL YVQWENPQNFI SRCLFY EVE VNNSQTET HNVFYVQEAKCENPEFERNVENTSCFMVPGVLPDTLNTVRIR VKTNKLCY EDDKLWSNWSQEMSIGKKRNST
予測される分子量	38 kDa including tags
領域	22 to 343
タグ	His tag C-Terminus

特性

Our **Abpromise guarantee** covers the use of **ab167745** in the following tested applications.

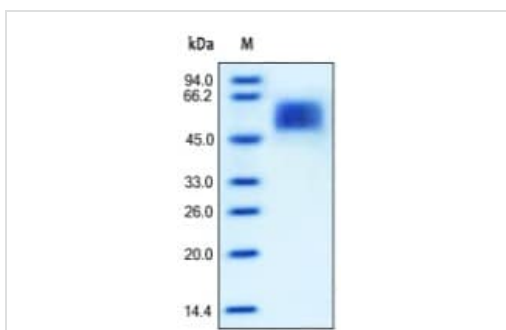
The application notes include recommended starting dilutions; optimal dilutions/concentrations should be determined by the end user.

アプリケーション	Functional Studies
	SDS-PAGE
製品の状態	Lyophilized
備考	<p>Measured by its binding ability in a functional ELISA. Immobilized rhIL-13 receptor alpha 1 at 2 µg/mL (100 µL/well) can bind rhIL-13 with a linear range of 0.1-10 ng/mL.</p> <p>Please contact our Scientific Support team for lot-specific reconstitution instructions.</p>
前処理および保存	
保存方法および安定性	<p>Shipped at 4°C. Store at +4°C short term (1-2 weeks). Upon delivery aliquot. Store at -20°C or -80°C. Avoid freeze / thaw cycle.</p> <p>pH: 7.40</p> <p>Constituents: 94% PBS, 5% Trehalose</p> <p>This product is an active protein and may elicit a biological response in vivo, handle with caution.</p>
関連情報	
機能	Binds with low affinity to interleukin-13 (IL13). Together with IL4RA can form a functional receptor for IL13. Also serves as an alternate accessory protein to the common cytokine receptor gamma chain for interleukin-4 (IL4) signaling, but cannot replace the function of IL2RG in allowing enhanced interleukin-2 (IL2) binding activity.
組織特異性	Ubiquitous. Highest levels in heart, liver, skeletal muscle and ovary; lowest levels in brain, lung and kidney. Also found in B-cells, T-cells and endothelial cells.
配列類似性	Belongs to the type I cytokine receptor family. Type 5 subfamily.
ドメイン	<p>The WSXWS motif appears to be necessary for proper protein folding and thereby efficient intracellular transport and cell-surface receptor binding.</p> <p>The box 1 motif is required for JAK interaction and/or activation.</p>
細胞内局在	Membrane.
画像	



Human IL-13 R alpha 1, His Tag (SPR verified) captured on CM5 chip via anti-His antibody can bind Human IL-13 with an affinity constant of 16 nM as determined in a SPR assay (Biacore T200).

Functional Studies - Recombinant human IL-13 receptor alpha 1 protein (ab167745)



SDS-PAGE analysis of reduced ab167745 and staining overnight with Coomassie Blue. DTT-reduced protein migrates as 55-65 kDa in SDS-PAGE due to glycosylation.

SDS-PAGE - Recombinant human IL-13 receptor alpha 1 protein (ab167745)

Please note: All products are "FOR RESEARCH USE ONLY. NOT FOR USE IN DIAGNOSTIC PROCEDURES"

Our Abpromise to you: Quality guaranteed and expert technical support

- Replacement or refund for products not performing as stated on the datasheet
- Valid for 12 months from date of delivery
- Response to your inquiry within 24 hours
- We provide support in Chinese, English, French, German, Japanese and Spanish
- Extensive multi-media technical resources to help you
- We investigate all quality concerns to ensure our products perform to the highest standards

If the product does not perform as described on this datasheet, we will offer a refund or replacement. For full details of the Abpromise, please visit <https://www.abcam.co.jp/abpromise> or contact our technical team.

Terms and conditions

- Guarantee only valid for products bought direct from Abcam or one of our authorized distributors