

## Product datasheet

# Recombinant Human Hes1 protein ab114192

### 画像数 1

#### 製品の詳細

---

製品名	Recombinant Human Hes1 protein
発現系	Wheat germ
アクセッション番号	<b>Q14469</b>
タンパク質長	Protein fragment
Animal free	No
由来	Recombinant
生物種	Human
配列	KSSKPIMEKRRRRARINESLSQLKTLILDALKKDSSRHSKLEK ADILEMTV KHLRNLQRAQMTAALSTDPSVLGKYRAGFSECMNEVTRFLST CEGVNTEV RTRLLGH
予測される分子量	37 kDa including tags
領域	36 to 142

#### 特性

---

Our **Abpromise guarantee** covers the use of **ab114192** in the following tested applications.

The application notes include recommended starting dilutions; optimal dilutions/concentrations should be determined by the end user.

アプリケーション	SDS-PAGE Western blot ELISA
製品の状態	Liquid

#### 前処理および保存

---

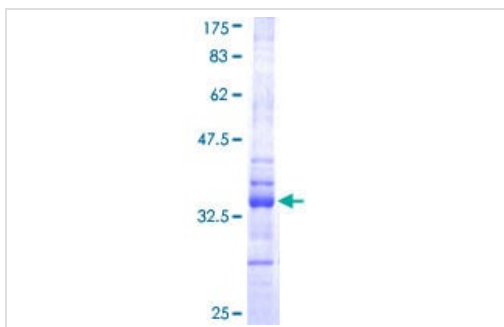
保存方法および安定性	Shipped on dry ice. Upon delivery aliquot and store at -80°C. Avoid freeze / thaw cycles. pH: 8.00 Constituents: 0.79% Tris HCl, 0.3% Glutathione
------------	---

#### 関連情報

---

<b>機能</b>	Transcriptional repressor of genes that require a bHLH protein for their transcription. May act as a negative regulator of myogenesis by inhibiting the functions of MYOD1 and ASH1. Binds DNA on N-box motifs: 5'-CACNAG-3' with high affinity and on E-box motifs: 5'-CANNTG-3' with low affinity.
<b>配列類似性</b>	Contains 1 basic helix-loop-helix (bHLH) domain. Contains 1 Orange domain.
<b>ドメイン</b>	Has a particular type of basic domain (presence of a helix-interrupting proline) that binds to the N-box (CACNAG), rather than the canonical E-box (CANNTG). The C-terminal WRPW motif is a transcriptional repression domain necessary for the interaction with Groucho/TLE family members, transcriptional corepressors recruited to specific target DNA by Hairy-related proteins. The bHLH, as well as cooperation between the central Orange domain and the C-terminal WRPW motif, is required for transcriptional repressor activity.
<b>細胞内局在</b>	Nucleus.

## 画像



ab114192 analysed on a 12.5% SDS-PAGE gel stained with Coomassie Blue.

SDS-PAGE - Recombinant Human Hes1 protein  
(ab114192)

**Please note:** All products are "FOR RESEARCH USE ONLY. NOT FOR USE IN DIAGNOSTIC PROCEDURES"

## Our Abpromise to you: Quality guaranteed and expert technical support

- Replacement or refund for products not performing as stated on the datasheet
- Valid for 12 months from date of delivery
- Response to your inquiry within 24 hours
- We provide support in Chinese, English, French, German, Japanese and Spanish
- Extensive multi-media technical resources to help you
- We investigate all quality concerns to ensure our products perform to the highest standards

If the product does not perform as described on this datasheet, we will offer a refund or replacement. For full details of the Abpromise, please visit <https://www.abcam.co.jp/abpromise> or contact our technical team.

## Terms and conditions

- Guarantee only valid for products bought direct from Abcam or one of our authorized distributors