

Recombinant human HDAC6 protein (Active) ab42632

3 References [画像数 2](#)

製品の詳細

製品名	Recombinant human HDAC6 protein (Active)
生理活性	Specific Activity: ≥ 350 pmol/min/ μ g. Assay Conditions: 25 mM Tris/HCl, pH 8.0, 137 mM NaCl, 2.7 mM KCl, 1 mM MgCl ₂ , and 0.1 mg/ml BSA, 20 μ M BPS HDAC substrate 3, and HDAC6 (3.1 – 200 ng). Incubation condition: 30 min at 37°C followed by developing for 15 min at room temperature.
精製度	> 65 % SDS-PAGE. Protein was purified by affinity chromatography and gel filtration.
発現系	Baculovirus infected Sf9 cells
アクセッション番号	<u>Q9UBN7</u>
タンパク質長	Full length protein
Animal free	No
由来	Recombinant
生物種	Human
配列	"MSPILGYWKIKGLVQPTRLLEYLEEKYEEHLYERDEGDKW RNKKFELG LEFPNLPYYIDGDVCLTQSMAIIRYIADKHNMLGGCPKERA ISMLEGAV LDIRYGVSRIAYSKDFETLKVDLFLSKLPEMLKMFEDRLCHKT YLNGDHVT HPDFMLYDALDVVLYMDPMCLDAFPKLVCFKKRIEAI PQIDK YLKSSKYI AWPLQGWQATFGGGDH PPKSDPMGHHHHHGRRRASVAAGILVPRGSP GLDGIYARGIQMTSTGQDSTTTTRQRRSRQNPQSPQDSSVTS KRNIKKGA VPRSIPNLAEVKKKGKMKKLGQAMEEDLIVGLQGM DLNLEAE ALAGTGLV LDEQLNEFHCLWDDSFPEGPERLHAIKEQLIQEGLLDRCV SF QARFAEKE ELMLVHSLEYIDLMETTQYMNEGELRVLADTYDSVYLHPNSY SCACLASG SVLRLVDAVLGAEIRNGMAIIRPPGHHAQHSLMDGYCMFNHV AVAARYAQ QKHRIRRVLIVDWDVHHGQGTQFTFDQDPSVLYFSIHR YEQG RFPHLKA

SNWSTTGFGQQGYTINVPWNQVGMRDADYIAAFLHVLLPVA
LEFQPQLV
LVAAGFDALQGDPKGEMAATPAGFAQLTHLLMGLAGGKLILS
LEGGYNLR
ALAEGVSASLHTLLGDPCMLESPGAPCRSAQASVSCALEAL
EPFWEVLV
RSTETVERDNMEEDNVEESEEEGPWEPPVLPILTWPVLQSRT
GLVYDQNM
MNHCLWDSHHPEVPQRILRIMCRLEELGLAGRCLTLTPRPA
TEAELLTC
HSAEYVGHRLATEKMKTRELHRESSNFDSIYICPSTFACAQL
ATGAACRL
VEAVLSGEVLNGAAVVRPPGHAEQDAACGFCFFNSVAVAAR
HAQTISGH
ALRILIVDWDVHHGNGTQHMFEEDPSVLYVSLHRYDHGTFFP
MGDEGASS
QIGRAAGTGFTVNVAVNGPRMGDADYLAAWHRLVLPPIAYEFN
PELVLSA
GFDAARGDPLGGCQVSPEGYHLTHLLMGLASGRIILILEGG
YNLTSISE
SMAACTRSLLDGPPPLLTLP RPPLSGALASITETIQVHRRYW
RSLRVMKV
EDREGPSSSKLVTKKAPQPAKPRLAERMTTREKKVLEAGMGK
VTSASFGE
ESTPGQTNSETAVVALTQDQPSEAATGGATLAQTISEAAIGG
AMLGQTTS
EEAVGGATPDQTTSEETVGGAILDQTTSEDAVGGATLGQTTS
EEAVGGAT
LAQTTSEAAMEGATLDQTTSEEAPGGTELIQTPLASSTDHQT
PPTSPVQG
TTPQISPSTLIGSLRTELELGSSEQGASESQAPGEENLLGEAA
GGQDMADS
MLMQGSRGLTDQAIIFYAVTPLPWCPLVAVCPIPAAGLDVTQ
PCGDCGTI
QENWVCLSCYQVYCGRYINGHMLQHHGNSGHPLVLSYIDLSA
WCYYCQAY VHHQALLDVKNIAHQNKFGEDMPHPH"

予測される分子量	161 kDa including tags
領域	1 to 1215
タグ	GST tag N-Terminus
配列の追加情報	BC069243. NP_006035 161 kDa including tags

特性

Our **Abpromise guarantee** covers the use of **ab42632** in the following tested applications.

The application notes include recommended starting dilutions; optimal dilutions/concentrations should be determined by the end user.

アプリケーション	Inhibition Assay
	Functional Studies
	SDS-PAGE

製品の状態

Liquid

前処理および保存

保存方法および安定性

Shipped on Dry Ice. Upon delivery aliquot. Store at -80°C. Avoid freeze / thaw cycle.

pH: 7.5

Constituents: 0.63% Tris HCl, 20% Glycerol (glycerin, glycerine), 0.64% Sodium chloride, 0.0165% Potassium chloride, 0.04% Tween, 0.0462% (R*,R*)-1,4-Dimercaptobutan-2,3-diol

This product is an active protein and may elicit a biological response in vivo, handle with caution.

関連情報

機能

Responsible for the deacetylation of lysine residues on the N-terminal part of the core histones (H2A, H2B, H3 and H4). Histone deacetylation gives a tag for epigenetic repression and plays an important role in transcriptional regulation, cell cycle progression and developmental events. Histone deacetylases act via the formation of large multiprotein complexes (By similarity). Plays a central role in microtubule-dependent cell motility via deacetylation of tubulin.

配列類似性

Belongs to the histone deacetylase family. HD type 2 subfamily.
Contains 1 UBP-type zinc finger.

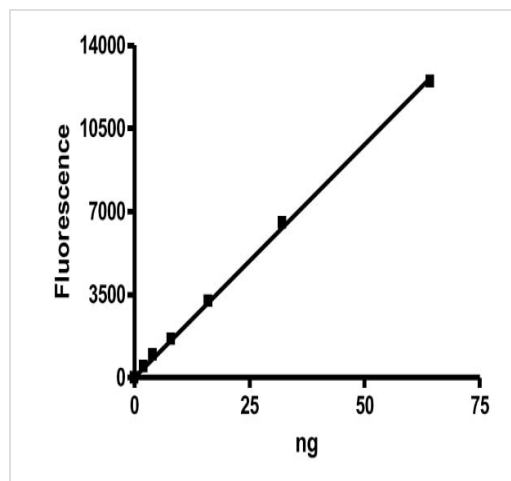
翻訳後修飾

Ubiquitinated. Its polyubiquitination however does not lead to its degradation.
Sumoylated in vitro.

細胞内局在

Nucleus. Cytoplasm. It is mainly cytoplasmic, where it is associated with microtubules.

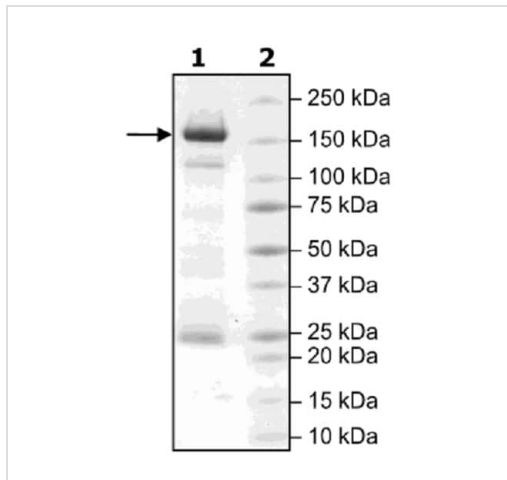
画像



Specific Activity: ≥ 350 pmol/min/ μ g.

Assay Conditions: 25 mM Tris/HCl, pH 8.0, 137 mM NaCl, 2.7 mM KCl, 1 mM MgCl₂, and 0.1 mg/ml BSA, 20 μ M BPS HDAC substrate 3, and HDAC6 (3.1 – 200 ng). Incubation condition: 30 min at 37°C followed by developing for 15 min at room temperature.

Functional Studies - Recombinant human HDAC6 protein (Active) (ab42632)



4-20% SDS-PAGE - Recombinant human HDAC6 protein (Active) (ab42632).

Lane 1: 2µg HDAC6.

Lane 2: MW marker.

SDS-PAGE - Recombinant human HDAC6 protein (Active) (ab42632)

Please note: All products are "FOR RESEARCH USE ONLY. NOT FOR USE IN DIAGNOSTIC PROCEDURES"

Our Abpromise to you: Quality guaranteed and expert technical support

- Replacement or refund for products not performing as stated on the datasheet
- Valid for 12 months from date of delivery
- Response to your inquiry within 24 hours
- We provide support in Chinese, English, French, German, Japanese and Spanish
- Extensive multi-media technical resources to help you
- We investigate all quality concerns to ensure our products perform to the highest standards

If the product does not perform as described on this datasheet, we will offer a refund or replacement. For full details of the Abpromise, please visit <https://www.abcam.co.jp/abpromise> or contact our technical team.

Terms and conditions

- Guarantee only valid for products bought direct from Abcam or one of our authorized distributors