

Recombinant Human GLP-1 protein (Tagged) ab235719

画像数 1

製品の詳細

製品名	Recombinant Human GLP-1 protein (Tagged)
精製度	> 85 % SDS-PAGE.
発現系	Escherichia coli
アクセッション番号	<u>P01275</u>
タンパク質長	Protein fragment
Animal free	No
由来	Recombinant
生物種	Human
配列	HSQGTFTSDYSKYLDSRRAQDFVQWLMNTRNRNNIA
予測される分子量	30 kDa including tags
領域	53 to 89
タグ	GST tag N-Terminus
配列の追加情報	Corresponding to peptide Oxyntomodulin (aa 53-89/180).

特性

Our **Abpromise guarantee** covers the use of **ab235719** in the following tested applications.

The application notes include recommended starting dilutions; optimal dilutions/concentrations should be determined by the end user.

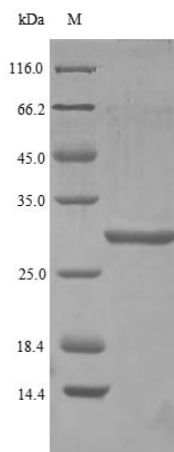
アプリケーション	SDS-PAGE
製品の状態	Liquid

前処理および保存

保存方法および安定性	Shipped at 4°C. Store at -20°C or -80°C. Avoid freeze / thaw cycle. pH: 7.2 Constituents: Tris buffer, 50% Glycerol (glycerin, glycerine)
------------	---

関連情報

機能	<p>Glucagon plays a key role in glucose metabolism and homeostasis. Regulates blood glucose by increasing gluconeogenesis and decreasing glycolysis. A counterregulatory hormone of insulin, raises plasma glucose levels in response to insulin-induced hypoglycemia. Plays an important role in initiating and maintaining hyperglycemic conditions in diabetes.</p> <p>GLP-1 is a potent stimulator of glucose-dependent insulin release. Play important roles on gastric motility and the suppression of plasma glucagon levels. May be involved in the suppression of satiety and stimulation of glucose disposal in peripheral tissues, independent of the actions of insulin. Have growth-promoting activities on intestinal epithelium. May also regulate the hypothalamic pituitary axis (HPA) via effects on LH, TSH, CRH, oxytocin, and vasopressin secretion. Increases islet mass through stimulation of islet neogenesis and pancreatic beta cell proliferation. Inhibits beta cell apoptosis.</p> <p>GLP-2 stimulates intestinal growth and up-regulates villus height in the small intestine, concomitant with increased crypt cell proliferation and decreased enterocyte apoptosis. The gastrointestinal tract, from the stomach to the colon is the principal target for GLP-2 action. Plays a key role in nutrient homeostasis, enhancing nutrient assimilation through enhanced gastrointestinal function, as well as increasing nutrient disposal. Stimulates intestinal glucose transport and decreases mucosal permeability.</p> <p>Oxyntomodulin significantly reduces food intake. Inhibits gastric emptying in humans. Suppression of gastric emptying may lead to increased gastric distension, which may contribute to satiety by causing a sensation of fullness.</p> <p>Glicentin may modulate gastric acid secretion and the gastro-pyloro-duodenal activity. May play an important role in intestinal mucosal growth in the early period of life.</p>
組織特異性	<p>Glucagon is secreted in the A cells of the islets of Langerhans. GLP-1, GLP-2, oxyntomodulin and glicentin are secreted from enteroendocrine cells throughout the gastrointestinal tract. GLP1 and GLP2 are also secreted in selected neurons in the brain.</p>
配列類似性	<p>Belongs to the glucagon family.</p>
翻訳後修飾	<p>Proglucagon is post-translationally processed in a tissue-specific manner in pancreatic A cells and intestinal L cells. In pancreatic A cells, the major bioactive hormone is glucagon cleaved by PCSK2/PC2. In the intestinal L cells PCSK1/PC1 liberates GLP-1, GLP-2, glicentin and oxyntomodulin. GLP-1 is further N-terminally truncated by post-translational processing in the intestinal L cells resulting in GLP-1(7-37) GLP-1-(7-36)amide. The C-terminal amidation is neither important for the metabolism of GLP-1 nor for its effects on the endocrine pancreas.</p>
細胞内局在	<p>Secreted.</p>
画像	



SDS-PAGE - Recombinant Human GLP-1 protein
(Tagged) (ab235719)

(Tris-glycine gel) Discontinuous SDS-PAGE (reduced) with 5% enrichment gel and 15% separation gel of ab235719.

Please note: All products are "FOR RESEARCH USE ONLY. NOT FOR USE IN DIAGNOSTIC PROCEDURES"

Our Abpromise to you: Quality guaranteed and expert technical support

- Replacement or refund for products not performing as stated on the datasheet
- Valid for 12 months from date of delivery
- Response to your inquiry within 24 hours
- We provide support in Chinese, English, French, German, Japanese and Spanish
- Extensive multi-media technical resources to help you
- We investigate all quality concerns to ensure our products perform to the highest standards

If the product does not perform as described on this datasheet, we will offer a refund or replacement. For full details of the Abpromise, please visit <https://www.abcam.co.jp/abpromise> or contact our technical team.

Terms and conditions

- Guarantee only valid for products bought direct from Abcam or one of our authorized distributors