

Recombinant human Galectin 3 protein ab78583

画像数 1

製品の詳細

製品名	Recombinant human Galectin 3 protein
生理活性	The activity is determined by the ability to induce chemotaxis of human PBMCs at concentrations ranging from 2-220 µg/mL. Corresponding to a specific activity of 5×10^2 units/mg.
精製度	> 95 % SDS-PAGE. Purity Approximately 97% as determined by: Analysis by RP-HPLC. Reducing and non-reducing SDS-PAGE. Endotoxin level as measured by LAL is <0.01ng/µg or <0.1EU/µg.
発現系	Escherichia coli
タンパク質長	Full length protein
Animal free	No
由来	Recombinant
生物種	Human
配列	ADNFSLHDAL SGSGNPNPQG WPGAWGNQPA GAGGYPGASY PGAYPGQAPP GAYPGQAPPG AYHGAPGAYP GAPAPGVYPG PPSGPGAYPS SGQPSAPGAY PATGPYGAPA GPLIVPYNLP LPGGVVPRML ITILGTVKPN ANRIALDFQR GNDVAFHFNP RFNENRRVI VCNTKLDNNW GREERQSVFP FESGKPFKIQ VLVEPDHFKV AVNDAHLLQY NHRVKKLNEI SKLGISGDID LTSASYTMI
予測される分子量	26 kDa
領域	1 to 250

特性

Our **Abpromise guarantee** covers the use of **ab78583** in the following tested applications.

The application notes include recommended starting dilutions; optimal dilutions/concentrations should be determined by the end user.

アプリケーション	SDS-PAGE
製品の状態	Lyophilized
備考	For long term storage it is recommended to add a carrier protein (0.1% HSA or BSA).

前処理および保存

保存方法および安定性

Shipped at 4°C. Upon delivery aliquot and store at -20°C or -80°C. Avoid repeated freeze / thaw cycles.

Constituents: 0.164% Sodium phosphate, 0.29% Sodium chloride

This product is an active protein and may elicit a biological response in vivo, handle with caution.

再構成

Reconstitute with sterile water at 0.1-1.0 mg/ml, which can then be further diluted to other aqueous solutions.

関連情報

機能

Galactose-specific lectin which binds IgE. May mediate with the alpha-3, beta-1 integrin the stimulation by CSPG4 of endothelial cells migration. Together with DMBT1, required for terminal differentiation of columnar epithelial cells during early embryogenesis.

組織特異性

A major expression is found in the colonic epithelium. It is also abundant in the activated macrophages.

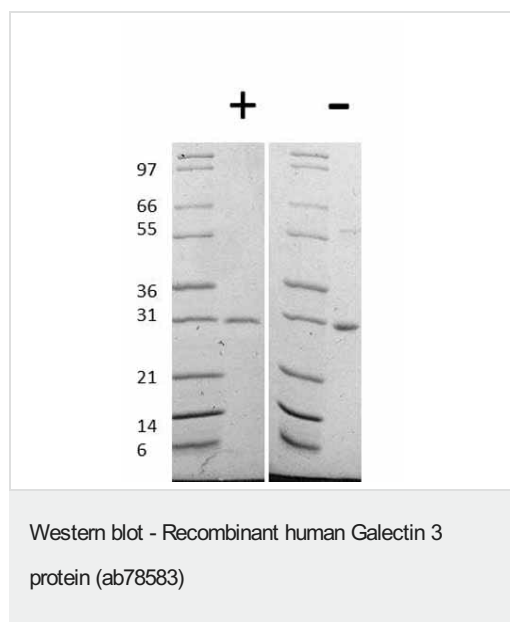
配列類似性

Contains 1 galectin domain.

細胞内局在

Nucleus. Cytoplasmic in adenomas and carcinomas. May be secreted by a non-classical secretory pathway and associate with the cell surface.

画像



ab78583 used in Western Blot. Figure: 1 ug under (+) reducing and (-) non-reducing conditions in a 4-20% Tris-Glycine gel stained with Coomassie Blue. Human Galectin-3 has a predicted MW of 26 kDa.

Please note: All products are "FOR RESEARCH USE ONLY. NOT FOR USE IN DIAGNOSTIC PROCEDURES"

Our Abpromise to you: Quality guaranteed and expert technical support

- Replacement or refund for products not performing as stated on the datasheet
- Valid for 12 months from date of delivery
- Response to your inquiry within 24 hours

- We provide support in Chinese, English, French, German, Japanese and Spanish
- Extensive multi-media technical resources to help you
- We investigate all quality concerns to ensure our products perform to the highest standards

If the product does not perform as described on this datasheet, we will offer a refund or replacement. For full details of the Abpromise, please visit <https://www.abcam.co.jp/abpromise> or contact our technical team.

Terms and conditions

- Guarantee only valid for products bought direct from Abcam or one of our authorized distributors