

Recombinant Human GALE protein ab96767

画像数 1

製品の詳細

製品名	Recombinant Human GALE protein
精製度	> 95 % SDS-PAGE. ab96767 is purified using conventional chromatography techniques.
発現系	Escherichia coli
アクセッション番号	<u>Q14376</u>
タンパク質長	Full length protein
Animal free	No
由来	Recombinant
生物種	Human
配列	<p>MGSSHHHHHHSSGLVPRGSHMAEKVLVTGGAGYIGSHTVL ELLEAGYLPV VIDNFHNAFRGGSLPESLRRVQELTGRSVEFEEMDILDQGA LQRLFKKY SFMAVIHFAGLKAVGESVQKPLDYRVNLTGTIQLLEIMKAH GVKNLVFS SSATVYGNPQYLPLDEAHPTGGCTNPYGKSKFFIEEMIRDLC QADKTWNA VLLRYFNPTGAHASGCIGEDPQGIPNNLMPYVSQVAIGRREA LNVFGNDY DTEDGTGVRDYIHVVDLAKGHIAALRKLKEQCGCRIYNLTGTG TGYSVLQM VQAMEKASGKKIPYKVVARRREGDVAACYANPSLAQEELGWTA ALGLDRMC EDLWRWQKQNPSGFGTQA</p>
予測される分子量	40 kDa including tags
領域	1 to 348
タグ	His tag N-Terminus

特性

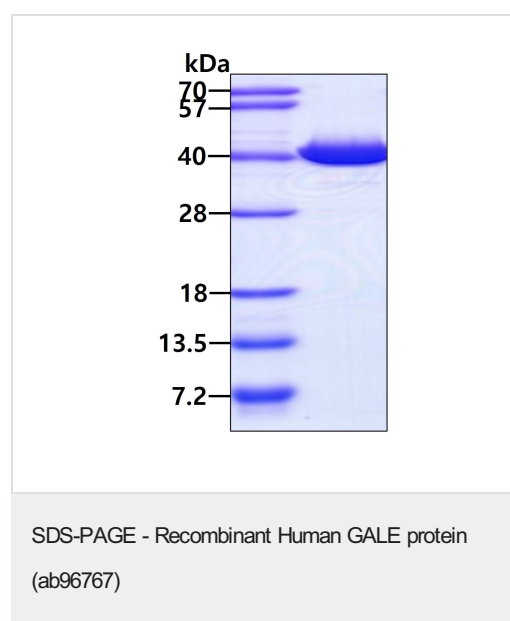
Our **Abpromise guarantee** covers the use of **ab96767** in the following tested applications.

The application notes include recommended starting dilutions; optimal dilutions/concentrations should be determined by the end user.

アプリケーション Mass Spectrometry

	SDS-PAGE
製品の状態	Liquid
前処理および保存	
保存方法および安定性	<p>Shipped at 4°C. Upon delivery aliquot and store at -20°C or -80°C. Avoid repeated freeze / thaw cycles.</p> <p>pH: 8.00</p> <p>Constituents: 0.077% DTT, 0.316% Tris HCl, 0.0292% EDTA, 10% Glycerol (glycerin, glycerine), 0.58% Sodium chloride</p>
関連情報	
機能	Catalyzes two distinct but analogous reactions: the epimerization of UDP-glucose to UDP-galactose and the epimerization of UDP-N-acetylglucosamine to UDP-N-acetylgalactosamine.
パスウェイ	Carbohydrate metabolism; galactose metabolism.
関連疾患	Defects in GALE are the cause of epimerase-deficiency galactosemia (EDG) [MIM:230350]; also known as galactosemia type 3. Clinical features include early-onset cataracts, liver damage, deafness and mental retardation. There are two clinically distinct forms of EDG. (1) A benign, or 'peripheral' form with no detectable GALE activity in red blood cells and characterized by mild symptoms. Some patients may suffer no symptoms beyond raised levels of galactose-1-phosphate in the blood. (2) A much rarer 'generalized' form with undetectable levels of GALE activity in all tissues and resulting in severe features such as restricted growth and mental development.
配列類似性	Belongs to the sugar epimerase family.

画像



3ug by SDS-PAGE under reducing condition and visualized by coomassie blue stain.

Our Abpromise to you: Quality guaranteed and expert technical support

- Replacement or refund for products not performing as stated on the datasheet
- Valid for 12 months from date of delivery
- Response to your inquiry within 24 hours
- We provide support in Chinese, English, French, German, Japanese and Spanish
- Extensive multi-media technical resources to help you
- We investigate all quality concerns to ensure our products perform to the highest standards

If the product does not perform as described on this datasheet, we will offer a refund or replacement. For full details of the Abpromise, please visit <https://www.abcam.co.jp/abpromise> or contact our technical team.

Terms and conditions

- Guarantee only valid for products bought direct from Abcam or one of our authorized distributors