

Product datasheet

Recombinant Human GABARAPL2/GATE-16 protein ab103055

画像数 1

製品の詳細

製品名	Recombinant Human GABARAPL2/GATE-16 protein
精製度	> 90 % SDS-PAGE. ab103055 was purified using conventional chromatography techniques.
発現系	Escherichia coli
アクセッション番号	<u>P60520</u>
タンパク質長	Full length protein
Animal free	No
由来	Recombinant
生物種	Human
配列	MGSSHHHHHSSGLVPRGSHMKWMFKEDHSLEHRCVESAK IRAKYPDRV VIVEKVSQSIVDIDKRKYLVPDITVAQFMWIIRKRIQLPS EKAIPLFV DKTVPQSSLTMGQLYEKEKDEDGFLYVAYSGENTFGF
予測される分子量	16 kDa including tags
領域	1 to 117
タグ	His tag N-Terminus

特性

Our **Abpromise guarantee** covers the use of **ab103055** in the following tested applications.

The application notes include recommended starting dilutions; optimal dilutions/concentrations should be determined by the end user.

アプリケーション	SDS-PAGE Mass Spectrometry
質量分析	MALDI-TOF
製品の状態	Liquid
備考	Previously labelled as GABARAPL2.

前処理および保存

保存方法および安定性

Shipped at 4°C. Store at +4°C short term (1-2 weeks). Upon delivery aliquot. Store at -20°C or -80°C. Avoid freeze / thaw cycle.

pH: 8.00

Constituents: 0.077% DTT, 0.316% Tris HCl, 20% Glycerol (glycerin, glycerine), 1.16% Sodium chloride

関連情報

機能

Involved in intra-Golgi traffic. Modulates intra-Golgi transport through coupling between NSF activity and SNAREs activation. It first stimulates the ATPase activity of NSF which in turn stimulates the association with GOSR1.

組織特異性

Ubiquitous. Expressed at high levels in the brain, heart, prostate, ovary, spleen and skeletal muscle. Expressed at very low levels in lung, thymus and small intestine.

配列類似性

Belongs to the MAP1 LC3 family.

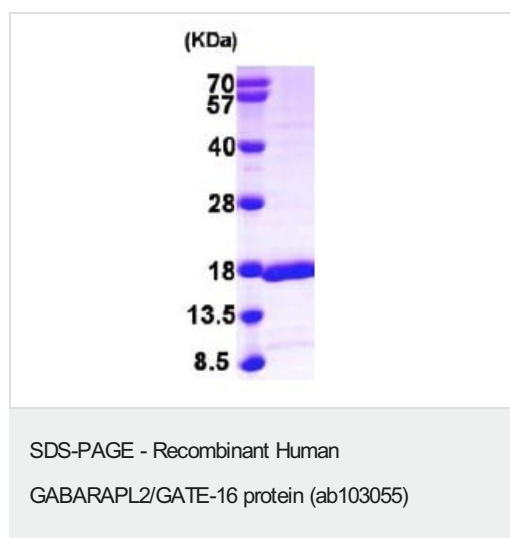
翻訳後修飾

Phosphorylated upon DNA damage, probably by ATM or ATR.

細胞内局在

Golgi apparatus.

画像



15% SDS-PAGE (3 µg)

Please note: All products are "FOR RESEARCH USE ONLY. NOT FOR USE IN DIAGNOSTIC PROCEDURES"

Our Abpromise to you: Quality guaranteed and expert technical support

- Replacement or refund for products not performing as stated on the datasheet
- Valid for 12 months from date of delivery
- Response to your inquiry within 24 hours
- We provide support in Chinese, English, French, German, Japanese and Spanish
- Extensive multi-media technical resources to help you
- We investigate all quality concerns to ensure our products perform to the highest standards

If the product does not perform as described on this datasheet, we will offer a refund or replacement. For full details of the Abpromise, please visit <https://www.abcam.co.jp/abpromise> or contact our technical team.

Terms and conditions

- Guarantee only valid for products bought direct from Abcam or one of our authorized distributors