

Recombinant Human FUS2 protein ab86853

画像数 1

製品の詳細

| | |
|-------------|--------------------------------------------------------------------------------------------------------------------------------------------------------------------------------------------------------------------------------------------------------------------------------------------------------------------------------------------------------------------------------------------------------|
| 製品名 | Recombinant Human FUS2 protein |
| 精製度 | > 95 % SDS-PAGE. ab86853 is purified using conventional chromatography techniques. |
| 発現系 | Escherichia coli |
| タンパク質長 | Full length protein |
| Animal free | No |
| 由来 | Recombinant |
| 生物種 | Human |
| 配列 | MGSSHHHHHH SSGLVPRGSH MQELTLSPGP AKLTPTLDPT HRMELILSTS PAELTLDPAC QPKLPLDSTC QPEMTFNPGP TELTLDPEHQ PEETPAPSLA ELTLEPVHRR PELLDACADL INDQWPRSRT SRLHSLGQSS DAFPLCLMLL SPHPTLEAAP VVVGHARLSR VLNQPQSLLV ETVVVARALR GRGFGRRLME GLEVFARARG FRKLHLTTHD QVHFYTHLGY QLGEVQGLV FTSRRLPATL LNAFPTAPSP RPPRKAPNLT AQAAPRGPKG PPLPPPPPLP ECLTISPPVP SGPPSKSLL E TQYQNVGRGP IFWMEKDI |

特性

Our **Abpromise guarantee** covers the use of **ab86853** in the following tested applications.

The application notes include recommended starting dilutions; optimal dilutions/concentrations should be determined by the end user.

| | |
|----------|----------|
| アプリケーション | SDS-PAGE |
| 製品の状態 | Liquid |

前処理および保存

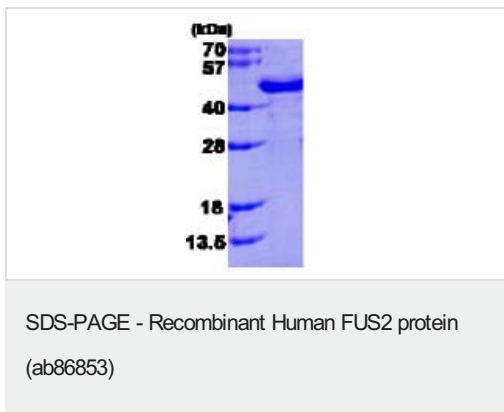
| | |
|------------|------------------------------------------------------------------------------------------------------------------|
| 保存方法および安定性 | Shipped at 4°C. Upon delivery aliquot and store at -20°C or -80°C. Avoid repeated freeze / thaw cycles. pH: 5 |
|------------|------------------------------------------------------------------------------------------------------------------|

Constituents: 30% Glycerol (glycerin, glycerine), 0.87% Sodium chloride, 0.39% MES

関連情報

| | |
|-------|----------------------------------------------------------------------------------------------------------------------------------------------------------------------------------------------------------------------------------------------------------------------------------------------------------------------------------------------------------------------------------------------|
| 関連性 | FUS2 seems to be involved in N-acetylation. Acts on peptides with a N-terminal Met followed by Asp/Glu/Asn. May act as a tumor suppressor. It is strongly expressed in heart and skeletal muscle, followed by brain and pancreas, with weak expression in kidney, liver, and lung and no expression in placenta. Defects in FUS2 are found in non-small cell lung cancer (NSCLC) cell lines. |
| 細胞内局在 | Cytoplasmic |

画像



15% SDS-PAGE showing ab86853 (3μg).

Note: Real molecular weight on SDS-PAGE is shifted up compared to predicted molecular weight.

Please note: All products are "FOR RESEARCH USE ONLY. NOT FOR USE IN DIAGNOSTIC PROCEDURES"

Our Abpromise to you: Quality guaranteed and expert technical support

- Replacement or refund for products not performing as stated on the datasheet
- Valid for 12 months from date of delivery
- Response to your inquiry within 24 hours
- We provide support in Chinese, English, French, German, Japanese and Spanish
- Extensive multi-media technical resources to help you
- We investigate all quality concerns to ensure our products perform to the highest standards

If the product does not perform as described on this datasheet, we will offer a refund or replacement. For full details of the Abpromise, please visit <https://www.abcam.co.jp/abpromise> or contact our technical team.

Terms and conditions

- Guarantee only valid for products bought direct from Abcam or one of our authorized distributors