

Recombinant human FKBP6 protein ab95497

画像数 1

製品の詳細

製品名	Recombinant human FKBP6 protein
生理活性	<p>Specific activity is > 190 nmoles/min/mg, and is defined as the amount of enzyme that cleaves 1 µmole of suc-AAPF-pNA per minute at 25°C in Tris-Hcl pH8.0 using chymotrypsin.</p> <p>Activity Assay</p> <p>Prepare 170 µl assay buffer into a suitable container and pre-chill on ice before use: The final concentrations are 200 mM Tris-Hcl, pH 8.0, and 20nM chymotrypsin.</p> <p>Add 10 µl of recombinant FKBP6 protein with 1 µg in assay buffer.</p> <p>Mix by inversion and equilibrate to 1°C and monitor the A405nm until the value is constant using a spectrophotometer.</p> <p>Add 20 µl pre-chilled 5mM suc-AAFP-pNA. (Substrate was dissolved in TFE that contained 460mM LiCl to a concentration of 3 mM)</p> <p>Record the increase in A405 nm for 30 minutes at 25°C.</p>
精製度	<p>> 95 % SDS-PAGE.</p> <p>ab95497 is purified using conventional chromatography techniques.</p>
発現系	Escherichia coli
アクセッション番号	<u>O75344</u>
タンパク質長	Full length protein
Animal free	No
由来	Recombinant
生物種	Human
配列	<p>MGSSHHHHHSSGLVPRGSHMGGSALNQGVLGGDDAPGQS LYERLSQRML DISGDRGVLKDVIREGAGDLVAPDASVLVKYSGYLEHMDRPF DSNYFRKT PRLMKLGEDITLWGMELGLLSMRRGELARFLFKPNYAYGTLG CPPLIPPN TTVLFEIELLDFLDCAESDKFCALSAEQDQFPLQKVLKVAA TEREFGNY LFRQNRFYDAKVRYKRALLLLRRRSAPPEEQHLVEAAKLPVL LNLSFTYL KLD RPTIALCYGEQALIIDQKNAKALFRCGQACLLLTEYQKA RDFLVRAQ KEQPFNHDINNELKKLASCYRDYVDKEKEMWHRMFAPCGDGS TAGES</p>

予測される分子量	39 kDa including tags
タグ	His tag N-Terminus

特性

Our **Abpromise guarantee** covers the use of **ab95497** in the following tested applications.

The application notes include recommended starting dilutions; optimal dilutions/concentrations should be determined by the end user.

アプリケーション	SDS-PAGE
	Mass Spectrometry
	Functional Studies

質量分析	MALDI-TOF
------	-----------

製品の状態	Liquid
-------	--------

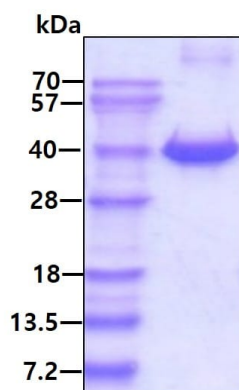
前処理および保存

保存方法および安定性	Shipped at 4°C. Upon delivery aliquot and store at -20°C or -80°C. Avoid repeated freeze / thaw cycles.
	pH: 8.00
	Constituents: 0.0154% (R*,R*)-1,4-Dimercaptobutan-2,3-diol, 0.316% Tris HCl, 0.0292% EDTA, 40% Glycerol (glycerin, glycerine), 1.1688% Sodium chloride
	This product is an active protein and may elicit a biological response in vivo, handle with caution.

関連情報

機能	PPlases accelerate the folding of proteins.
組織特異性	Detected in all tissues examined, with higher expression in testis, heart, skeletal muscle, liver, and kidney.
関連疾患	Note=FKBP6 is located in the Williams-Beuren syndrome (WBS) critical region. WBS results from a hemizygous deletion of several genes on chromosome 7q11.23, thought to arise as a consequence of unequal crossing over between highly homologous low-copy repeat sequences flanking the deleted region. Haploinsufficiency of FKBP6 may be the cause of certain cardiovascular and musculo-skeletal abnormalities observed in the disease.
配列類似性	Contains 1 PPlase FKBP-type domain.
	Contains 3 TPR repeats.

画像



SDS-PAGE - Recombinant human FKBP6 protein
(ab95497)

15% SDS-PAGE showing ab95497 at approximately 39.3kDa (3µg) under reducing condition and visualized by coomassie blue stain.

Please note: All products are "FOR RESEARCH USE ONLY. NOT FOR USE IN DIAGNOSTIC PROCEDURES"

Our Abpromise to you: Quality guaranteed and expert technical support

- Replacement or refund for products not performing as stated on the datasheet
- Valid for 12 months from date of delivery
- Response to your inquiry within 24 hours
- We provide support in Chinese, English, French, German, Japanese and Spanish
- Extensive multi-media technical resources to help you
- We investigate all quality concerns to ensure our products perform to the highest standards

If the product does not perform as described on this datasheet, we will offer a refund or replacement. For full details of the Abpromise, please visit <https://www.abcam.co.jp/abpromise> or contact our technical team.

Terms and conditions

- Guarantee only valid for products bought direct from Abcam or one of our authorized distributors