

# Recombinant human FKBP12 protein ab85840

## 1 References [画像数 1](#)

### 製品の詳細

製品名	Recombinant human FKBP12 protein
生理活性	Specific activity is > 800nmol/min/mg, and is defined as the amount of enzyme that cleaves 1nmole of suc-AAPF-pNA per minute at 37C in Tris-HCl pH 8.0 using chymotrypsin.
精製度	> 95 % SDS-PAGE. ab85840 is purified using conventional chromatography. Endotoxin Level: < 1.0 EU per 1 µg of protein (determined by LAL method).
エンドトキシン・レベル	< 1.000 Eu/µg
発現系	Escherichia coli
タンパク質長	Full length protein
Animal free	No
由来	Recombinant
生物種	Human
配列	MGSSHHHHHH SGLVPRGSH MG VQVETISP GDGRTPFKRG QTCVVHYTGM LEDGKKFDSS RDRNKPFKFM LGKQEVIRGW EEGVAQMSVG QRAKLTISPD YAYGATGHPG IIPPHATLVF DVELLKLE
タグ	His tag N-Terminus

### 特性

Our **Abpromise guarantee** covers the use of **ab85840** in the following tested applications.

The application notes include recommended starting dilutions; optimal dilutions/concentrations should be determined by the end user.

アプリケーション	SDS-PAGE Functional Studies
質量分析	MALDI-TOF
製品の状態	Liquid

### 前処理および保存

保存方法および安定性 Shipped at 4°C. Upon delivery aliquot and store at -20°C or -80°C. Avoid repeated freeze / thaw cycles.

pH: 8.00

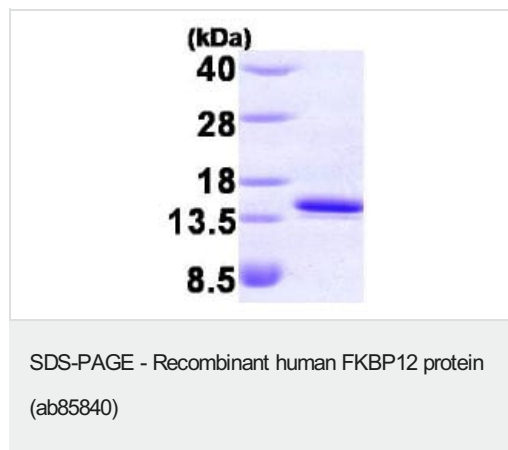
Constituents: 0.0154% DTT, 0.316% Tris HCl, 10% Glycerol, 0.58% Sodium chloride

This product is an active protein and may elicit a biological response in vivo, handle with caution.

## 関連情報

機能	May play a role in modulation of ryanodine receptor isoform-1 (RYR-1), a component of the calcium release channel of skeletal muscle sarcoplasmic reticulum. There are four molecules of FKBP12 per skeletal muscle RYR. PPlases accelerate the folding of proteins. It catalyzes the cis-trans isomerization of proline imidic peptide bonds in oligopeptides.
配列類似性	Belongs to the FKBP-type PPlase family. FKBP1 subfamily. Contains 1 PPlase FKBP-type domain.
細胞内局在	Cytoplasm.

## 画像



15% SDS-PAGE showing ab85840 at approximately 14.1kDa (3μg).

**Please note:** All products are "FOR RESEARCH USE ONLY. NOT FOR USE IN DIAGNOSTIC PROCEDURES"

## Our Abpromise to you: Quality guaranteed and expert technical support

- Replacement or refund for products not performing as stated on the datasheet
- Valid for 12 months from date of delivery
- Response to your inquiry within 24 hours
- We provide support in Chinese, English, French, German, Japanese and Spanish
- Extensive multi-media technical resources to help you
- We investigate all quality concerns to ensure our products perform to the highest standards

If the product does not perform as described on this datasheet, we will offer a refund or replacement. For full details of the Abpromise, please visit <https://www.abcam.co.jp/abpromise> or contact our technical team.

## Terms and conditions

- Guarantee only valid for products bought direct from Abcam or one of our authorized distributors