

Recombinant human Fibroblast activation protein, alpha ab79623

画像数 2

製品の詳細

製品名	Recombinant human Fibroblast activation protein, alpha
生理活性	Specific Activity: 10.2 pmol/min/μg. Assay Condition: 50 mM Tris-HCl (pH7.5), 10 mM MgCl ₂ , 1 mM MnCl ₂ , 5μM substrate (A-P-AMC), room temperature.
精製度	> 90 % SDS-PAGE. Affinity purified.
発現系	Baculovirus infected Sf9 cells
タンパク質長	Protein fragment
Animal free	No
由来	Recombinant
生物種	Human
領域	29 to 760
タグ	His tag C-Terminus

特性

Our **Abpromise guarantee** covers the use of **ab79623** in the following tested applications.

The application notes include recommended starting dilutions; optimal dilutions/concentrations should be determined by the end user.

アプリケーション	SDS-PAGE Functional Studies
製品の状態	Liquid

前処理および保存

保存方法および安定性	Shipped on Dry Ice. Upon delivery aliquot. Store at -80°C. Avoid freeze / thaw cycle. pH: 8.00 Preservative: 1.36% Imidazole Constituents: 0.64% Tris HCl, 20% Glycerol (glycerin, glycerine), 0.64% Sodium chloride, 0.02% Potassium chloride This product is an active protein and may elicit a biological response in vivo, handle with caution.
------------	-----------------------------------------------------------------------------------------------------------------------------------------------------------------------------------------------------------------------------------------------------------------------------------------------------------------------------------------------------------------

関連情報

機能	In association with DPP4 is involved in the pericellular proteolysis of the extracellular matrix (ECM), the migration and invasion of endothelial cells into the ECM. May have a role in tissue remodeling during development and wound healing, and may contribute to invasiveness in malignant cancers.
組織特異性	Fibroblast specific.
配列類似性	Belongs to the peptidase S9B family.
翻訳後修飾	N-glycosylated. The N-terminus may be blocked.
細胞内局在	Cell membrane. Cell projection > lamellipodium membrane. Cell projection > invadopodium membrane. Found in cell surface lamellipodia, invadopodia and on shed vesicles. Colocalized with DPP4 in invadopodia and lamellipodia of migratory activated endothelial cells in collagenous matrix. Colocalized with DPP4 on endothelial cells of capillary-like microvessels but not large vessels within invasive breast ductal carcinoma.

画像

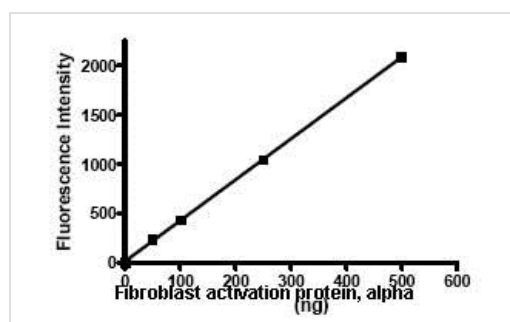
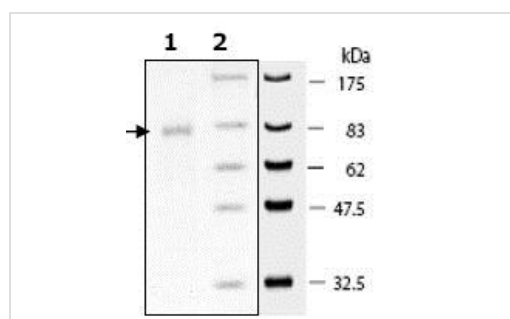


Image showing specific activity of ab79623.

Functional Studies - Recombinant human Fibroblast activation protein, alpha (ab79623)



SDS-PAGE showing 3ug ab79623 at approximately 85.5kDa.

SDS-PAGE - Recombinant human Fibroblast activation protein, alpha (ab79623)

Please note: All products are "FOR RESEARCH USE ONLY. NOT FOR USE IN DIAGNOSTIC PROCEDURES"

Our Abpromise to you: Quality guaranteed and expert technical support

- Replacement or refund for products not performing as stated on the datasheet
- Valid for 12 months from date of delivery
- Response to your inquiry within 24 hours

- We provide support in Chinese, English, French, German, Japanese and Spanish
- Extensive multi-media technical resources to help you
- We investigate all quality concerns to ensure our products perform to the highest standards

If the product does not perform as described on this datasheet, we will offer a refund or replacement. For full details of the Abpromise, please visit <https://www.abcam.co.jp/abpromise> or contact our technical team.

Terms and conditions

- Guarantee only valid for products bought direct from Abcam or one of our authorized distributors