

Recombinant human FBP1 protein (Active) ab208306

画像数 1

製品の詳細

製品名	Recombinant human FBP1 protein (Active)		
生理活性	Specific activity is > 7,000 pmol/min/μg obtained by measuring the increase of NADPH in absorbance at 340 nm resulting from the reduction of NADP. One unit will oxidize 1.0 pmole of fructose 1,6 diphosphate to fructose 6-phosphate and inorganic phosphate per minute at pH 9.5 at 37°C.		
精製度	> 90 % SDS-PAGE. ab208306 was purified by conventional chromatography techniques		
発現系	Escherichia coli		
アクセッション番号	<u>P09467</u>		
タンパク質長	Full length protein		
Animal free	No		
由来	Recombinant		
生物種	Human		
配列	MGSSHHHHHH SSGLVPRGSH MADQAPFDTD VNTLTRFVME EGRKARGTGE LTQLLNSLCT AVKAISSAVR KAGIAHLYGI AGSTNVTGDQ VKKLDVLSND LVMNMLKSSF ATCVLVSEED KHAIIVEPEK RGKYVVC FDP LDGSSNIDCL VSVG TIFGIY RKKSTDEPSE KDALQPGRNL VAAGYALYGS ATMLVLAMDC GVNCFMLDPA IGEFILVDKD VKIKKKGKIY SLNEGYARDF DPAVTEYIQR KKFPPDNSAP YGARYVGSMV ADVHRTL VYG GIFLYPANKK SPNGKLRLLY ECNPMAYVME KAGGMATTGK EAVLDVIPTD IHQRAPVILG SPDDVLEFLK VYEKHS AQ		
予測される分子量	39 kDa including tags		
領域	1 to 338		
タグ	His tag N-Terminus		
配列の追加情報	NP_000498		

特性

Our **Abpromise guarantee** covers the use of **ab208306** in the following tested applications.

The application notes include recommended starting dilutions; optimal dilutions/concentrations should be determined by the end user.

アプリケーション	Mass Spectrometry
	SDS-PAGE
	Functional Studies
質量分析	MALDI-TOF
製品の状態	Liquid

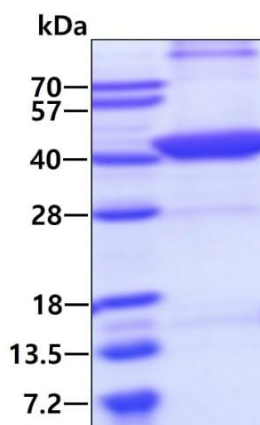
前処理および保存

保存方法および安定性	Shipped at 4°C. Store at +4°C short term (1-2 weeks). Upon delivery aliquot. Store at -20°C or -80°C. Avoid freeze / thaw cycle.
	pH: 8.00
	Constituents: 0.32% Tris HCl, 20% Glycerol (glycerin, glycerine), 0.58% Sodium chloride
	This product is an active protein and may elicit a biological response in vivo, handle with caution.

関連情報

パスウェイ	Carbohydrate biosynthesis; gluconeogenesis.
関連疾患	Defects in FBP1 are the cause of fructose-1,6-bisphosphatase deficiency (FBPD) [MIM:229700]. FBPD is inherited as an autosomal recessive disorder mainly in the liver and causes life-threatening episodes of hypoglycemia and metabolic acidosis (lactacidemia) in newborn infants or young children.
配列類似性	Belongs to the FBPase class 1 family.

画像



3ug by SDS-PAGE under reducing conditions and visualized by coomassie blue stain.

SDS-PAGE - Recombinant human FBP1 protein
(Active) (ab208306)

Our Abpromise to you: Quality guaranteed and expert technical support

- Replacement or refund for products not performing as stated on the datasheet
- Valid for 12 months from date of delivery
- Response to your inquiry within 24 hours

- We provide support in Chinese, English, French, German, Japanese and Spanish
- Extensive multi-media technical resources to help you
- We investigate all quality concerns to ensure our products perform to the highest standards

If the product does not perform as described on this datasheet, we will offer a refund or replacement. For full details of the Abpromise, please visit <https://www.abcam.co.jp/abpromise> or contact our technical team.

Terms and conditions

- Guarantee only valid for products bought direct from Abcam or one of our authorized distributors