

Recombinant Human Extracellular matrix protein 1 ab152353

画像数 1

製品の詳細

製品名	Recombinant Human Extracellular matrix protein 1
発現系	Wheat germ
アクセッション番号	Q16610
タンパク質長	Full length protein
Animal free	No
由来	Recombinant
生物種	Human
配列	<pre>MGTTARAALVLTYLAVASAAASEGGFTATGQRQLRPEHFQEVG YAAPPSP LSRSLPMDHPDSSQHGGPFEGQSQVQPPPSQEATPLQKEKLL PAQLPAEK EVGPPLPQEAVPLQKELPSLQHPNEQKEGMPAPFGDQSHPEP ESWNAAQH CQQDRSQGGWGHRLDGFPPGRPSDNLNQICLPNRQHVVYGP WNLQSSY SHLTRQGETLNFLEIGYSRCCHCRSHTNRLECAKLVWEEAMS RFCEAEFS VKTRPHWCCTRQGEARFSCFQEEAPQPHYQLRACPSHQPDIS SGLELPFP PGVPTLDNIKNICHLRFRSVPRNLPATDPLQRELLALIQL REFQRCCR QGNNHTCTWKAWEDTLDKYCDREYAVKTHHHLCCRHPSPTR DECFARRA PYPNYDRDILTIDISRATPNLMGHLCGNQRVLTKKHKHIPGLI HNMTARCC DLPFPEQACCAEEEEKLTFINDLGPRRNIWRDPALCCYLSPG DEQVNCFN INYLRNVALVSGDTENAKGQGEQGSTGGTNISSTSEPKEK</pre>
予測される分子量	85 kDa including tags
領域	1 to 540
タグ	GST tag N-Terminus

特性

Our **Abpromise guarantee** covers the use of **ab152353** in the following tested applications.

The application notes include recommended starting dilutions; optimal dilutions/concentrations should be determined by the end user.

アプリケーション
ELISA
Western blot
SDS-PAGE

製品の状態
Liquid
備考

前処理および保存

保存方法および安定性
Shipped on dry ice. Upon delivery aliquot and store at -80°C. Avoid freeze / thaw cycles.
pH: 8.00
Constituents: 0.31% Glutathione, 0.79% Tris HCl

関連情報

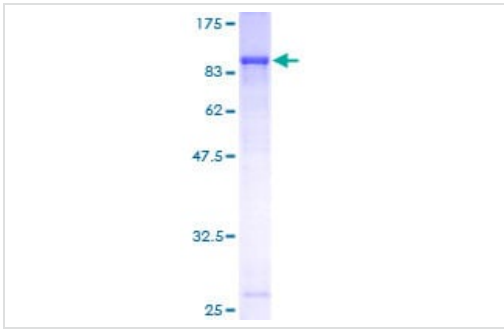
機能
Involved in endochondral bone formation as negative regulator of bone mineralization. Stimulates the proliferation of endothelial cells and promotes angiogenesis. Inhibits MMP9 proteolytic activity.

組織特異性
Expressed in breast cancer tissues. Little or no expression observed in normal breast tissues. Expressed in skin; wide expression is observed throughout the dermis with minimal expression in the epidermis.

関連疾患
Defects in ECM1 are the cause of lipoid proteinosis (LiP) [MIM:247100]; also known as lipoid proteinosis of Urbach and Wiethe or hyalinosis cutis et mucosae. LiP is a rare autosomal recessive disorder characterized by generalized thickening of skin, mucosae and certain viscera. Classical features include beaded eyelid papules and laryngeal infiltration leading to hoarseness. Histologically, there is widespread deposition of hyaline material and disruption/reduplication of basement membrane.

細胞内局在
Secreted > extracellular space > extracellular matrix.

画像



12.5% SDS-PAGE analysis of ab152353 stained with Coomassie Blue.

Western blot - Recombinant Human Extracellular matrix protein 1 (ab152353)

Please note: All products are "FOR RESEARCH USE ONLY. NOT FOR USE IN DIAGNOSTIC PROCEDURES"

Our Abpromise to you: Quality guaranteed and expert technical support

- Replacement or refund for products not performing as stated on the datasheet
- Valid for 12 months from date of delivery
- Response to your inquiry within 24 hours
- We provide support in Chinese, English, French, German, Japanese and Spanish
- Extensive multi-media technical resources to help you
- We investigate all quality concerns to ensure our products perform to the highest standards

If the product does not perform as described on this datasheet, we will offer a refund or replacement. For full details of the Abpromise, please visit <https://www.abcam.co.jp/abpromise> or contact our technical team.

Terms and conditions

- Guarantee only valid for products bought direct from Abcam or one of our authorized distributors