

# Recombinant human ERK1 protein ab116536

[2 References](#) [画像数 1](#)

### 製品の詳細

製品名	Recombinant human ERK1 protein
生理活性	Specific activity: 379.25 units/ml; 621.73 Units/mg
精製度	> 80 % Proprietary Purification.
エンドトキシン・レベル	< 1.000 Eu/μg
発現系	Escherichia coli
アクセッション番号	<b><u>P27361</u></b>
タンパク質長	Full length protein
Animal free	No
由来	Recombinant
生物種	Human
配列	MSPILGYWIKIKGLVQPTRLLLEYLEEKYEHLERDEGDKWR NKKFELGL EFPNLPYYIDGDVKLTQSMAIIRYIADKHMLGGCPKERAET SMLEGAVL DIRYGVSR IAYS KDFETLKVDFLSKLPEMLKMFEDRLCHKTY LNGDHVTH PDFMLYDALDVVLYMDPMCLDAFPKLVCFKKRIEAI PQIDKY LKSSKYIA WPLQGWQATFGGGDHPPKSDLEVL FQGPLGSAAAAAQGGGGG EPRRTEGV GPGVPGEVEMVKGQPFVGVPRYTQLQYIGEGAYGMVSSAYDH VRKTRVAI KKISPFHQTYCQRTLREIQILLRFRHENVIGIRDILRASTL EAMRDVYI VQDLMETDLYKLLKSQQLSNDHICYFLYQILRGLKYIHSANV LHRDLKPS NLLSNTTCDLKICDFGLARIADPEHDHTGFLTEYVATR WYRA PEIMLNSK GYTKSIDIWSVGCILAEMLSNRPIFP GKHYLDQLNHILGILG SPSQEDLN CIINMKARNYLQSLPSKTKVAWAKLFPKSDSKALDLLDRMLT FNPNKRIT

VEEALAHPLYLEQYYDPTDEPVAEEPFTFAMELDDLPKERLKE  
LIFQETAR FQPGVLEAP

予測される分子量 70 kDa including tags  
領域 2 to 379

## 特性

---

Our **Abpromise guarantee** covers the use of **ab116536** in the following tested applications.

The application notes include recommended starting dilutions; optimal dilutions/concentrations should be determined by the end user.

アプリケーション	SDS-PAGE Functional Studies Mass Spectrometry
質量分析	MALDI-TOF-TOF
製品の状態	Liquid
備考	ab116536 was alkylated, digested with trypsin and the mass of the resultant peptides determined by MADLI-TOF/TOF. The peptides obtained gave 27% sequence coverage of ERK1. Theoretical pI: 6.06

## 前処理および保存

---

保存方法および安定性 Shipped on Dry Ice. Upon delivery aliquot. Store at -80°C. Avoid freeze / thaw cycle.  
pH: 7.50  
Constituents: 0.002% Brij, 0.012% Benzamidine, 0.003% EGTA, 0.003% PMSF, 0.1% Beta mercaptoethanol, 0.79% Tris HCl, 9.24% Sucrose, 0.88% Sodium chloride  
This product is an active protein and may elicit a biological response in vivo, handle with caution.

## 関連情報

---

機能 Involved in both the initiation and regulation of meiosis, mitosis, and postmitotic functions in differentiated cells by phosphorylating a number of transcription factors such as ELK-1. Phosphorylates EIF4EBP1; required for initiation of translation. Phosphorylates microtubule-associated protein 2 (MAP2). Phosphorylates SPZ1 (By similarity). Phosphorylates heat shock factor protein 4 (HSF4).

配列類似性 Belongs to the protein kinase superfamily. CMGC Ser/Thr protein kinase family. MAP kinase subfamily.  
Contains 1 protein kinase domain.

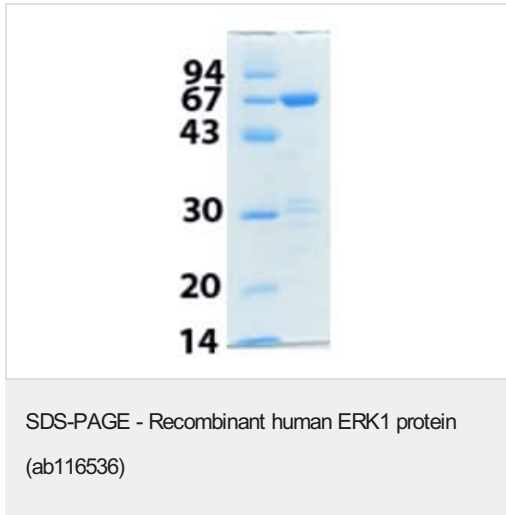
ドメイン The TXY motif contains the threonine and tyrosine residues whose phosphorylation activates the MAP kinases.

翻訳後修飾 Dually phosphorylated on Thr-202 and Tyr-204, which activates the enzyme. Dephosphorylated by PTPRJ at Tyr-204.

---

## 画像

---



12% SDS-PAGE gel showing ab116536.

**Please note:** All products are "FOR RESEARCH USE ONLY. NOT FOR USE IN DIAGNOSTIC PROCEDURES"

### Our Abpromise to you: Quality guaranteed and expert technical support

---

- Replacement or refund for products not performing as stated on the datasheet
- Valid for 12 months from date of delivery
- Response to your inquiry within 24 hours
- We provide support in Chinese, English, French, German, Japanese and Spanish
- Extensive multi-media technical resources to help you
- We investigate all quality concerns to ensure our products perform to the highest standards

If the product does not perform as described on this datasheet, we will offer a refund or replacement. For full details of the Abpromise, please visit <https://www.abcam.co.jp/abpromise> or contact our technical team.

### Terms and conditions

---

- Guarantee only valid for products bought direct from Abcam or one of our authorized distributors