

### Recombinant human ErbB2 / HER2 protein (Active) ab269979

画像数 2

#### 製品の詳細

製品名	Recombinant human ErbB2 / HER2 protein (Active)
生理活性	Activity $\geq 40$ pmole/min/ $\mu$ g. Assay was done in Kinase buffer containing 2 mM DTT using Poly- (Glu:Tyr) substrate (0.2 mg/ml) and 20 $\mu$ M ATP. Reaction was done at 30°C for 45 min.
精製度	$\geq 43$ % SDS-PAGE. Affinity purified.
発現系	Sf9 cells
アクセッション番号	<b>P04626</b>
タンパク質長	Protein fragment
Animal free	No
由来	Recombinant
生物種	Human

配列	QQKIRKYTMRRLLQETELVEPLTPSGAMPNQAQMRILKETEL RKVKVLGS GAFGTVYKGIWIPDGENVKIPVAIKVLRENTSPKANKEILDE AYVMAGVG SPYVSRLLGICLTSTVQLVTQLMPYGCLLDHVRENRRGLGSQ DLLNWCMQ IAKGMSYLEDVRLVHRDLAARNVLVKSPNHVKITDFGLARLL DIDETEYH ADGGKVPKWMALLESILRRRFTHQSDVWSYGVTVWELMTFGA KPYDGIPA REIPDLLEKGERLPQPPICTIDVYMIMVKCWMIDSECRPRFR ELVSEFSR MARDPQRFVVIQNE DLGPASPLDSTFYRSLLEDDDMGDLVDA EEYLVPPQ GFFCPDPAPGAGGMVHHRHRSSTRSGGGDLTLGLEPSEEEA PRSPLAPS EGAGSDVFDGDLGMGAAGLQSLPTHDPSPQLQRYSEDPTVPL PSETDGYV APLTCSPQPEYVNQPDVVRPQPPSPREGPLPAARPAGATLERP KTLSPGKN GVVKDVFAFGGAVENPEYLTPQGAAPQPHPPPAFSPAFDNL
----	--

予測される分子量	89 kDa including tags
領域	679 to 1255
タグ	GST tag N-Terminus
配列の追加情報	NM_004448

## 特性

---

Our **Abpromise guarantee** covers the use of **ab269979** in the following tested applications.

The application notes include recommended starting dilutions; optimal dilutions/concentrations should be determined by the end user.

アプリケーション	Functional Studies SDS-PAGE
製品の状態	Liquid

## 前処理および保存

---

保存方法および安定性	Shipped on Dry Ice. Store at -80°C. Avoid freeze / thaw cycle. pH: 8.00 Constituents: 0.63% Tris HCl, 0.64% Sodium chloride, 0.02% Potassium chloride, 20% Glycerol (glycerin, glycerine), 0.61% Glutathione, 0.05% (R*,R*)-1,4-Dimercaptobutan-2,3-diol This product is an active protein and may elicit a biological response in vivo, handle with caution.
------------	--

## 関連情報

---

機能	Protein tyrosine kinase that is part of several cell surface receptor complexes, but that apparently needs a coreceptor for ligand binding. Essential component of a neuregulin-receptor complex, although neuregulins do not interact with it alone. GP30 is a potential ligand for this receptor. Regulates outgrowth and stabilization of peripheral microtubules (MTs). Upon ERBB2 activation, the MEMO1-RHOA-DIAPH1 signaling pathway elicits the phosphorylation and thus the inhibition of GSK3B at cell membrane. This prevents the phosphorylation of APC and CLASP2, allowing its association with the cell membrane. In turn, membrane-bound APC allows the localization of MACF1 to the cell membrane, which is required for microtubule capture and stabilization. In the nucleus is involved in transcriptional regulation. Associates with the 5'-TCAAATTC-3' sequence in the PTGS2/COX-2 promoter and activates its transcription. Implicated in transcriptional activation of CDKN1A; the function involves STAT3 and SRC. Involved in the transcription of rRNA genes by RNA Pol I and enhances protein synthesis and cell growth.
組織特異性	Expressed in a variety of tumor tissues including primary breast tumors and tumors from small bowel, esophagus, kidney and mouth.
関連疾患	Hereditary diffuse gastric cancer Glioma Ovarian cancer Lung cancer Gastric cancer Chromosomal aberrations involving ERBB2 may be a cause gastric cancer. Deletions within 17q12 region producing fusion transcripts with CDK12, leading to CDK12-ERBB2 fusion leading to truncated CDK12 protein not in-frame with ERBB2.

### 配列類似性

Belongs to the protein kinase superfamily. Tyr protein kinase family. EGF receptor subfamily. Contains 1 protein kinase domain.

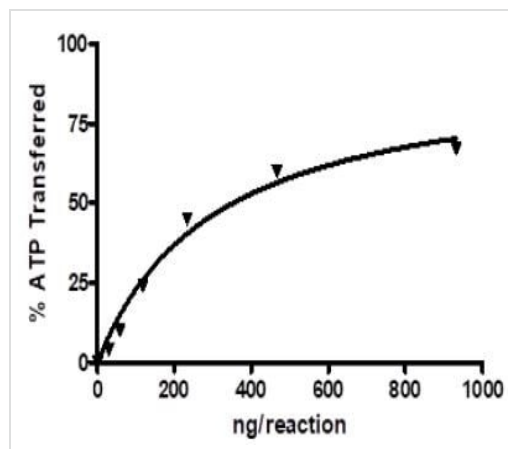
### 翻訳後修飾

Autophosphorylated. Autophosphorylation occurs in trans, i.e. one subunit of the dimeric receptor phosphorylates tyrosine residues on the other subunit (Probable). Ligand-binding increases phosphorylation on tyrosine residues (PubMed:27134172). Signaling via SEMA4C promotes phosphorylation at Tyr-1248 (PubMed:17554007). Dephosphorylated by PTPN12 (PubMed:27134172).

### 細胞内局在

Cytoplasm. Nucleus and Cell membrane. Cytoplasm, perinuclear region. Nucleus. Translocation to the nucleus requires endocytosis, probably endosomal sorting and is mediated by importin beta-1/KPNB1.

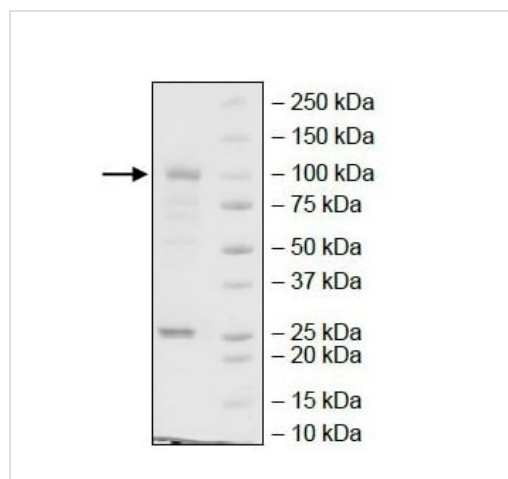
### 画像



Activity  $\geq 40$  pmole/min/ $\mu$ g.

Assay was performed in Kinase buffer containing 2 mM DTT using Poly- (Glu:Tyr) substrate (0.2 mg/ml) and 20  $\mu$ M ATP. Reaction was done at 30°C for 45 min.

Functional Studies - Recombinant human ErbB2 / HER2 protein (Active) (ab269979)



SDS-PAGE analysis of ab269979 (2  $\mu$ g) on a 4-20% gel with Coomassie staining.

SDS-PAGE - Recombinant human ErbB2 / HER2 protein (Active) (ab269979)

**Please note:** All products are "FOR RESEARCH USE ONLY. NOT FOR USE IN DIAGNOSTIC PROCEDURES"

## **Our Abpromise to you: Quality guaranteed and expert technical support**

---

- Replacement or refund for products not performing as stated on the datasheet
- Valid for 12 months from date of delivery
- Response to your inquiry within 24 hours
  
- We provide support in Chinese, English, French, German, Japanese and Spanish
- Extensive multi-media technical resources to help you
- We investigate all quality concerns to ensure our products perform to the highest standards

If the product does not perform as described on this datasheet, we will offer a refund or replacement. For full details of the Abpromise, please visit <https://www.abcam.co.jp/abpromise> or contact our technical team.

## **Terms and conditions**

---

- Guarantee only valid for products bought direct from Abcam or one of our authorized distributors