

# Recombinant Human Epoxide hydrolase protein ab114694

画像数 1

### 製品の詳細

---

|             |  |
|-------------|--|
| 製品名         | Recombinant Human Epoxide hydrolase protein  |
| 発現系         | Wheat germ   |
| アクセッション番号   | <b>P07099</b>  |
| タンパク質長      | Full length protein  |
| Animal free | No   |
| 由来          | Recombinant  |
| 生物種         | Human  |
| 配列          | MWLEILLTSVLGFAIYWFISRDKETLPLEDGWWGPGTRSAA<br>REDDSIRP<br>FKVETSDEEIHDLHQRIDKFRFTPPLEDSCFHYGFNSNYLKK<br>VISYWRNE<br>FDWKKQVEILNRYPHFKTKIEGLDIHFIVKPPQLPAGHTPK<br>PLLMVHWG<br>PGSFYEFYKIIPLLTDPKNHGLSDEHVFEVICPSIPGYGFSE<br>ASSKKGFN<br>SVATARIFYKLMRLRGFQEFYIQGGDWGSLICTNMAQLVPSH<br>VKGLHLNM<br>ALVLSNFSTLTLLLGQRFGRFLGLTERDVELLYPVKEKVFYS<br>LMRESGYM<br>HIQCTKPDTVGSALNDSPVGLAAYILEKFSTWTNTEFRYLED<br>GGLERKFS<br>LDDLLTNVMLYWTGTIISSQRFYKENLGQGWMTQKHERMKV<br>YVPTGFSA<br>FPFELLHTPEKWVRFKYPKLISYSYVMVRGGHFAAFEEPELLA<br>QDIRKFLS VLERQ |
| 予測される分子量    | 76 kDa including tags  |
| 領域          | 1 to 455   |
| タグ          | GST tag N-Terminus   |

### 特性

---

Our **Abpromise guarantee** covers the use of **ab114694** in the following tested applications.

The application notes include recommended starting dilutions; optimal dilutions/concentrations should be determined by the end user.

|          |                                   |
|----------|-----------------------------------|
| アプリケーション | ELISA<br>SDS-PAGE<br>Western blot |
| 製品の状態    | Liquid                            |

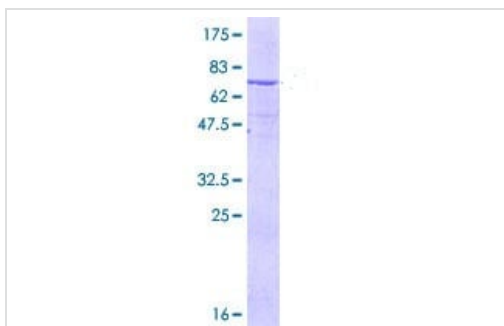
#### 前処理および保存

|            |   |
|------------|---|
| 保存方法および安定性 | Shipped on dry ice. Upon delivery aliquot and store at -80°C. Avoid freeze / thaw cycles.<br>pH: 8.00<br>Constituents: 0.3% Glutathione, 0.79% Tris HCl |
|------------|---|

#### 関連情報

|       |   |
|-------|---|
| 機能    | Biotransformation enzyme that catalyzes the hydrolysis of arene and aliphatic epoxides to less reactive and more water soluble dihydrodiols by the trans addition of water.   |
| 組織特異性 | Found in liver.   |
| 関連疾患  | Note=In some populations, the high activity haplotype tyr113/his139 is overrepresented among women suffering from pregnancy-induced hypertension (pre-eclampsia) when compared with healthy controls.<br>Defects in EPHX1 are a cause of familial hypercholanemia (FHCA) [MIM:607748]. FHCA is a disorder characterized by elevated serum bile acid concentrations, itching, and fat malabsorption. |
| 配列類似性 | Belongs to the peptidase S33 family.  |
| 細胞内局在 | Microsome membrane. Endoplasmic reticulum membrane.   |

#### 画像



12.5% SDS-PAGE showing ab114694 at approximately 76.12 kDa stained with Coomassie Blue.

SDS-PAGE - Recombinant Human Epoxide hydrolase protein (ab114694)

**Please note:** All products are "FOR RESEARCH USE ONLY. NOT FOR USE IN DIAGNOSTIC PROCEDURES"

#### Our Abpromise to you: Quality guaranteed and expert technical support

- Replacement or refund for products not performing as stated on the datasheet

- Valid for 12 months from date of delivery
- Response to your inquiry within 24 hours
  
- We provide support in Chinese, English, French, German, Japanese and Spanish
- Extensive multi-media technical resources to help you
- We investigate all quality concerns to ensure our products perform to the highest standards

If the product does not perform as described on this datasheet, we will offer a refund or replacement. For full details of the Abpromise, please visit <https://www.abcam.co.jp/abpromise> or contact our technical team.

### **Terms and conditions**

---

- Guarantee only valid for products bought direct from Abcam or one of our authorized distributors