

Recombinant Human Ephrin B2 protein ab113609

画像数 1

製品の詳細

製品名	Recombinant Human Ephrin B2 protein
精製度	> 85 % SDS-PAGE. ab113609 was purified to > 85% by conventional chromatography, after refolding of the isolated inclusion bodies in a renaturation buffer.
発現系	Escherichia coli
アクセッション番号	<u>P52799</u>
タンパク質長	Protein fragment
Animal free	No
由来	Recombinant
生物種	Human
配列	MGSSHHHHHHSSGLVPRGSHMGSHMIVLEPIYWNSSNSKFLP GQGLVLYP QIGDKLDIICPKVDSKTVGQYEYYKVYMDKDQADRCTIKKE NTPLLNCA KPDQDIKFTIKFQEFSPNLWGLEFQKNKDYIISTSNLSLEG LDNQEGGV CQTRAMKILMKVGQDASSAGSTRNKDPTRRPELEAGTNGRSS TTSPFVKP NPGSSTDGNSAGHSGNNILGSEVALFA
予測される分子量	25 kDa including tags
領域	28 to 229
タグ	His tag N-Terminus

特性

Our **Abpromise guarantee** covers the use of **ab113609** in the following tested applications.

The application notes include recommended starting dilutions; optimal dilutions/concentrations should be determined by the end user.

アプリケーション	Mass Spectrometry
	SDS-PAGE
質量分析	MALDI-TOF
製品の状態	Liquid

前処理および保存

保存方法および安定性

Shipped at 4°C. Store at +4°C short term (1-2 weeks). Upon delivery aliquot. Store at -20°C or -80°C. Avoid freeze / thaw cycle.

pH: 8.00

Constituents: 0.03% DTT, 0.32% Tris HCl, 20% Glycerol (glycerin, glycerine), 1.17% Sodium chloride

関連情報

機能

Cell surface transmembrane ligand for Eph receptors, a family of receptor tyrosine kinases which are crucial for migration, repulsion and adhesion during neuronal, vascular and epithelial development. Binds promiscuously Eph receptors residing on adjacent cells, leading to contact-dependent bidirectional signaling into neighboring cells. The signaling pathway downstream of the receptor is referred to as forward signaling while the signaling pathway downstream of the ephrin ligand is referred to as reverse signaling. Binds to receptor tyrosine kinase including EPHA4, EPHA3 and EPHB4. Together with EPHB4 plays a central role in heart morphogenesis and angiogenesis through regulation of cell adhesion and cell migration. EPHB4-mediated forward signaling controls cellular repulsion and segregation from EFNB2-expressing cells. May play a role in constraining the orientation of longitudinally projecting axons.
(Microbial infection) Acts as a receptor for Hendra virus and Nipah virus.

組織特異性

Lung and kidney.

配列類似性

Belongs to the ephrin family.

Contains 1 ephrin RBD (ephrin receptor-binding) domain.

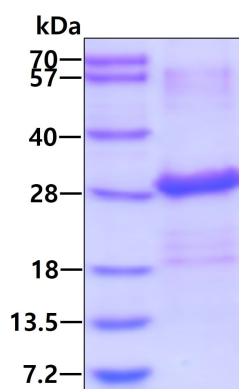
翻訳後修飾

Inducible phosphorylation of tyrosine residues in the cytoplasmic domain.

細胞内局在

Membrane.

画像



SDS-PAGE analysis of Recombinant Human Ephrin B2 protein (ab113609), under reducing conditions. Proteins visualized by coomassie blue stain.

Lane 1: Molecular Weight Standards

Lane 2: 3 µg Recombinant Human Ephrin B2 protein

SDS-PAGE - Recombinant Human Ephrin B2 protein (ab113609)

Our Abpromise to you: Quality guaranteed and expert technical support

- Replacement or refund for products not performing as stated on the datasheet
- Valid for 12 months from date of delivery
- Response to your inquiry within 24 hours

- We provide support in Chinese, English, French, German, Japanese and Spanish
- Extensive multi-media technical resources to help you
- We investigate all quality concerns to ensure our products perform to the highest standards

If the product does not perform as described on this datasheet, we will offer a refund or replacement. For full details of the Abpromise, please visit <https://www.abcam.co.jp/abpromise> or contact our technical team.

Terms and conditions

- Guarantee only valid for products bought direct from Abcam or one of our authorized distributors