

Recombinant Human ENSA protein ab92932

2 References 画像数 1

製品の詳細

製品名	Recombinant Human ENSA protein
精製度	> 90 % SDS-PAGE. ab92932 is purified using conventional chromatography techniques.
発現系	Escherichia coli
タンパク質長	Full length protein
Animal free	No
由来	Recombinant
生物種	Human
配列	MGSSHHHHHH SSGLVPRGSH MSQKQEEENP AEETGEEKQD TQEKEGILPE RAEEAKLKAK YPSLGQKPGG SDFLMKRLQK GQKYFDSGDY NMAKAKMKNK QLPSAGPDKN LVTGDHIPTP QDLPQRKSSL VTSKLAGGQV E

特性

Our **Abpromise guarantee** covers the use of **ab92932** in the following tested applications.

The application notes include recommended starting dilutions; optimal dilutions/concentrations should be determined by the end user.

アプリケーション	SDS-PAGE
製品の状態	Liquid

前処理および保存

保存方法および安定性	Shipped at 4°C. Upon delivery aliquot and store at -20°C or -80°C. Avoid repeated freeze / thaw cycles. pH: 8.00 Constituents: 0.0154% DTT, 0.316% Tris HCl, 10% Glycerol
------------	---

関連情報

機能	Protein phosphatase inhibitor that specifically inhibits protein phosphatase 2A (PP2A) during
----	---

mitosis. When phosphorylated at Ser-67 during mitosis, specifically interacts with PPP2R2D (PR55-delta) and inhibits its activity, leading to inactivation of PP2A, an essential condition to keep cyclin-B1-CDK1 activity high during M phase (By similarity). Also acts as a stimulator of insulin secretion by interacting with sulfonyleurea receptor (ABCC8), thereby preventing sulfonyleurea from binding to its receptor and reducing K(ATP) channel currents.

組織特異性

Widely expressed with high levels in skeletal muscle and brain and lower levels in the pancreas.

配列類似性

Belongs to the endosulfine family.

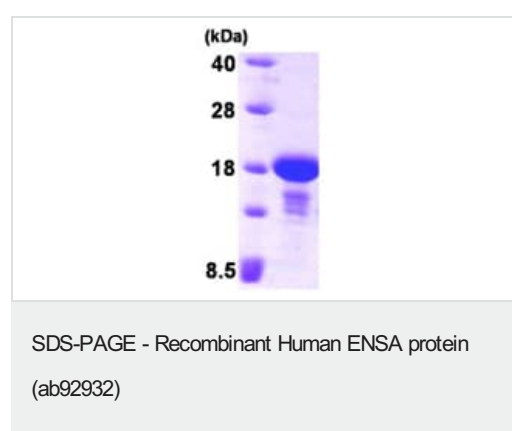
翻訳後修飾

Phosphorylation at Ser-67 by GWL during mitosis is essential for interaction with PPP2R2D (PR55-delta) and subsequent inactivation of PP2A (By similarity). Phosphorylated by PKA.

細胞内局在

Cytoplasm.

画像



ab92932 staining ENSA protein on a 15% SDS-PAGE (3 µg)

Please note: All products are "FOR RESEARCH USE ONLY. NOT FOR USE IN DIAGNOSTIC PROCEDURES"

Our Abpromise to you: Quality guaranteed and expert technical support

- Replacement or refund for products not performing as stated on the datasheet
- Valid for 12 months from date of delivery
- Response to your inquiry within 24 hours
- We provide support in Chinese, English, French, German, Japanese and Spanish
- Extensive multi-media technical resources to help you
- We investigate all quality concerns to ensure our products perform to the highest standards

If the product does not perform as described on this datasheet, we will offer a refund or replacement. For full details of the Abpromise, please visit <https://www.abcam.co.jp/abpromise> or contact our technical team.

Terms and conditions

- Guarantee only valid for products bought direct from Abcam or one of our authorized distributors