

### Recombinant human ENO1 protein (Active) ab89248

1 References [画像数 2](#)

#### 製品の詳細

製品名	Recombinant human ENO1 protein (Active)
生理活性	Specific activity is > 20,000pmol/min/ug.  Obtained by measuring the decrease of NAD in absorbance at 340nm resulting from NADH at pH 6.5 at 37C.
精製度	> 95 % SDS-PAGE. ab89248 is purified using conventional chromatography techniques.
エンドトキシン・レベル	< 1.000 Eu/μg
発現系	Escherichia coli
アクセッション番号	<b><u>P06733</u></b>
タンパク質長	Full length protein
Animal free	No
由来	Recombinant
生物種	Human
配列	<div> MSILKIHARE IFDSRGNPTV EVDLFTSKGL  FRAAVPSGAS TGIYEALELR DNDKTRYMGK  GVSKAVEHIN KTIAPALVSK KLVNTEQEKI  DKLMIEMDGT ENKSKFGANA ILGVSLAVCK  AGAVEKGVPL YRHIADLAGN SEVILPVPAF  NVIINGGSHAG NKLAMQEFMI LPVGAANFRE  AMRIGAEVYH NLKNVIKEY GKDATNVGDE  GGFAPNILEN KEGLELLKTA IGKAGYTDKV  VIGMDVAASE FFRSGKYDLD FKSPDDPSRY  ISPDQLADLY KSFIDYPPV SIEDPFDQDD  WGAWQKFTAS AGIQVVGDDL TVTNPKRIAK  AVNEKSCNCL LLKVNQIGSV TESLQACKLA  QANGWGMVS HRSGETEDTF IADLVVGLCT  GQIKTGAPCR SERLAKYNQL LRIEEELGSK  AKFAGRNFN PLAK </div>

予測される分子量	47 kDa
領域	1 to 434
配列の追加情報	NCBI: NP_001419

## 特性

---

Our **Abpromise guarantee** covers the use of **ab89248** in the following tested applications.

The application notes include recommended starting dilutions; optimal dilutions/concentrations should be determined by the end user.

### アプリケーション

Functional Studies

Western blot

SDS-PAGE

### 製品の状態

Liquid

### 備考

MW confirmed by MALDI-TOF.

Endotoxin level determined by LAL method.

## 前処理および保存

---

### 保存方法および安定性

Shipped at 4°C. Store at +4°C short term (1-2 weeks). Upon delivery aliquot. Store at -20°C or -80°C. Avoid freeze / thaw cycle.

pH: 7.50

Constituents: 0.316% Tris HCl, 10% Glycerol (glycerin, glycerine), 0.012% Magnesium sulphate

This product is an active protein and may elicit a biological response in vivo, handle with caution.

## 関連情報

---

### 機能

Multifunctional enzyme that, as well as its role in glycolysis, plays a part in various processes such as growth control, hypoxia tolerance and allergic responses. May also function in the intravascular and pericellular fibrinolytic system due to its ability to serve as a receptor and activator of plasminogen on the cell surface of several cell-types such as leukocytes and neurons. Stimulates immunoglobulin production.

MBP1 binds to the myc promoter and acts as a transcriptional repressor. May be a tumor suppressor.

### 組織特異性

The alpha/alpha homodimer is expressed in embryo and in most adult tissues. The alpha/beta heterodimer and the beta/beta homodimer are found in striated muscle, and the alpha/gamma heterodimer and the gamma/gamma homodimer in neurons.

### パスウェイ

Carbohydrate degradation; glycolysis; pyruvate from D-glyceraldehyde 3-phosphate: step 4/5.

### 配列類似性

Belongs to the enolase family.

### 発生段階

During ontogenesis, there is a transition from the alpha/alpha homodimer to the alpha/beta heterodimer in striated muscle cells, and to the alpha/gamma heterodimer in nerve cells.

### 翻訳後修飾

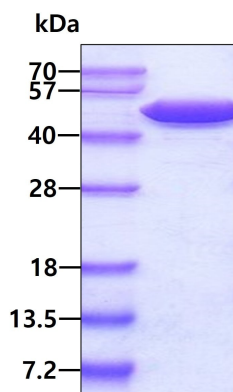
ISGylated.

### 細胞内局在

Nucleus and Cytoplasm. Cell membrane. Cytoplasm > myofibril > sarcomere > M line. Can translocate to the plasma membrane in either the homodimeric (alpha/alpha) or heterodimeric (alpha/gamma) form. ENO1 is localized to the M line.

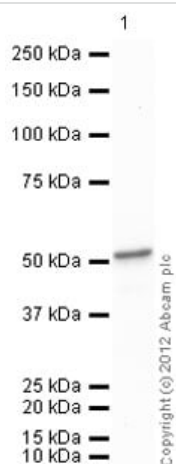
## 画像

---



SDS-PAGE - Recombinant human ENO1 protein  
(Active) (ab89248)

SDS-PAGE of ab89248 (3µg) under reducing condition and visualized by coomassie blue stain.



Western blot - Recombinant Human ENO1 protein  
(ab89248)

Anti-ENO1 antibody ([ab85086](#)) at 1/1000 dilution + Recombinant human ENO1 protein (Active) (ab89248) at 0.1 µg

#### Secondary

Goat Anti-Rabbit IgG H&L (HRP) preadsorbed ([ab97080](#)) at 1/5000 dilution

Developed using the ECL technique.

Performed under reducing conditions.

**Predicted band size:** 47 kDa

**Exposure time:** 30 seconds

**Please note:** All products are "FOR RESEARCH USE ONLY. NOT FOR USE IN DIAGNOSTIC PROCEDURES"

#### Our Abpromise to you: Quality guaranteed and expert technical support

- Replacement or refund for products not performing as stated on the datasheet
- Valid for 12 months from date of delivery
- Response to your inquiry within 24 hours
- We provide support in Chinese, English, French, German, Japanese and Spanish
- Extensive multi-media technical resources to help you
- We investigate all quality concerns to ensure our products perform to the highest standards

If the product does not perform as described on this datasheet, we will offer a refund or replacement. For full details of the Abpromise, please visit <https://www.abcam.co.jp/abpromise> or contact our technical team.

#### **Terms and conditions**

---

- Guarantee only valid for products bought direct from Abcam or one of our authorized distributors