

Recombinant Human EB3 protein ab101197

画像数 1

製品の詳細

製品名	Recombinant Human EB3 protein
精製度	> 90 % SDS-PAGE. ab101197 is purified using conventional chromatography techniques.
発現系	Escherichia coli
アクセッション番号	<u>Q9UPY8</u>
タンパク質長	Full length protein
Animal free	No
由来	Recombinant
生物種	Human
配列	<p> MGSSHHHHHH SSGLVPRGSH MAVNVYSTSV TSENLSRHDM LAWVNDLHL NYTKIEQLCS GAAYCQFMDM LFPGCVHLRK VKFQAKLEHE YIHNFKVLQA AFKKMGVDKI IPVEKLVKGK FQDNFEFIQW FKKFFDANYD GKDYNPLLAR QGQDVAPPPN PGDQIFNKSK KLIGTAVPQR TSPTGPKNMQ TSGRLSNVAP PCILRKNPPS ARNGGHETDA QILELNQQLV DLKLTVDGLE KERDFYFSKL RDIELICQEH ESENSPVISG IIGILYATEE GFAPPEDDEI EEHQEDQDE Y </p>
予測される分子量	34 kDa including tags
領域	1 to 281
タグ	His tag N-Terminus

特性

Our **Abpromise guarantee** covers the use of **ab101197** in the following tested applications.

The application notes include recommended starting dilutions; optimal dilutions/concentrations should be determined by the end user.

アプリケーション	Mass Spectrometry
	SDS-PAGE
質量分析	MALDI-TOF
製品の状態	Liquid

前処理および保存

保存方法および安定性

Shipped at 4°C. Store at +4°C short term (1-2 weeks). Upon delivery aliquot. Store at -20°C or -80°C. Avoid freeze / thaw cycle.

pH: 8.00

Constituents: 0.0308% DTT, 0.316% Tris HCl, 10% Glycerol (glycerin, glycerine), 0.58% Sodium chloride

関連情報

機能

May be involved in microtubule polymerization, and spindle function by stabilizing microtubules and anchoring them at centrosomes. May play a role in cell migration.

組織特異性

Predominantly expressed in brain and muscle.

配列類似性

Belongs to the MAPRE family.

Contains 1 CH (calponin-homology) domain.

Contains 1 EB1 C-terminal domain.

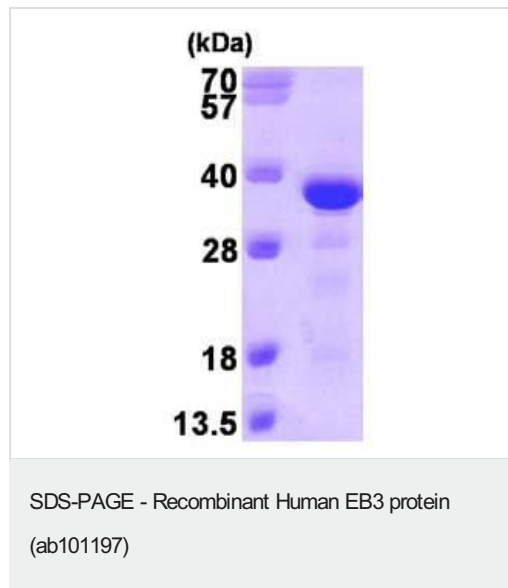
ドメイン

Composed of two functionally independent domains. The N-terminal domain forms an hydrophobic cleft involved in microtubule binding and the C-terminal is involved in the formation of mutually exclusive complexes with APC and DCTN1.

細胞内局在

Cytoplasm > cytoskeleton. Associated with the microtubule network.

画像



15% SDS-PAGE showing ab101197 at approximately 34.1kDa (3μg).

Please note: All products are "FOR RESEARCH USE ONLY. NOT FOR USE IN DIAGNOSTIC PROCEDURES"

Our Abpromise to you: Quality guaranteed and expert technical support

- Replacement or refund for products not performing as stated on the datasheet
- Valid for 12 months from date of delivery

- Response to your inquiry within 24 hours
- We provide support in Chinese, English, French, German, Japanese and Spanish
- Extensive multi-media technical resources to help you
- We investigate all quality concerns to ensure our products perform to the highest standards

If the product does not perform as described on this datasheet, we will offer a refund or replacement. For full details of the Abpromise, please visit <https://www.abcam.co.jp/abpromise> or contact our technical team.

Terms and conditions

- Guarantee only valid for products bought direct from Abcam or one of our authorized distributors